



The powerful preparation system
for high quality specimen preparation

- **Sturdy and durable design**
- **Intuitive user interface**
- **Easy cleaning with removable bowl liner and bowl flush**
- **Cover for improved safety**

Expect more from your preparation equipment

The Tegramin preparation system elegantly combines ease of use with advanced functionality. Innovative solutions improve preparation results and help you deal with a variety of specimens or materials, or high specimen volume.

**Tegramin in three
different disc sizes:**

Tegramin-30 / 300 mm

Tegramin-25 / 250 mm

Tegramin-20 / 200 mm

**PERFECT
PREPARATION RESULTS**

Superior design features for maximum preparation quality

All the features of Tegramin have been developed in close cooperation with experienced metallographers to make specimen preparation easier and more reliable.

Dual column construction

On the massive, cast aluminium base, a sturdy construction carrying the specimen mover head is fixed. The up/down movement is based on two strong columns making the entire systems as solid as possible. This has a very positive effect on specimen planeness and noise during preparation.

Precise force control

It is possible to grind and polish with a force as low as 5 N per specimen. This is used for small or sensitive specimens to avoid damage during preparation.

Automatic locking of specimen mover plates

After the specimen mover plate has been moved into the correct position over the preparation surface, the coupling is locked inside the specimen mover head. The possible small movements of the specimen mover plate are now avoided completely, and the result is a tremendous improvement in specimen planeness. On Tegramin-20 the specimen mover plate is locked in place with a single screw.

Soft start and stop

Both the start and stop sequence of a preparation step are controlled precisely. The force is increased and decreased gradually, and the speed of both preparation disc and specimen mover plate is ramped up and down at predefined "angles" to get the best possible preparation result without the risk of damaging the specimen because of preferential grinding.

Direction of preparation head

The rotational direction of the head can be set to either clockwise or to counter-clockwise. Normal preparation is always carried out using the counter-clockwise movement, i.e. same as the disc movement for the best possible dynamic relations. For special applications and for polishing with oxide polishing suspensions, the rotation is changed to clockwise to keep the suspension better on the disc.

Slow rotation while pre-dosing

When a preparation step is started, the first few seconds are normally used for pre-dosing. During this time the disc is turning slowly for a more equal distribution of the suspension or lubricant and to avoid the liquid to be thrown off the disc.

Removal measurement on specimen holders

A built-in removal sensor allows for the measurement of material removal in the range from 50 - 5,000 μm . Instead of relying on preparation time, especially when grinding various numbers of specimens, the necessary amount of material to be removed can be specified. This guarantees the shortest possible grinding time while ensuring that sufficient material has been removed.

Preparation of individual specimens and specimen holders

Tegramin-30 and -25 are designed for preparation of both individual specimens and specimens clamped in holders. Simply switch between the two possibilities and insert either a specimen holder or a specimen mover plate to run the required method. Thus all options are covered. Tegramin-20 is for preparation of individual specimens only.

Specimen mover head stopping again at start position

The specimen mover head is always stopping at the exact same position it was started at. This makes it easier to insert and remove the specimen holder or specimen mover disc as the release button always is in the same position. It also makes it easier to identify individual specimens as they start and stop exactly in the same position.



Easy insertion and removal of specimens

Tegramin is equipped with a specific key to rotate the specimen mover plate. One touch of the key rotates the plate 180° and facilitates insertion and removal of the specimens.



Advanced dosing functions for maximum reproducibility

As precise dosing of diamond suspension and lubricant are key to the perfect preparation result, special attention was paid to these functions.

Increase reproducibility

Automatic dosing of consumables ensures that a controlled amount is applied every time. This greatly increases reproducibility and keeps consumables consumption under control.

Different dosing modules available

Three different dosing modules are available for Tegramin: A module with one pump for DP-Suspension or lubricant, a module with two pumps for DP-Suspensions or lubricants, and one module with two pumps for DP-Suspensions or lubricants and one pump with water connection for OP-Suspensions. These modules can be combined in various ways, opening for many different combination possibilities and up to 7 pumps in total.



Manual preparation with automatic dosing and timer function

It is possible to select manual preparation. In this menu it is possible to display the preparation surface to be used and to program the lubricant and/or suspension to be used together with the dosing level and the preparation time. After pressing start, dosing will start automatically and the disc will stop as soon as the preset time has expired. This allows e.g. for a controlled, short manual polishing of specimens after etching.

Automatic level calculation

It can be difficult to see the level in all bottles when they are placed in the bottle tray. Tegramin has an automatic level calculation so when a lubricant or suspension is filled into a bottle, the volume that is in the bottle can be specified in the bottle configuration.

Calibration item	Calibration value
Dosing pump 1:	50.5 ml/min
Dosing pump 2:	53.0 ml/min
Dosing pump 3:	53.8 ml/min
Dosing pump 4:	52.4 ml/min
Dosing pump 5:	51.7 ml/min
Dosing pump 6:	53.0 ml/min
Dosing pump 7:	92.0 ml/min
Pump time:	60 s

Built-in pump calibration

Tegramin is equipped with a calibration function that ensures constant dosing levels throughout the entire lifetime of the machine. At regular intervals a calibration routine can be carried out, and the actual pump capacity is measured. After the measurement the individual pump values are entered into the software, and the correct dosing levels are calculated based on these values. Thus any method will always produce the same preparation result.

Sniff function when dosing DP-Suspensions and lubricants

At the end of every preparation step the pump(s) used during that step reverse slightly to retract the suspension or lubricant from the dosing nozzle. This eliminates the risk of contamination at a later step from coarse abrasive on a finer grain size step.

No.	Susp./Lu	INFORMATION	#44	Use	Select
1	DiaPro All.			Clean	Yes
2	DiaPro Lar	Cleaning of tubes started, fluids		Clean	No
3	DiaPro Dat	are pumped back into the bottles.		Clean	Yes
4	DiaPro Plu			Clean	No
5	DP-Susper			Clean	Yes
6	DP-Lubrica			Clean	No
7	OP-S			Clean	No

Cleaning function for all tubes

The software contains a built-in cleaning routine for cleaning all the tubes for suspensions and lubricants. Tegramin monitors which suspensions and thus which pumps/tubes have been used and offers the possibility to clean just the tubes with the status "Used". It is also possible to select any tube for cleaning independently. Messages on the display tell exactly what to do and at the end of the operation the selected tubes are clean and ready for e.g. a change to a different grain size.

Automatic tube cleaning after OP polishing

At the end of the OP-polishing step the force is reduced to the lowest possible value, the rotation changed from counter- to co-rotation and a water valve is opened directly after the peristaltic pump. That means that the tube is flushed completely, all OP-Suspension is removed and at the same time both polishing cloth and specimens are cleaned as well. Therefore no chemical attack will take place after the OP-step is finished.

No clogging of dosing tubes

At the end of the process, water is pumped back to replace the OP-Suspension with water, between pump and bottle. This limits the risk of clogged tubes but does not eliminate it completely, as the part of the tube inside the bottle does not get flushed. To overcome this problem, Struers offers OP-S and OP-U NonDry. These colloidal silica suspensions provide excellent polishing results and always stay in liquid format.

It is the small things that improve the daily operation of Tegramin

With Tegramin, not only the preparation quality, but also the operation of the machine is optimised as much as possible.

MD-Disc with cone

It is very easy to remove the MD-Disc and it allows therefore the fast exchange of the bowl liner. It has a higher mass than the traditional MD-Disc so it also keeps the temperature of the preparation surface lower and can easier be cooled down using the disc cooling function.

Easy cleaning with removable bowl liner

A bowl liner that fits precisely into the bowl collects all debris that is not washed down the drain. When the machine has to be cleaned, the bowl liner can easily be removed. It can then either be cleaned or discarded.

Bowl flushing

To further facilitate cleaning, Tegramin-30 and -25 are equipped with a bowl flush function. While the disc is rotating, disc cooling is activated. The water that is sprayed on the bottom of the MD-Disc is distributed to the walls of the bowl, washing away loose debris.

Spin function for cleaning and drying

By holding the disc key down the disc will spin up to maximum speed and thus all excess water after cleaning will be removed from the MD-Disc or the preparation surface.

Motorized horizontal positioning of specimen mover head on Tegramin-30 and Tegramin-25

It is possible to adjust the specimen mover head position relatively to the preparation disc. The centre lines of both discs are identical, so depending on the diameter of the specimen holder or mover plate it can be moved left or right for the best possible utilization of the preparation surface. On Tegramin-20 the position is adjusted manually.

Possibility to connect a recirculation cooling unit

One of Struers' recirculation cooling systems can be connected to Tegramin. This is especially useful to collect grinding debris and to avoid blocking the draining system in the lab. It is also very useful when water is scarce or when there simply is no water connection nearby.

Shift valve to use both recirculation and tap water

For the first time with a table top machine it is possible to connect both tap water and a recirculation cooling system at the same time. Water from the recirculation system can be used for grinding; for the OP-polishing step, where absolutely clean water is a must, tap water is used. The shift valve is activated automatically to direct the waste water in the correct direction to avoid overfilling or emptying of the recirculation cooling unit.

Cover to encase the preparation area

As an option a transparent cover that encloses the entire preparation area is available. The cover offers several advantages: when alcohol-based consumables are used, all the fumes are contained within the cover. The cover can be connected to an exhaust and all fumes can be removed without any personal exposure. When the cover is closed, the user cannot get in contact with any rotating parts and personal safety is improved. When the cover is mounted, the Tegramin cannot be started when the cover is open (unless manual preparation has been selected). The machine will also stop if the cover is opened while a preparation step is running.

Getting the same results every time

It is not one good preparation that is important; it is the same perfect preparation result every time.

Increase reproducibility

Consistent preparation procedures are required to ensure repeatability and reproducibility. Tegramin includes a method database able to store as many as 200 preparation methods.

Start right away

Tegramin includes 10 Struers Metalog Guide methods which cover all major material groups. They are developed for maximum performance of the Tegramin and allow you to get started right away. They also provide an excellent starting point for development of your own methods.

Different user-levels

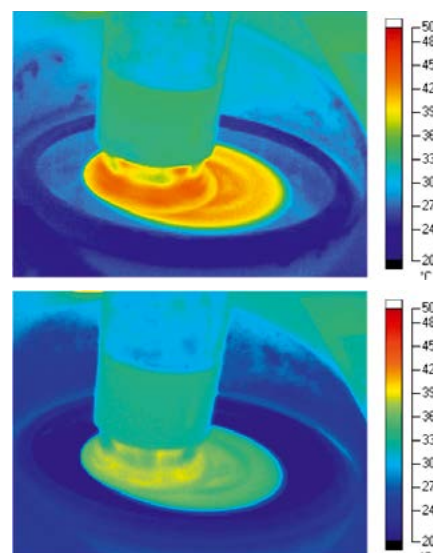
Three different user-levels can be set: Production, Development and Configuration. This allows for the lab manager to configure the machine and develop preparation methods. When the user level then is changed to Production, only a few necessary parameters can be changed while the rest is locked to avoid changes to the preparation result.

Automatic combination of preparation steps with same surface and suspension/lubricant

In some cases, it can be an advantage to divide a preparation step into two or three sub-steps with e.g. different force or dosing levels for even more reliable and fast specimen preparation. Tegramin automatically recognises steps as sub-steps when the same preparation surface and lubricant/suspension are used. It will therefore run these steps in succession, without any user-intervention. This function can be un-selected when SiC Papers are used, as here often several steps are created to allow the change of worn papers.

Disc cooling on Tegramin-30 and Tegramin-25

Underneath the MD-Disc, a nozzle can apply water to the backside of the disc and thus reduce the temperature increase that can occur during preparation, by up to 20°C. With the disc cooling function the temperature of the preparation surface is kept low.



This is particularly relevant for high volume preparation and will not only improve preparation quality, but also keep consumption of suspensions and/or lubricants down.

Different systems for different requirements

Depending on the number and size of specimens to be prepared different system sizes are available.

Three system sizes

Tegramin is available for three different disc sizes: Tegramin-30 for 300 mm discs, Tegramin-25 for 250 mm discs and Tegramin-20 for 200 mm discs.

High preparation capacity

On Tegramin-30: up to 6 individual specimens of 50 mm dia. and specimen holders size 160 mm or 200 mm dia.
On Tegramin-25: up to 6 individual specimens of 40 mm dia. or 3 individual specimens of 50 mm dia. and specimen holders size 140 mm or 160 mm dia.
On Tegramin-20: up to 4 individual specimens of 40 mm dia.

Variable speed of disc and specimen mover head

Tegramin is equipped with variable disc speed of 40-600 rpm and variable specimen mover head speed of 50-150 rpm. This allows for preparation of very sensitive materials at low speed, as well as fast preparation with high material removal at higher speeds.

Sturdy and du



Cover*

a transparent cover that encloses the entire preparation area



Dosing module*

3 different dosing modules for automatic dosing of consumables



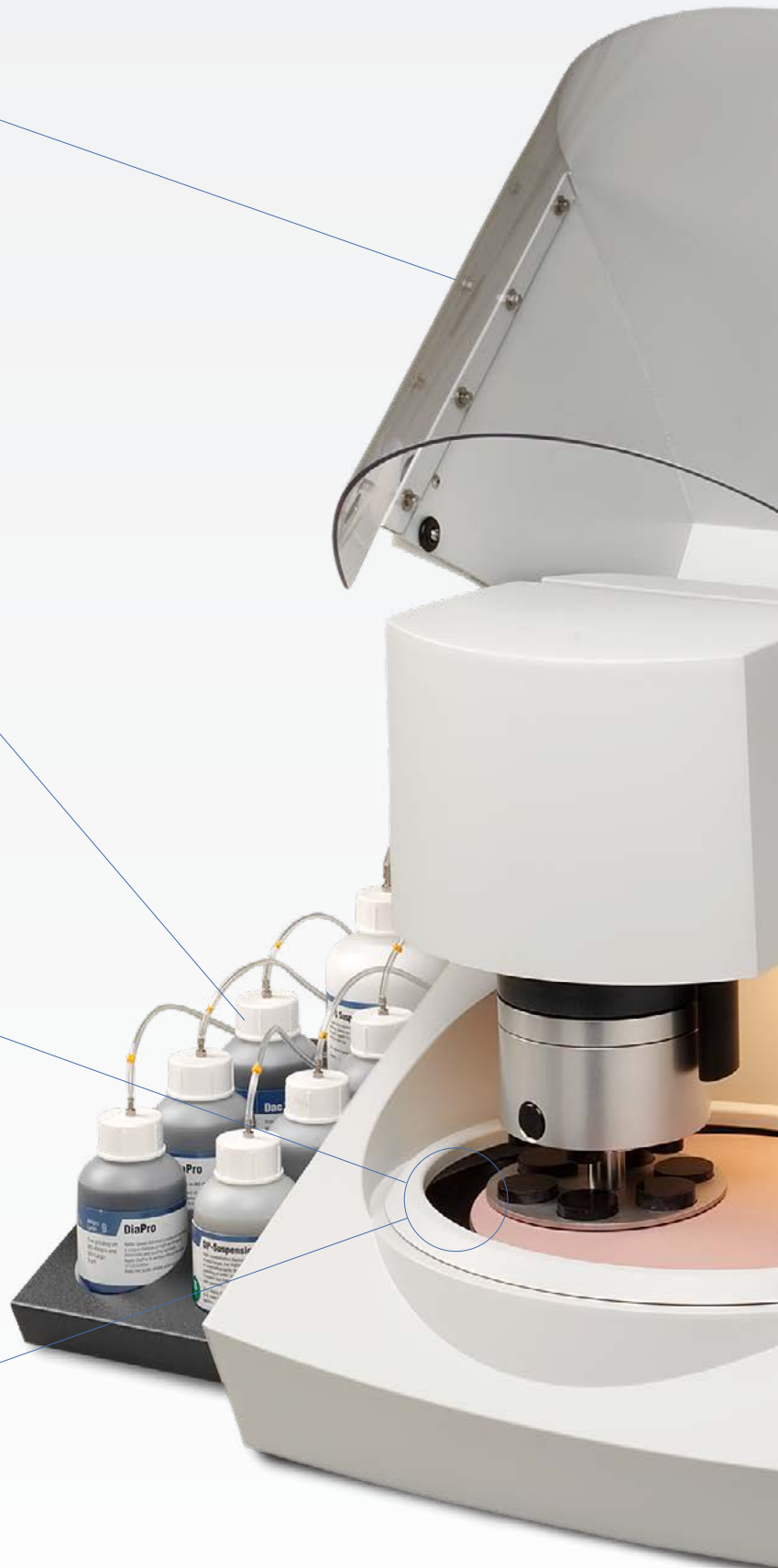
MD-Disc with cone*

easy to remove the MD-Disc and for fast exchange of the bowl liner



Removable bowl liner*

easy cleaning with a bowl liner that collects all debris that is not washed down the drain



*to be ordered separately

able design



LED light

illuminates the entire preparation area and makes it easy to follow the preparation process



Emergency stop

for immediate stopping of all moving parts in case of an emergency



Large colour display

showing all parameters of preparation steps in an easy-to-read-way and user-friendly



Turn/push knob

facilitates and speeds up the entire machine operation and programming

Technical data		Tegramin-20	Tegramin-25	Tegramin-30
Disc	Diameter	200 mm / 8"	250 mm / 10"	300 mm / 12"
	Speed	40-600 rpm, variable in steps of 10		
	Rotational direction	Counter-clockwise		
	Motor power continuous / max	370 / 555 W / 0.5 / 0.75 HP	750 / 1125 W / 1.0 / 1.5 HP	
	Torque at disc Cont. at <300 rpm Cont. at 600 rpm Max.	11.8 Nm / 8.7 ft-lbf 5.9 Nm / 4.4 ft-lbf > 18 Nm / 13.3 ft-lbf	23.8 Nm / 17.6 ft-lbf 11.9 Nm / 8.8 ft-lbf > 40 Nm / 29.6 ft-lbf	
Head	Speed	50-150 rpm, variable in steps of 10		
	Rotational direction	Clockwise, counter-clockwise		
	Force	Individual specimens: 5-50 N	Specimen holder: 30-300 N Individual specimens: 5-50 N	Specimen holder: 30-400 N Individual specimens: 5-65 N
	Motor	120 W		160 W
	Torque	7.5 Nm / 5.6 ft-lbf		10.2 Nm / 7.6 ft-lbf
Software and electronics	Controls	Touch pad and turn/push knob		
	Memory	FLASH-ROM / RAM / NV-RAM		
	LC Display	TFT-colour 320x240 dots with LED back light		
Safety	Please refer to the Declaration of Conformity			
Stop Mechanisms Designed to comply with:	Emergency stop	EN60204-1, Stop Category 0 EN954-1, Category 2		
	Cover	EN60204-1, Stop Category 2 EN954-1, Category B		
Noise level	At idle running, at a distance 1.0 m / 39.4" from the machine	47 dBA		
	During preparation	Polishing 54 dBA, Grinding 56 dBA		
Surrounding temperature	5-40°C / 41-104°F			
Humidity	Non condensing	0-95% RH		
Supply	Voltage / frequency	200-240 V / 50-60 Hz		
	Power inlet	1-phase (N+L1+PE) or 2-phase (L1+L2+PE) The electrical installation must comply with "Installation Category II".		
	Power, nominal load	680 W	1060 W	
	Power, idle	9 W	13 W	
	Current, nom.	3.4 A	5.3 A	
	Current, max.	6.3 A	10 A	
	Pressure for tap water	1-10 bar / 14.5-145 psi		
	Water inlet	¾"		
	Water outlet	ø30 mm / 1¼"	ø40 mm / 1½"	
	Air inlet	ø6 mm		
	Air pressure	6-10 bar / 86-145 psi		
Air quality	The air supplied must be of Class-3 or better, as specified in ISO 8573-1.			
"Exhaust" (with Cover only)	Dimension	ø50 mm / 2" Recommended capacity for exhaust system: 50 m³/h / 1750 ft³/h at 0 mm water gauge.		
Dimensions and weight (without Cover)	Width	60 cm / 23.6"	67.5 cm / 26.6"	
	Depth	65 cm / 25.6"	75 cm / 29.5"	
	Height	48 cm / 18.9"	56 cm / 22"	
	Weight	52.5 kg / 116 lbs	90 kg / 198 lb	
Dimensions and weight (with Cover)	Width	60 cm / 23.6"	67.5 cm / 26.6"	
	Depth	65 cm / 25.6"	75 cm / 29.5"	
	Height (cover closed/open)	50 cm / 19.7" / 85 cm / 33.5"	58.2 cm / 22.9" / 90 cm / 35.4"	
	Weight	58 kg / 128 lbs	98 kg / 216 lb	

Struers' equipment is in conformity with the provisions of the applicable International Directives and their appurtenant Standards (please contact your local supplier for details).

Struers' products are subject to constant product development. Therefore, we reserve the right to introduce changes in our products without notice.

SPECIFICATIONS

Cat.no

Tegramin-30

Automatic, microprocessor controlled machine for grinding and polishing of specimens on 300 mm MD-Disc with cone. Dosing modules, MD-Disc with cone and specimen holders and mover plates are ordered separately.

06036127

Tegramin-30 with cover

Automatic, microprocessor controlled machine for grinding and polishing of specimens on 300 mm MD-Disc with cone. With transparent cover. Dosing modules, MD-Disc with cone and specimen holders and mover plates are ordered separately.

06036227

Tegramin-25

Automatic, microprocessor controlled machine for grinding and polishing of specimens on 250 mm MD-Disc with cone. Dosing modules, MD-Disc with cone and specimen holders and mover plates are ordered separately.

06026127

Tegramin-25 with cover

Automatic, microprocessor controlled machine for grinding and polishing of specimens on 250 mm MD-Disc with cone. With transparent cover. Dosing modules, MD-Disc with cone and specimen holders and mover plates are ordered separately.

06026227

Tegramin-20

Automatic, microprocessor- controlled machine for grinding and polishing of specimens on 200 mm MD-Disc with cone. Dosing modules, MD-Disc with cone and specimen mover plates are ordered separately.

06016127

Tegramin-20 with cover

Automatic, microprocessor- controlled machine for grinding and polishing of specimens on 200 mm MD-Disc with cone. With transparent cover. Dosing modules, MD-Disc with cone and specimen mover plates are ordered separately.

06016227

Tegramin Dosing Module with 1 DP pump

To be installed on Tegramin-30 / -25 or -20. With one pump for diamond suspensions or lubricants.

06036900

Tegramin Dosing Module with 2 DP pumps

To be installed on Tegramin-30 / -25 or -20. With two pumps for diamond suspensions or lubricants.

06036901

Tegramin Dosing Module with 2 DP and 1 OP pump

To be installed on Tegramin-30 / -25 or -20. With two pumps for diamond suspensions or lubricants and one pump for OP suspensions.

06036902

Lavamin

Specimen cleaning unit for cleaning of specimen holders up to 160 mm dia. and for individual specimens in specimen mover plates for Tegramin-25, -30, TegraForce-5 and RotoForce-4.

06236133

Bottle tray for Tegramin. With space for six ½ l bottles and one 1l bottle. To be used with Tegramin-30 / -25 or -20.

06036910

Preparation Discs

MD-Disc with cone for Tegramin-30, 300 mm dia.
MD-Disc with cone for Tegramin-25, 250 mm dia.
MD-Disc with cone for Tegramin-20, 200 mm dia

06086403
06086402
06086401

Cover

Transparent cover for Tegramin-25/-30
Transparent cover for Tegramin-20

06036903
06016903

Lid

For Tegramin-25 and Tegramin-30
For Tegramin-20

06036906
06016906

Splash guard**for manual preparation**

For Tegramin-30
For Tegramin-25
For Tegramin-20

06036905
06026905
06016905

Disposable bowl liner

For Tegramin-25 / -30. 5 pcs.
For Tegramin-20. 5 pcs.

49900052
49900056

Shift valve for Tegramin

For recirculation cooling unit (05766xxx) or drain.

06036904

Struers Cooling Unit, System 3. With 50 l tank, small pump, Cooli-1, 50 l static filter with filter paper.

1 x 100 V / 50 Hz

05766516

1 x 220-240 V / 50 Hz

05766522

1 x 100-120 V / 60 Hz

05766523

1 x 220-240 V / 60 Hz

05766524

1 x 100-120 V / 50-60 Hz CSA

05766616

Levelling device. For levelling of specimens in specimen holders (ø 140 mm)

05256903

Levelling device, Uniforce. For levelling of specimens in specimen holders ø 140, 160 and 200 mm. With pressure foot for positioning of specimens

04886101
04886102

Coupling

For Tegramin-30 and Tegramin-25 specimen mover plates.
For Tegramin-20 specimen mover plates.

06086901
06086900

Specimen mover plates, for individual specimens

Without holes
For 6 specimens 25 mm dia.
For 6 specimens 1" dia.
For 6 specimens 30 mm dia.
For 6 specimens 1¼" dia.
For 6 specimens 1½" dia.
For 6 specimens 40 mm dia.
For 3 specimens 50 mm dia.
For 3 specimens 2" dia.
For 6 specimens 50 mm dia.
For 6 specimens 2" dia.
For 6 specimens 20 x 30 mm
For Accustop 30
For Accustop 40 + TYNDS

For Tegramin-25

06086906
06086902
06086909
06086903
06086910
06086911
06086904
06086905
06086943
-
-
-
06086907
-

For Tegramin-30

06086936
06086932
06086939
06086933
06086940
06086941
06086934
-
06086935
06086942
06086944
06086937
06086938

Specimen mover plates for Tegramin-20, for individual specimens

Without holes
For 4 x 25 mm dia.
For 4 x 30 mm dia.
For 4 x 40 mm dia.
For 4 x 1" dia.
For 4 x 1¼" dia.
For 4 x 1½" dia.

06086918
06086912
06086913
06086914
06086915
06086916
06086917



Lavamin - Fully automatic cleaning unit

You save time with a faster cleaning process and the opportunity to change the preparation surface while the specimens are being cleaned. Automated cleaning perfection every time and avoid replacement of preparation surfaces due to accidental contamination. In addition to saving you time and costs, Lavamin eliminates chemical cleaning agents and leaves no environmental footprint.



A wide range of specimen mover plates are available for Tegramin.





Struers ApS
Pederstrupvej 84
DK-2750 Ballerup, Denmark

Phone +45 44 600 800
Fax +45 44 600 801
struers@struers.dk
www.struers.com

AUSTRALIA & NEW ZEALAND

Struers Australia
27 Mayneview Street
Milton QLD 4064
Australia
Phone +61 7 3512 9600
Fax +61 7 3369 8200
info.au@struers.dk

BELGIQUE (Wallonie) Struers S.A.S.

370, rue du Marché Rollay
F- 94507 Champigny
sur Marne Cedex
Téléphone +33 1 5509 1430
Télécopie +33 1 5509 1449
struers@struers.fr

BELGIUM (Flanders) Struers GmbH Nederland

Zomerdijk 34 A
3143 CT Maassluis
Telefoon +31 (10) 599 7209
Fax +31 (10) 5997201
netherlands@struers.de

CANADA

Struers Ltd.
7275 West Credit Avenue
Mississauga, Ontario L5N 5M9
Phone +1 905-814-8855
Fax +1 905-814-1440
info@struers.com

CHINA

Struers Ltd.
No. 1696 Zhang Heng Road
Zhang Jiang Hi-Tech Park
Shanghai 201203, P.R. China
Phone +86 (21) 6035 3900
Fax +86 (21) 6035 3999
struers@struers.cn

CZECH REPUBLIC & SLOVAKIA

Struers GmbH Organizační složka
vědeckotechnický park
Přilepská 1920,
CZ-252 63 Roztoky u Prahy
Phone +420 233 312 625
Fax +420 233 312 640
czechrepublic@struers.de
slovakia@struers.de

DEUTSCHLAND

Struers GmbH
Carl-Friedrich-Benz-Straße 5
D-47877 Willich
Telefon +49 (0) 2154 486-0
Fax +49 (0) 2154 486-222
verkauf@struers.de

FRANCE

Struers S.A.S.
370, rue du Marché Rollay
F-94507 Champigny
sur Marne Cedex
Téléphone +33 1 5509 1430
Télécopie +33 1 5509 1449
struers@struers.fr

HUNGARY

Struers GmbH
Magyarország Fióktelep
Tatai út 53
2821 Gyermely
Phone +36 (34) 880546
Fax +36 (34) 880547
hungary@struers.de

IRELAND

Struers Ltd.
Unit 11 Evolution@ AMP
Whittle Way, Catcliffe
Rotherham S60 5BL
Tel. +44 0845 604 6664
Fax +44 0845 604 6651
info@struers.co.uk

ITALY

Struers Italia
Via Monte Grappa 80/4
20020 Arese (MI)
Tel. +39-02/38236281
Fax +39-02/38236274
struers.it@struers.it

JAPAN

Marumoto Struers K.K.
Takara 3rd Building
18-6, Higashi Ueno 1-chome
Taito-ku, Tokyo 110-0015
Phone +81 3 5688 2914
Fax +81 3 5688 2927
struers@struers.co.jp

NETHERLANDS

Struers GmbH Nederland
Zomerdijk 34 A
3143 CT Maassluis
Telefoon +31 (10) 599 7209
Fax +31 (10) 5997201
netherlands@struers.de

NORWAY

Struers ApS, Norge
Sjøs kogenvæien 44C
1407 Vinterbro
Telefon +47 970 94 285
info@struers.no

ÖSTERREICH

Struers GmbH
Zweigniederlassung Österreich
Betriebsgebiet Puch Nord 8
5412 Puch
Telefon +43 6245 70567
Fax +43 6245 70567-78
austria@struers.de

POLAND

Struers Sp. z o.o.
Oddział w Polsce
ul. Jasnogórska 44
31-358 Kraków
Phone +48 12 661 20 60
Fax +48 12 626 01 46
poland@struers.de

ROMANIA

Struers GmbH, Sucursala Bucuresti
Str. Preciziei nr. 6R
062203 sector 6, Bucuresti
Phone +40 (31) 101 9548
Fax +40 (31) 101 9549
romania@struers.de

SCHWEIZ

Struers GmbH
Zweigniederlassung Schweiz
Weissenbrunnstraße 41
CH-8903 Birmensdorf
Telefon +41 44 777 63 07
Fax +41 44 777 63 09
switzerland@struers.de

SINGAPORE

Struers Singapore
627A Aljunied Road,
#07-08 BizTech Centre
Singapore 389842
Phone +65 6299 2268
Fax +65 6299 2661
struers.sg@struers.dk

SPAIN

Struers España
Camino Cerro de los Gamos 1
Building 1 - Pozuelo de Alarcón
CP 28224 Madrid
Teléfono +34 917 901 204
Fax +34 917 901 112
struers.es@struers.es

SUOMI

Struers ApS, Suomi
Hietalahdenranta 13
00180 Helsinki
Puhelin +358 (0)207 919 430
Faksi +358 (0)207 919 431
finland@struers.fi

SWEDEN

Struers Sverige
Ekbacksvägen 22
168 69 Bromma
Telefon +46 (0)8 447 53 90
Telefax +46 (0)8 447 53 99
info@struers.se

UNITED KINGDOM

Struers Ltd.
Unit 11 Evolution @ AMP
Whittle Way, Catcliffe
Rotherham S60 5BL
Tel. +44 0845 604 6664
Fax +44 0845 604 6651
info@struers.co.uk

USA

Struers Inc.
24766 Detroit Road
Westlake, OH 44145-1598
Phone +1 440 871 0071
Fax +1 440 871 8188
info@struers.com

Ensuring Certainty

With offices and affiliates in 24 countries and a presence in more than 50 countries worldwide, Struers is the world's leading materialographic solution supplier. We are dedicated to enabling our customers to ensure certainty in all aspects of materialographic preparation and testing as well as material hardness testing - wherever they are in the world. Struers offers a complete range of equipment, consumables, service and training programmes - all supported by the most comprehensive knowledge base, global applications support and a certified global service set-up.

Learn more

Contact a Struers sales representative today or visit www.struers.com



e-Shop

Buy your consumables
in Struers e-Shop!
e-shop.struers.com