

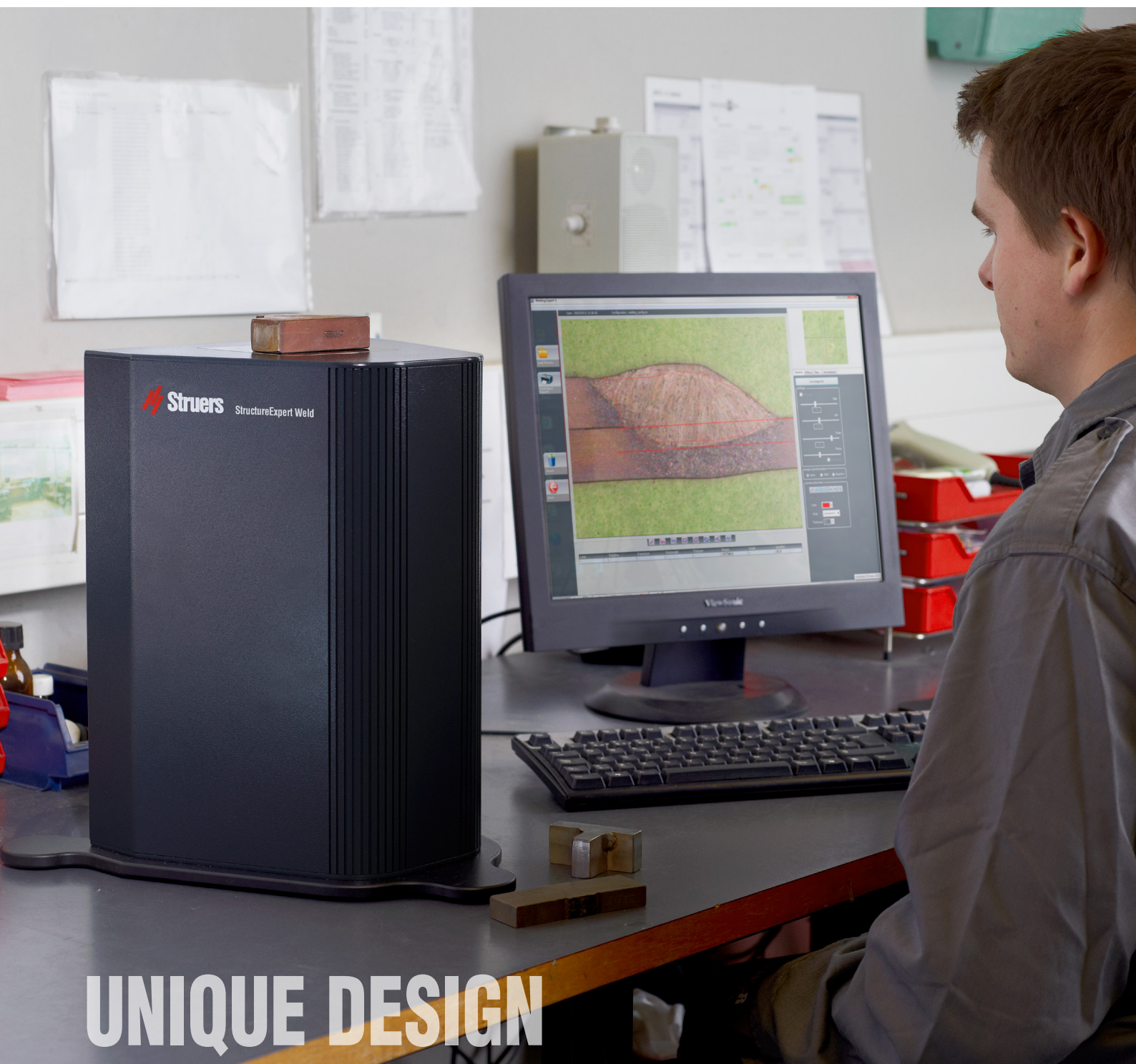
Reliable Welding Control – Every Time



- Save time
- Ensure accuracy
- Achieve maximum weld bead control

The simple way to precise weld bead inspection, measurement and control

Welding quality control is an important part of a production process. You need to ensure each inspection is accurate and meets your quality standards. But weld bead inspection can be tedious, time-consuming and costly – especially if you spend a lot of time manually calibrating and adjusting equipment and software that are not specifically designed for welding control.



UNIQUE DESIGN

Now you can ensure maximum weld bead quality with StructureExpert Weld. StructureExpert Weld is the only stand-alone dedicated imaging tool that gives you a simple way to ensure precise and cost-efficient weld bead inspection, measurement and reporting – all in one solution.

Unique design and features enable you to ensure accuracy, efficiency and control of after-weld quality assurance processes.

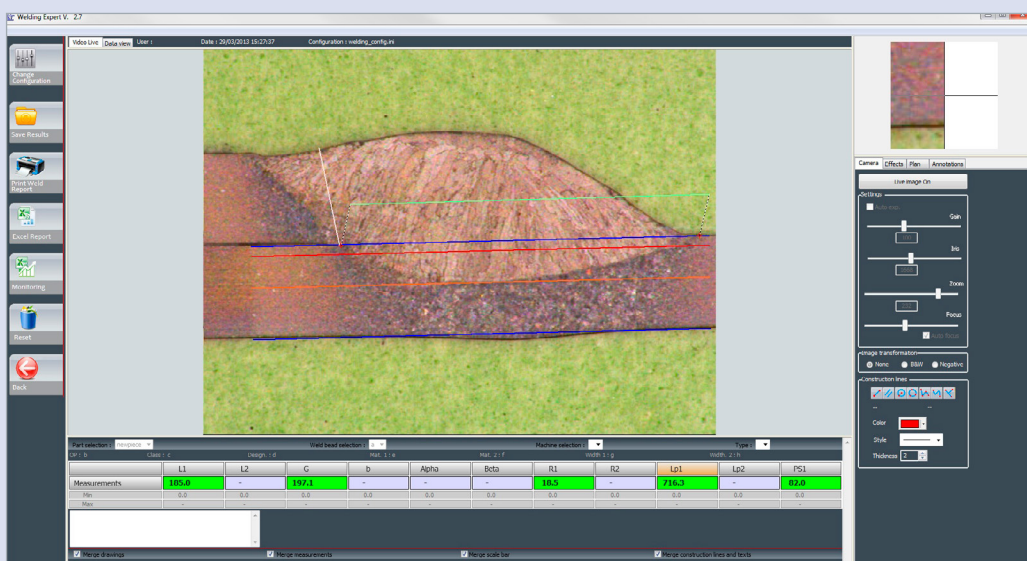
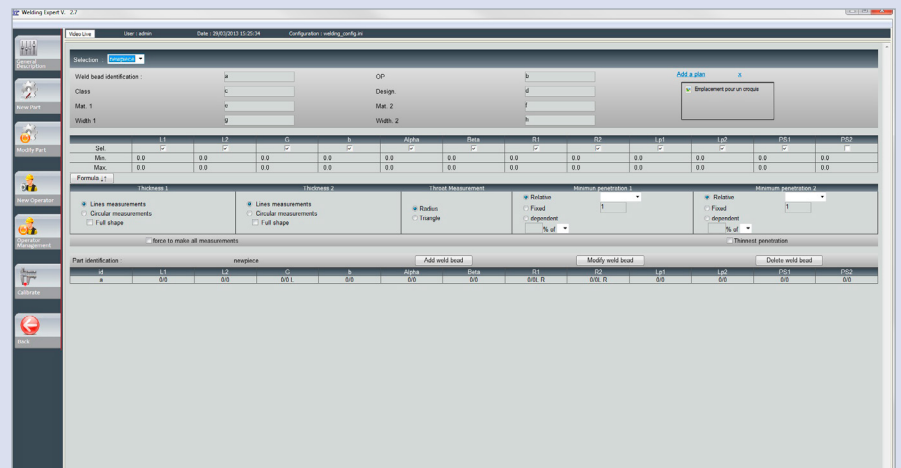
Save time

StructureExpert Weld is designed for easy, precise placement of your prepared sample. The unique inverted optical system ensures that the sample surface always has

the same distance to the camera, making continuous height adjustments and calibrations unnecessary. Simply place your sample on the glass surface and the built-in digital camera and an autofocus zoom lens will give you maximum flexibility in selecting a perfect field of view for all measurements. And with just one click you have the information you need for your check.

Metrology System Administration

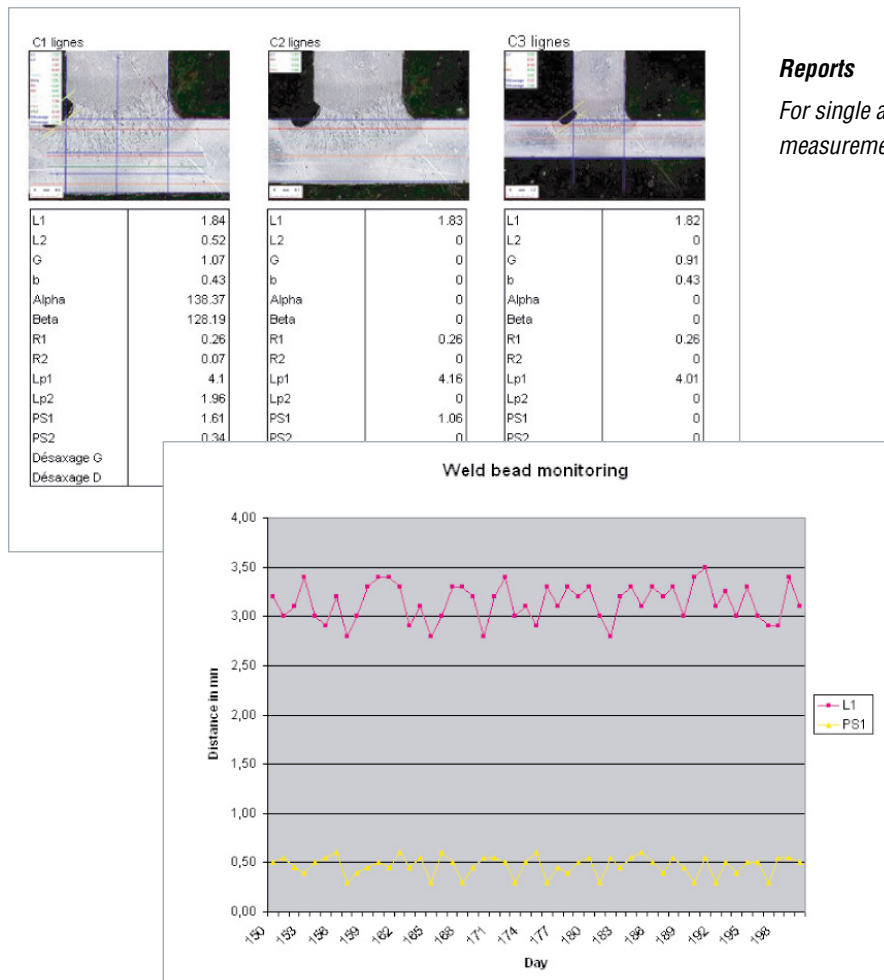
A complete description of the welding part and the weld bead acceptance criteria are registered and protected by password. All parameters are automatically loaded and processed during measurements achieved by operators.



Measurement

StructureExpert Weld allows measurement of samples ranging from 80 mm to 0.7 mm, with accuracy down to 0.5 μm . Red or green colours quickly indicate whether you are in or outside tolerances. Measurement results can be saved into Excel spreadsheets.

DEDICATED SOFTWARE



Reports

For single as well as multiple weld bead measurements a report can be created.

Statistics

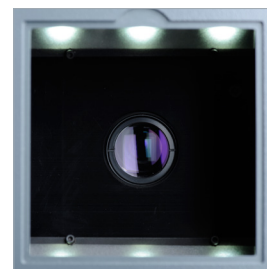
StructureExpert Weld includes a software module for the qualitative monitoring of weld beads and parts and statistical tools are provided to ensure a complete tracking of the welding process.

Minimize mistakes and errors

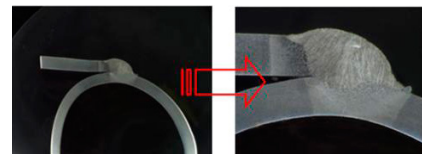
StructureExpert Weld helps to minimize mistakes and errors due to manual adjustment. The built-in digital camera and software-controlled magnification adjustment make it easy to find the best field of view. The calibration is loaded automatically with the set magnification – ensuring maximum accuracy and reproducibility. The dedicated internal LED ring light provides bright, uniform illumination for crisp, high image contrast and precise measurements.

Manage welding control processes efficiently

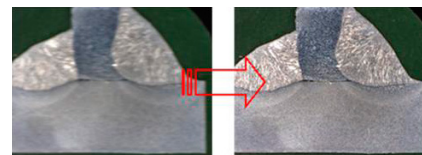
StructureExpert Weld helps you boost welding quality. Dedicated weld control software with specific measurement tools ensure that weld bead measurement and analysis processes are performed accurately. Through easy-to-customize report templates and data tracking possibilities you can both speed up your processes and ensure full traceability of them.



Built-in digital camera and internal LED ring light



Motorized zoom function and automatic illumination adjustment



Autofocus

Specifications

StructureExpert Weld-5

Dedicated imaging system for weld bead measurement. Consists of compact housing, LED lighting system, digital camera with motorized zoom and dedicated software for measurement and reporting. Field of view from 80 to 4.5 mm (3.1" to 0.2"), equivalent to 2.5x - 50x magnification. Includes 5 glass windows (CLSET001), 2 protection covers, calibration plate (CLCAL001) and necessary cables.

Additional software modules (CLOUT002, CLOUT003, CLDAT002) are ordered separately. UKAS certificate (CLUKA001) for calibration plate and Plastic covers (CLSET002) are optional. PC and monitor are required, but not included.

Cat. no:

CLWEL019

StructureExpert Weld-11

Dedicated imaging system for weld bead measurement. Consists of compact housing, LED lighting system, digital camera with motorized zoom and dedicated software for measurement and reporting. Field of view from 8.27 to 0.68 mm (0.33" to 0.03"), equivalent to 20x - 240x magnification. Includes 5 glass windows (CLSET001), 2 protection covers, calibration plate (CLCAL003) and necessary cables.

Additional software modules (CLOUT002, CLOUT003, CLDAT002) are ordered separately. UKAS certificate (CLUKA002) for calibration plate and Plastic covers (CLSET002) are optional. PC and monitor are required, but not included.

CLSYS011

Accessories

Glass Window

Glass windows for StructureExpert Weld, 5 pcs.

Cat. no:

CLSET001

Glass Window, hardened

Hardened glass windows for StructureExpert Weld, 5 pcs.

CLWEL003

Process Tracking Module

Software module for process tracking of measurement evolution over a specific time period.

CLOUT002

Data View Module

Software module for extended display of old measurement data and for edition of old measurement results.

CLDAT002

Min & Max Action Limit Module

Software module for definition of additional min./max. action limits (in addition to the standard min./max. acceptance criteria limits.) Includes additional report templates.

CLOUT003

Report Generator Module

Software module for creation and editing of Excel report templates.

CLREP002

Plastic Covers

Plastic covers for prevention of water and dirt entering the camera chamber. With mounting bracket. 100 pcs.

CLSET002

Calibration Plate

Calibration plate for calibration of StructureExpert Weld-5 measurement software. 50 mm. Including accredited certificate CLUKA001

CLCAL001
CLCAL001C

Calibration Plate

Calibration plate for calibration of StructureExpert Weld-11 measurement software. 50 mm. Including accredited certificate CLUKA002

CLCAL003
CLCAL003C

UKAS Certificate for Calibration Plate

Accredited certificate (UKAS) for calibration plate CLCAL001. 10 points calibration. Can only be ordered in combination with CLWEL019.

CLUKA001

UKAS Certificate for Calibration Plate

Accredited certificate (UKAS) for calibration plate CLCAL003. 10 points calibration. Can only be ordered in combination with CLSYS011.

CLUKA002

Coaxial illumination for StructureExpert Weld-11

Illumination system for improved structural analysis. For StructureExpert Weld-11

CLWE0020

General Data

StructureExpert Weld-5

H x W x D: 35 x 24.5 x 22 cm (13.8 x 9.6 x 8.7")
4 Kg / 9 lbs

StructureExpert Weld-11

H x W x D: 42.5 x 24.8 x 22 cm (16.7 x 9.8 x 8.7")
6 Kg / 13 lbs

Power supply

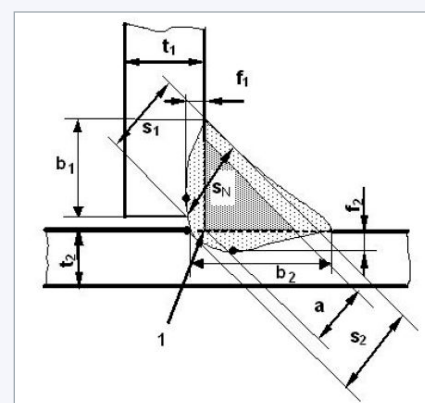
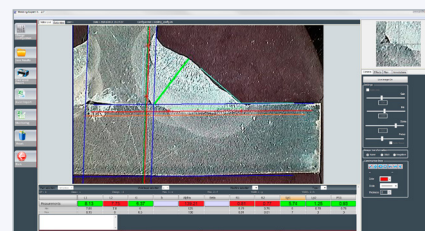
1 x 110-220 V / 50-60 Hz

PC recommendations

Windows XP Pro SP3 / Windows Vista /
Windows 7 / Windows 8 / Windows 10, 32 & 64 bits
2 Ghz Processor / 2 GB RAM /
1280x1024 graphic card (min.)
Excel 2003 Pro Edition or higher
Min. 2 x USB 2.0 ports (camera + dongle)
19" LCD monitor

Struers' equipment is in conformity with the provisions of the applicable International Directives and their appurtenant Standards. (Please contact your local supplier for details)

Struers' products are subject to constant product development. Therefore, we reserve the right to introduce changes in our products without notice.



Measurement

Measurements are easily performed according to individual standards and acceptance criterias. Red or green colours quickly indicate whether you are in or outside tolerances.



Struers ApS
Pederstrupvej 84
DK-2750 Ballerup, Denmark

Phone +45 44 600 800
Fax +45 44 600 801
struers@struers.dk
www.struers.com

SINGAPORE
Struers Singapore
627A Aljunied Road,
#07-08 BizTech Centre
Singapore 389842
Phone +65 6299 2268
Fax +65 6299 2661
struers.sg@struers.dk

SPAIN
Struers España
Camino Cerro de los Gamos 1
Building 1 - Pozuelo de Alarcón
CP 28224 Madrid
Teléfono +34 917 901 204
Fax +34 917 901 112
struers.es@struers.es

SUOMI
Struers ApS, Suomi
Hietaladhenranta 13
00180 Helsinki
Puhelin +358 (0)207 919 400
Faksi +358 (0)207 919 431
finland@struers.fi

SWEDEN
Struers Sverige
Ekbacksvägen 22
168 69 Bromma
Telefon +46 (0)8 447 53 90
Telefax +46 (0)8 447 53 99
info@struers.se

UNITED KINGDOM
Struers Ltd.
Unit 11 Evolution @ AMP
Whittle Way, Catcliffe
Rotherham S60 5BL
Tel. +44 0845 604 6664
Fax +44 0845 604 6651
info@struers.co.uk

USA
Struers Inc.
24766 Detroit Road
Westlake, OH 44145-1598
Phone +1 440 871 0071
Fax +1 440 871 8188
info@struers.com

AUSTRALIA & NEW ZEALAND
Struers Australia
27 Mayneview Street
Milton QLD 4064
Australia
Phone +61 7 3512 9600
Fax +61 7 3369 8200
info.au@struers.dk

BELGIQUE (Wallonie)
Struers S.A.S.
370, rue du Marché Rollay
F- 94507 Champigny
sur Marne Cedex
Téléphone +33 1 5509 1430
Télécopie +33 1 5509 1449
struers@struers.fr

BELGIUM (Flanders)
Struers GmbH Nederland
Elektraweg 5
3144 CB Maassluis
Telefoon +31 (10) 599 7209
Fax +31 (10) 5997201
netherlands@struers.de

CANADA
Struers Ltd.
7275 West Credit Avenue
Mississauga, Ontario L5N 5M9
Phone +1 905-814-8855
Fax +1 905-814-1440
info@struers.com

CHINA
Struers Ltd.
No. 1696 Zhang Heng Road
Zhang Jiang Hi-Tech Park
Shanghai 201203, P.R. China
Phone +86 (21) 6035 3900
Fax +86 (21) 6035 3999
struers@struers.cn

CZECH REPUBLIC & SLOVAKIA
Struers GmbH Organizační složka
vědeckotechnický park
Přílepská 1920,
CZ-252 63 Roztoky u Prahy
Phone +420 233 312 625
Fax +420 233 312 640
czechrepublic@struers.de
slovakia@struers.de

DEUTSCHLAND
Struers GmbH
Carl-Friedrich-Benz-Straße 5
D-47877 Willich
Telefon +49 (0) 2154 486-0
Fax +49 (0) 2154 486-222
verkauf@struers.de

FRANCE
Struers S.A.S.
370, rue du Marché Rollay
F-94507 Champigny
sur Marne Cedex
Téléphone +33 1 5509 1430
Télécopie +33 1 5509 1449
struers@struers.fr

HUNGARY
Struers GmbH
Magyarországi Fióktelep
Tatai ut 53
2821 Gyermely
Phone +36 (34) 880546
Fax +36 (34) 880547
hungary@struers.de

IRELAND
Struers Ltd.
Unit 11 Evolution@ AMP
Whittle Way, Catcliffe
Rotherham S60 5BL
Tel. +44 0845 604 6664
Fax +44 0845 604 6651
info@struers.co.uk

ITALY
Struers Italia
Via Monte Grappa 80/4
20020 Arese (MI)
Tel. +39-02/38236281
Fax +39-02/38236274
struers.it@struers.it

JAPAN
Marumoto Struers K.K.
Takara 3rd Building
18-6, Higashi Ueno 1-chome
Taio-ku, Tokyo 110-0015
Phone +81 3 5688 2914
Fax +81 3 5688 2927
struers@struers.jp

NETHERLANDS
Struers GmbH Nederland
Zomerdijk 34 A
3143 CT Maassluis
Telefoon +31 (10) 599 7209
Fax +31 (10) 5997201
netherlands@struers.de

NORWAY
Struers ApS, Norge
Sjøslogenveien 44C
1407 Vinterbro
Telefon +47 970 94 285
info@struers.no

ÖSTERREICH
Struers GmbH
Zweigniederlassung Österreich
Betriebsgebiet Puch Nord 8
5412 Puch
Telefon +43 6245 70567
Fax +43 6245 70567-78
austria@struers.de

POLAND
Struers Sp. z o.o.
Oddział w Polsce
ul. Jasnogórska 44
31-358 Kraków
Phone +48 12 661 20 60
Fax +48 12 626 01 46
poland@struers.de

ROMANIA
Struers GmbH
Sucursala Sibiu
Str.Scoala de Inot, nr. 18
RO-550005 Sibiu
Phone +40 269 244 558
Fax +40 269 244 559
romania@struers.de

SCHWEIZ
Struers GmbH
Zweigniederlassung Schweiz
Weissenbrunnstraße 41
CH-8903 Birmensdorf
Telefon +41 44 777 63 07
Fax +41 44 777 63 09
switzerland@struers.de

Ensuring Certainty

With offices and affiliates in 24 countries and a presence in more than 50 countries worldwide, Struers is the world's leading materialographic solution supplier. We are dedicated to enabling our customers to ensure certainty in all aspects of materialographic preparation and testing as well as material hardness testing - wherever they are in the world. Struers offers a complete range of equipment, consumables, service and training programmes – all supported by the most comprehensive knowledge base, global applications support and a certified global service set-up.

Learn more

Contact a Struers sales representative today or visit www.struers.com



e-Shop

Buy your consumables
in Struers e-Shop!
e-shop.struers.com