

Secotom-1 has been designed for manual cutting of PCB's and similar applications. With the large cutting table and the adjustable guide rail, PCB's of all different shapes and sizes can easily be sectioned for sample preparation.

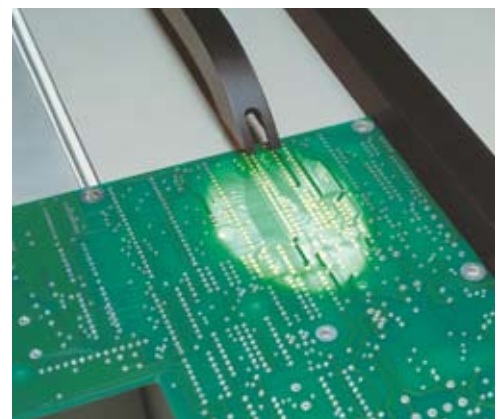
Secotom-1 can also be used for sectioning all other types of thin plates of materials, which can be cut with a resin or metal-bonded diamond cut-off wheel. This could be ceramic sheet or plate material, tiles or other glass or carbon fibre reinforced materials.

Cut-off machine for cutting of PCB's and other thin plates

Large cutting table with built-in illumination and guide rail

Built-in wheel cooling

Very easy to operate



*Illumination from below
- makes positioning
easy and precise*

Easy to operate

Secotom-1 is very easy to operate. As soon as the start button is pressed the light in the cutting table is switched on and the cut-off wheel starts rotating. The PCB can then be positioned in front of the cut-off wheel so that the cut can be performed exactly where necessary.

Adjustable guide rail

The guide rail is easily adjusted sideways and allows PCB or other sample material to be moved exactly parallel to the cut-off wheel.

Illuminated cutting table

To make positioning of the PCB as easy and precise as possible, the manual cutting table is illuminated from underneath. This allows very small holes in the PCB or even the copper conductor paths to be identified through the PCB.

Built-in wheel cooling

Secotom-1 has a built-in wheel cooling system, which ensures a constant low temperature during the cutting process, thus avoiding damage of the sample surface. At the same time the water holds on to the particles created during cutting, reducing the risk of inhalation.

Technical data

	Secotom-1
Cutting motor	800 W
Cut-off wheel sizes	203 mm / 8" dia.
Dimensions and weight	Height: 335 mm / 13.2" Width: 575 mm / 22.6" Depth: 735mm / 28.9" Weight: 46 kg / 101 lb
Rotational speed:	2800 rpm at 50 Hz 3400 rpm at 60 Hz
Cutting power	800 W
Cutting capacity	17 mm high

Specifications

Secotom-1

Cut-off machine for manual cutting. Complete with cutting table with built-in illumination. Angular cutting table with longest sides (DxW) 500 x 520 mm. Cut-off wheels are ordered separately.

See special brochure for more information about cut-off wheels.

Struers' equipment is in conformity with the provisions of the applicable International Directives and their appurtenant Standards. (Please contact your local supplier for details)

Struers' products are subject to constant product development. Therefore, we reserve the right to introduce changes in our products without notice.

AUSTRALIA & NEW ZEALAND

Struers Australia
18 Mayneview Street
Milton QLD 4064
Australia
Phone: +61 7 3512 9600
Fax: +61 7 3369 8200
info.au@struers.dk

BELGIQUE (Wallonie)

Struers S.A.S.
370, rue du Marché Rollay
F-94507 Champigny
sur Marne Cedex
Téléphone +33 1 5509 1430
Télécopie +33 1 5509 1449
struers@struers.fr

CANADA

Struers Ltd.
7275 West Credit Avenue
Mississauga, Ontario L5N 5M9
Phone +1 905-814-8855
Fax +1 905-814-1440
info@struers.com

CHINA

Struers Ltd.
Rm. 702 Hi-Shanghai
No. 970 Dalian Road
Shanghai 200092, P.R. China
Phone +86 (21) 5228 8811
Fax +86 (21) 5228 8821
struers.cn@struers.dk

CZECH REPUBLIC

Struers GmbH
Organizační složka
Havlíčková 361
CZ-252 63 Roztoky u Prahy
Phone +420 233 312 625
Fax: +420 233 312 640
czechrepublic@struers.de

DEUTSCHLAND

Struers GmbH
Carl-Friedrich-Benz-Strasse 5
D-47877 Willich
Telefon +49 (0) 2154 486-0
Fax +49 (0) 2154 486-222
verkauf.struers@struers.de

FRANCE

Struers S.A.S.
370, rue du Marché Rollay
F-94507 Champigny
sur Marne Cedex
Téléphone +33 1 5509 1430
Télécopie +33 1 5509 1449
struers@struers.fr

IRELAND

Struers Ltd.
Unit 11 Evolution@ AMP
Whittle Way
Catcliffe
Rotherham S60 5BL
Tel: 0845 604 6664
Fax: 0845 604 6651
info@struers.co.uk

ITALY

Struers Italia
Via Monte Grappa 80/4
20020 Arese (MI)
Tel. +39-02/38236281
Fax +39-02/38236274
struers.it@struers.dk

JAPAN

Marumoto Struers K.K.
Takara 3rd Building
18-6, Higashi Ueno 1-chome
Taito-ku, Tokyo 110-0015
Phone +81 3 5688 2914
Fax +81 3 5688 2927
struers@struers.co.jp

NETHERLANDS/BELGIUM

Struers GmbH Nederland
Electraweg 5
NL-3144 CB Maassluis
Tel. +31 (0) 10 599 72 09
Fax +31 (0) 10 599 72 01
netherlands@struers.de

POLAND

Struers Sp. z o.o.
Oddział w Polsce
ul. Jasnogórska 44
31-358 Kraków
Phone +48 12 661 20 60
Fax +48 12 626 01 46
poland@struers.de

ROMANIA

Struers GmbH
Sucursala Sibiu
Str.Scoala de Inot, nr. 18
RO-550005 Sibiu
Phone +40 269 244 558
Fax +40 269 244 559
romania@struers.de

SCHWEIZ

Struers GmbH
Zweigniederlassung Schweiz
Weissenbrunnenstrasse 41
CH-8903 Birmensdorf
Telefon +41 44 777 63 07
Fax +41 44 777 63 09
switzerland@struers.de

SINGAPORE

Struers Singapore
627A Aljunied Road,
#07-08 BizTech Centre
Singapore 389842
Phone +65 6299 2268
Fax +65 6299 2661
struers.sg@struers.dk

SUOMI

Struers A/S, Sivuliike Suomessa
Kalevankatu 43
00180 Helsinki
Puhelin 0207 919 430
Faksi 0207 919 431
finland@struers.dk

SWEDEN

Struers A/S
Ekbacksvägen 22, 3 tr
SE-168 69 Bromma
Telefon +46 (0)8 447 53 90
Telefax +46 (0)8 447 53 99
struers@struers.dk

UNITED KINGDOM

Struers Ltd.
Unit 11 Evolution@ AMP
Whittle Way
Catcliffe
Rotherham S60 5BL
Tel: 0845 604 6664
Fax: 0845 604 6651
info@struers.co.uk

USA

Struers Inc.
24766 Detroit Road
Westlake, OH 44145-1598
Phone +1 440 871 0071
Fax +1 440 871 8188
info@struers.com

ÖSTERREICH

Struers GmbH
Zweigniederlassung Österreich
Ginzkeyplatz 10
A-5020 Salzburg
Telefon +43 662 625 711
Fax +43 662 625 711 78
austria@struers.de

Struers A/S

Pederstrupvej 84
DK-2750 Ballerup,
Denmark
Phone +45 44 600 800
Fax +45 44 600 801
struers@struers.dk
www.struers.com

