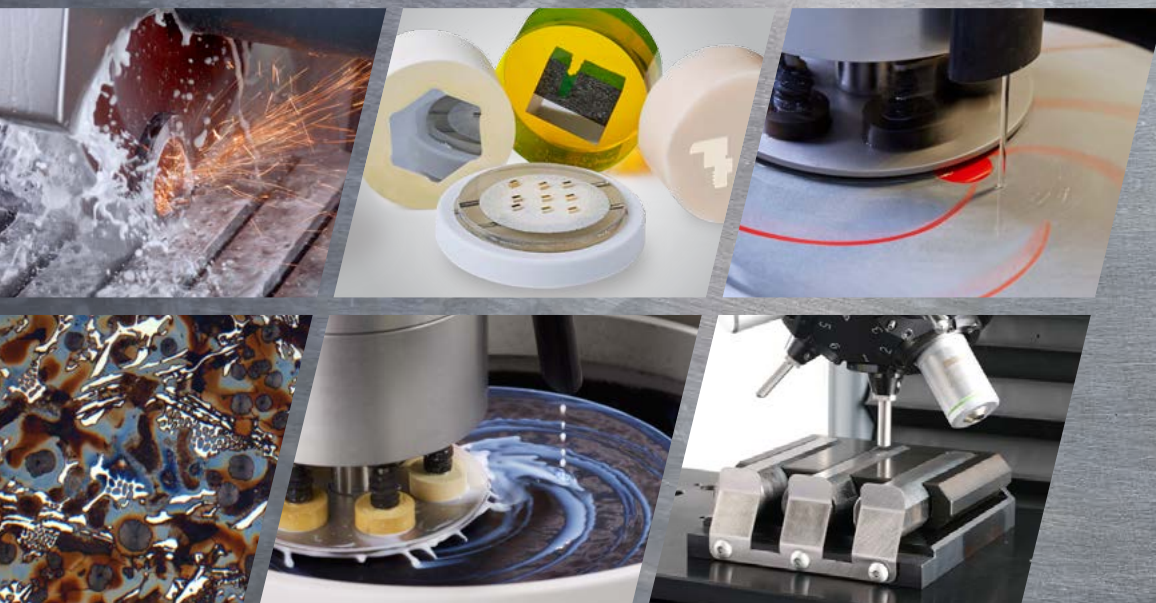


MATERIALOGRAPHIC CONSUMABLES CATALOGUE





Service | Guard

Struers ServiceGuard is a comprehensive range of technical services and training designed to help you guard the availability, predictability and uptime of your Struers equipment.

Availability

Time is of the essence if you suddenly face an unexpected problem that could impact your own performance. You can count on us to ensure rapid delivery of spare parts and the availability of an experienced service engineer – wherever you are.

Uptime

Properly installed, maintained and optimized equipment ensures your peace of mind by ensuring maximum uptime. You can depend on us to train your operatives in correct usage of your equipment in order to ensure constant quality and performance.

Predictability

Your customers need certainty of valid testing. Regular planned maintenance by experienced Struers field service engineers is the key to high test predictability, delivery and cost optimization.

Read more on page 53 or www.struers.com under Technical Service.

Performance and peace of mind

“Service is not only about sustaining optimum performance for our customers. It also gives peace of mind and more time to deal with other issues. The value we deliver comes from our commitment, experience and expertise over many years, and the confidence and trust of our customers.”

Thomas Graulund, Field Service Engineer, Struers Nordic

Consumables Catalogue

Cutting	5	Accessories	55
Abrasive Cut-off Wheels	6	Mounting	56
Diamond and CBN Cut-off Wheels	11	Preparation discs	56
Saw Blades	14	Automatic Cleaning	56
Additive	14	Controlled Material Removal	57
Others	15	Non-Destructive Testing	57
		General Purpose	57
Mounting	17	Hardness Testing	59
Hot Mounting	18	Indenters	60
Cold Mounting	19	Test Blocks	61
Mounting Cups	21		
Others	22		
Grinding	25		
Plane Grinding	26		
MD Grinding	27		
Diamond Pads	29		
Grinding Paper	30		
Polishing	35		
Abrasive Film	36		
MD-Polishing Cloths	36		
DP/OP-Polishing Cloths	38		
Diamond Products	40		
Lubricants	44		
Final Polishing	44		
Miscellaneous	47		
Controlled Material Removal	48		
Electrolytes	48		
Non-Destructive Testing	49		
Mineralogy	51		
General Purpose	52		

Hazardous goods

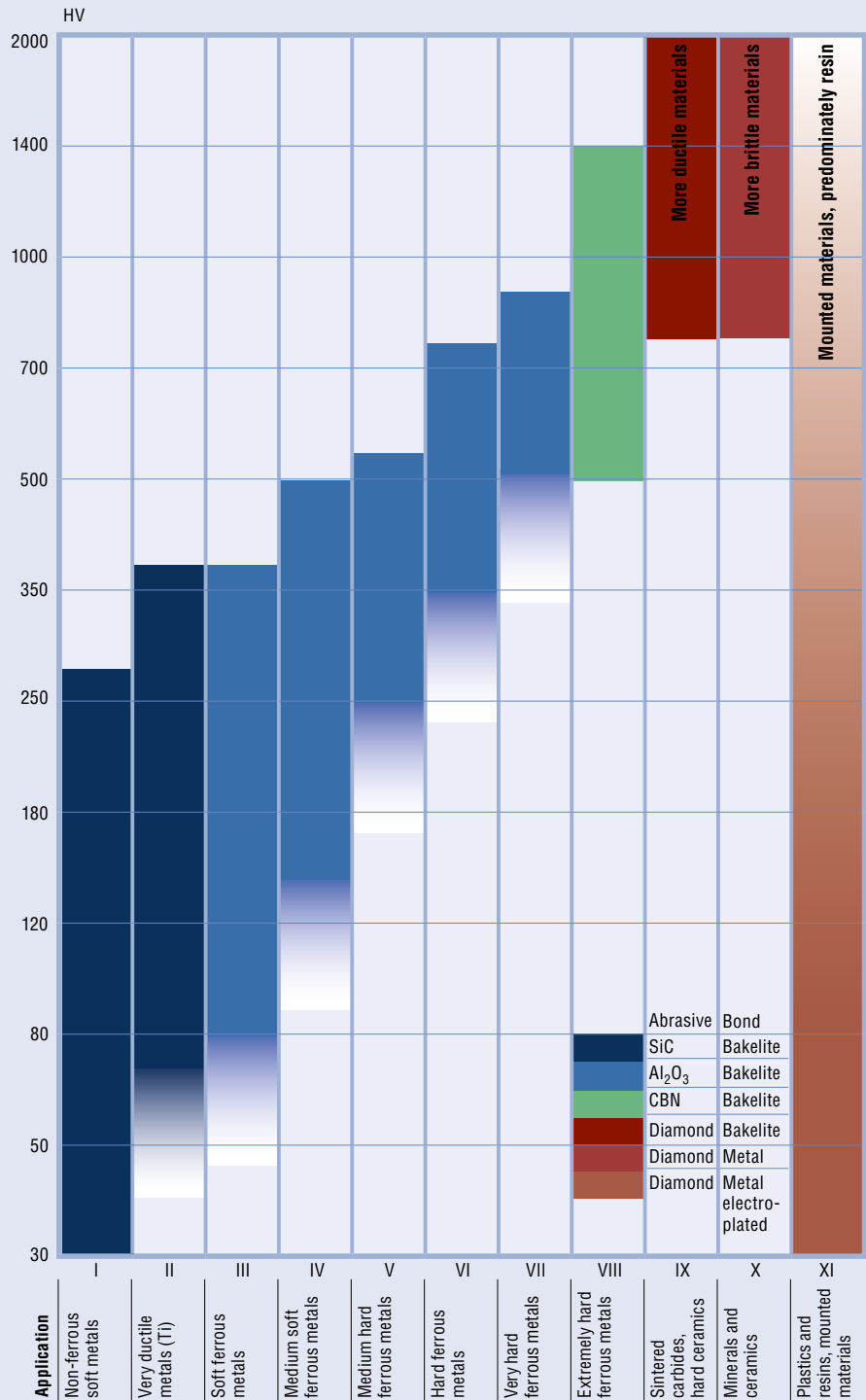
*Hazardous goods fee pr. shipment,
products marked with ***.*

To select the correct cut-off wheel:

Struers offers a wide variety of wheels, which means that you can select the hardness that optimally balances durability with finish.

If the hardness of the material is known, use the table at the top of the page. In the table at the bottom, you will then find the cut-off wheel codes for the specific cutting machines. If the hardness of the material is not known, find a suitable cut-off wheel according to material group in the table below.

- Go upwards on the y-axis of the overview to the right until you find the hardness value of your material.
- Move to the right, until you cross the cut-off wheel that fits your application. If you only have one material to cut, find the wheel where your material's hardness is placed as close to the middle as possible. For two or more materials, see if you can find a wheel that covers the whole hardness range. The bars that fade out at the bottom represent wheels that can be used for lower hardness also. However, this is not a very economical solution, and it should only be used in exceptional cases.
- Find the number (I-XI) of the respective wheel, and see the table below for the code of the correct wheel for your cut-off machine.



Cut-off machine	Std. wheel size* (mm)	I	II	III	IV	V	VI	VII	VIII	IX	X	XI	
Magnutom-500	508 x 3.5 x 32	10S51				30A51	40A51 42A51 ¹⁰	50A51 52A51 ¹⁰	60A51 62A51 ¹⁰	BOC41 ¹	BOD51 ¹⁷	MOD51 ¹⁶	EOD36 ³
Exotom-100/-150 Magnutom-400	432 x 3.0 x 32	10S43	20S43			30A43	40A43 42A43 ¹⁰	50A43 52A43 ¹⁰ 58A43 ¹⁸	60A43 62A43 ¹⁰ 66A43 ¹² 68A43 ¹⁸	BOC41 ¹	BOD35 ²	MOD35 ²	EOD36 ³
Axilotom-5 (1,950 rpm)	350 x 2.5 x 32	10S35	20S35	20A35	20A35	30A35	40A35	50A35 56A35 ¹² 58A35 ¹⁸	60A35 66A35 ¹² 68A35 ¹⁸	BOC35 ⁴	BOD35 ² B7D35 ^{2/15}	MOD35 ²	EOD36 ³
Labotom-15 (2,350 rpm)		10S35	20S35	30A35	40A35	50A35 56A35 ¹²	60A35 66A35 ¹²	60A35 66A35 ¹²	BOC35 ⁴	BOD35 ² B7D35 ^{2/15}	MOD35 ²	EOD36 ³	
Exotom/Unitom-2/-5/-50 (2,775 rpm)		10S35	30S35	20A35	30A35	40A35	50A35 56A35 ¹² 58A35 ¹⁸	60A35 66A35 ¹² 68A43 ¹⁸	BOC35 ⁴	BOD35 ² B7D35 ^{2/15}	MOD35 ²	EOD36 ³	
Unitom/Discotom-50/-60/-65/-100	300 x 2.0 x 32	10S30	20S30		30A30	40A30	50A30	60A30 66A30 ¹²	BOC31 ⁴	BOD31 ⁴	MOD31 ⁵	EOD31 ⁵	
Discotom-5/-6/-10/Labotom-3/-5	250 x 1.5 x 32	10S25	20S25	20A25	30A25 33A25 ⁹	40A25 46A25 ¹²	54A25 50A25 ¹¹ 56A25 ¹²	60A25 66A25 ¹²	BOC25 ⁷	BOD25 ⁸	MOD25 ⁸	EOD25	
Discotom/Labotom	235 x 1.5 x 22	10S24	20S24		30A24	40A24	50A24	60A24					
Discoplan-TS	200 x 1.0 x 22									B4D20	M4D20		

1) 406 x 1.8 x 32 2) 350 x 1.5 x 32 3) 356 x 1.5 x 32 4) 305 x 1.8 x 32 5) 305 x 1.5 x 32 6) 350 x 1.8 x 32 7) Width = 1.3 8) Width = 1.1 9) Width = 0.8 10) Fibreglass reinforced
11) For hard and ductile materials, Ni-base alloys 12) 3D cut-off wheels 13) Width=0.6 14) Width=0.4 15) For sintered carbides in steel 16) Width = 2.4 17) Width = 3.2 18) Premium cut-off wheels

Precision cut-off machine	Std. wheel size* (mm)	I	II	III	IV	V	VI	VII	VIII	IX	X	XI	
Secotom-1/-10/-15/-50**	200 x 0.8 x 22	10S20	10S20	30A20	30A20	50A20	50A20	50A20	50A20	BOC20	BOD20	MOD20 ¹³ M1D20 ¹³	E1D20
Accutom-10/-100/-5/-50	150 x 0.5 x 12.7	10S15 SAW13	10S15	40A15 30A15	40A15 30A15	50A15	50A15	50A15	50A15	BOC15	BOD15	MOD15 M1D15	EOD15 SAW13
Accutom-2	125 x 0.5 x 12.7	30A13	30A13	30A13	30A13	50A13	50A13	50A13	50A13	BOC13	BOD13 ¹³	MOD13 ¹⁴ M1D13 ¹⁴	M1D13 ¹⁴
Minitom	125 x 0.5 x 12.7	M1D13 ¹⁴	M1D13 ¹⁴	BOC13 ¹³	BOC13 ¹³	BOC13 ¹³	BOC13 ¹³	BOC13 ¹³	BOC13 ¹³	BOC13 ¹³	BOD13 ¹³	MOD13 ¹⁴ M1D13 ¹⁴	M1D13 ¹⁴
Wheels with special sizes	100 x 0.3 x 12.7	These wheels can be used on both Accutom-2/-100/-50 and Secotom-1/-10/-15/-50 for cutting of small specimens where high precision or minimum material loss is required.									MOD10 M1D10	M1D10	
	75 x 0.15 x 12.7	*) Diameter x Width x Bore in mm, **) On Secotom-1 only use MOD20 + BOD20									MOD08 M1D08	M1D08	



Cutting

At Struers we are committed to making your cutting as easy, fast and precise as possible.

Perfect materialographic cutting requires precision without overheating or material deformation, usually combined with speed. The cut-off machine and cut-off wheel must match the geometries and composition of the specimens. The hardness and ductility of the material influence the choice of cut-off wheel.

Intelligent cut-off wheels

Struers cut-off wheels have an abrasive density that varies across the wheel radius, with increasing density towards the centre of the wheel. This means that the cutting performance of the wheel remains constant even as it wears into a smaller diameter.

3D cut-off wheels

Struers cut-off wheels with a hexagonal surface are an addition to our standard line of cut-off wheels. The 3D wheels reduce heat damage with more efficient cooling. In addition the 3D surface eliminates the problem of cutting debris building up during cutting, which means that the cutting table and the entire cutting chamber stay clean as the small particles are easily washed away.

Cutting

508 mm Abrasive Cut-off Wheels

Cut-off Wheel 10S51

For cutting of soft, non-ferrous metals (HV 30 - 300). Silicon carbide. Resin bond

40009160 508 mm (20") dia. x 3.5 mm x 32 mm dia. 3 pcs.

Cut-off Wheel 30A51

For cutting of medium soft ferrous metals (<HV 300). Aluminium oxide. Resin bond

40009161 508 mm (20") dia. x 3.5 mm x 32 mm dia. 3 pcs.

Cut-off Wheel 40A51

For cutting of medium hard ferrous metals (HV 200 - 500), stainless steel and softer ferrous metals with diameters above 150 mm. Aluminium oxide. Resin bond.

40009162 508 mm (20") dia. x 3.5 mm x 32 mm dia. 3 pcs.

Cut-off Wheel 42A51

For cutting of medium hard ferrous metals (HV 200-500), stainless steel and softer ferrous metals with diameters above 150 mm. Aluminium oxide. Resin bond. Fibre-glass reinforced.

40009163 508 mm (20") dia. x 3.5 mm x 32 mm dia. 3 pcs.

Cut-off Wheel 50A51

For cutting of hard ferrous metals (HV 450 - 600). Aluminium oxide. Resin bond

40009164 508 mm (20") dia. x 3.5 mm x 32 mm dia. 3 pcs.

Cut-off Wheel 52A51

For cutting of hard ferrous metals (HV 450 - 600) Aluminium oxide. Resin bond. Fibre-glass reinforced.

40009165 508 mm (20") dia. x 3.5 mm x 32 mm dia. 3 pcs.

Cut-off Wheel 60A51

For cutting of extra hard ferrous metals (>HV 600). Aluminium oxide. Resin bond

40009166 508 mm (20") dia. x 3.5 mm x 32 mm dia. 3 pcs.

Cut-off Wheel 62A51

For cutting of extra hard ferrous metals (>HV 600). Aluminium oxide. Resin bond. Fibre-glass reinforced.

40009167 508 mm (20") dia. x 3.5 mm x 32 mm dia. 3 pcs.

432 mm Abrasive Cut-off Wheels

Cut-off Wheel 10S43

For cutting of soft, non-ferrous metals (HV 30 - 300). Silicon carbide. Resin bond

40009150 432 mm (17") dia. x 3.0 mm x 32 mm dia. 5 pcs.

Cut-off Wheel 20S43

For cutting of very ductile metals (e.g. titanium) (HV 70 - 400). Silicon carbide. Resin bond

40009170 432 mm (17") dia. x 3.0 mm x 32 mm dia. 5 pcs.

Cut-off Wheel 30A43

For cutting of medium soft ferrous metals (< HV 300) and for general applications. Aluminium oxide. Resin bond

40009151 432 mm (17") dia. x 3.0 mm x 32 mm dia. 5 pcs.

Cut-off Wheel 40A43

For cutting of medium hard ferrous metals (HV 200 - 500), stainless steel and general applications. Aluminium oxide. Resin bond

40009152 432 mm (17") dia. x 3.0 mm x 32 mm dia. 5 pcs.

Cut-off Wheel 42A43

For cutting of case hardened and medium hard ferrous metals (HV 200 - 700), and for stainless steel. Fibre-reinforced. Aluminium oxide. Resin bond

40009158 432 mm (17") dia. x 3.0 mm x 32 mm dia. 5 pcs.

Cut-off Wheel 50A43

For cutting of hard ferrous metals (HV 450 - 600). Aluminium oxide. Resin bond

40009153 432 mm (17") dia. x 3.0 mm x 32 mm dia. 5 pcs.





Cut-off Wheel 52A43
For cutting of hard ferrous metals (HV 450 - 600).
Fibre-reinforced. Aluminium oxide. Resin bond

40009154 432 mm (17") dia. x 3.0 mm x 32 mm dia. 5 pcs.

Cut-off Wheel, Premium 58A43

For high volume cutting of hard ferrous metals (HV 450-600).
With spiral pattern. Aluminium oxide. Resin bond.

40009174 432 mm (17") dia. x 2.7 mm x 32 mm dia. 5 pcs.

Cut-off Wheel 60A43

For cutting of extra hard ferrous metals (> HV 600).
Aluminium oxide. Resin bond

40009155 432 mm (17") dia. x 3.0 mm x 32 mm dia. 5 pcs.

Cut-off Wheel 62A43

For cutting of extra hard ferrous metals (> HV 600).
Fibre-reinforced. Aluminium oxide. Resin bond

40009156 432 mm (17") dia. x 3.0 mm x 32 mm dia. 5 pcs.

Cut-off Wheel, Hexagonal 66A43

For cutting of extra hard ferrous metals (> HV 600).
With 3-D hexagon pattern. Aluminium oxide. Resin bond

40009159 432 mm (17") dia. x 3.0 mm x 32 mm dia. 5 pcs.

Cut-off Wheel, Premium 68A43

For high volume cutting of very hard ferrous metals (HV >600).
With spiral pattern. Aluminium oxide. Resin bond.

40009175 432 mm (17") dia. x 2.7 mm x 32 mm dia. 5 pcs.



350 mm Abrasive Cut-off Wheels

Cut-off Wheel 10S35

For cutting of soft, non-ferrous metals (HV 30 - 300) on Unitom
(2.775 rpm), Axitom (1.950 rpm) and Labotom-15 (2.350 rpm).
Silicon carbide. Resin bond

40009120 350 mm (14") dia. x 2.5 mm x 32 mm dia. 10 pcs.

Cut-off Wheel 20S35

For cutting of very ductile metals (e.g. titanium) (HV 70 - 400) on
Axitom (1.950 rpm) and Labotom-15 (2.350 rpm).
Silicon carbide. Resin bond.

40009121 350 mm (14") dia. x 2.5 mm x 32 mm dia. 10 pcs.

Cut-off Wheel 30S35

For cutting of very ductile metals (e.g. titanium) (HV 70 - 400) on Unitom
(2.775 rpm). Silicon carbide. Resin bond.

40009122 350 mm (14") dia. x 2.5 mm x 32 mm dia. 10 pcs.

Cut-off Wheel 20A35

For cutting of soft ferrous metals, steel tubes and small pieces (HV 80 -
400) on Unitom (2.775 rpm) and Axitom (1.950 rpm), and for cutting of
medium soft ferrous metals (<HV 300) and for general applications on
Axitom (1.950 rpm). Aluminium oxide. Resin bond

40009123 350 mm (14") dia. x 2.5 mm x 32 mm dia. 10 pcs.

Cut-off Wheel 30A35

For cutting of soft ferrous metals, steel tubes and small pieces (HV 80 -
400) on Labotom-15 (2.350 rpm). For cutting of medium soft ferrous
metals (<HV 300) on Unitom (2.775 rpm). For cutting of medium hard
ferrous metals (HV 200 - 500) and stainless steel on Axitom (1.950 rpm).
Aluminium oxide. Resin bond.

40009124 350 mm (14") dia. x 2.5 mm x 32 mm dia. 10 pcs.

Cut-off Wheel 40A35

For cutting of medium soft ferrous metals (<HV 300) on Labotom-15
(2.350 rpm). For cutting of medium hard ferrous metals (HV 200 - 500) and
stainless steel on Unitom (2.775 rpm). For cutting of hard ferrous metals
(HV 300 - 700) on Axitom (1.950 rpm). Aluminium oxide. Resin bond.

40009125 350 mm (14") dia. x 2.5 mm x 32 mm dia. 10 pcs.

Cut-off Wheel 50A35

For cutting of medium hard ferrous metals (HV 200 - 500) and stainless
steel on Labotom-15 (2.350 rpm). For cutting of hard ferrous metals
(HV 300 - 700) on Unitom (2.775 rpm). For cutting of very hard ferrous
metals (HV 400 - 800) on Axitom (1.950 rpm). Aluminium oxide. Resin bond.

40009126 350 mm (14") dia. x 2.5 mm x 32 mm dia. 10 pcs.



Cut-off Wheel, Premium 58A35
 For cutting of hard ferrous metals (HV 300 - 700) on Unitom (2.775 rpm).
 For cutting of very hard ferrous metals (HV 400 - 800) on Axitom
 (1.950 rpm). Suitable for high volume cutting. With spiral pattern.
 Aluminium oxide. Resin bond.

40009172 350 mm (14") dia. x 2.2 mm x 32 mm dia. 10 pcs

Cut-off Wheel 55A35

For cutting of hard ferrous metals (HV 300 - 700) on Unitom (2.775 rpm) and for cutting of extra hard ferrous metals (HV 400 - 800) on Axitom (1.950 rpm). Special cut-off wheel for cutting of 3 mm wide slots. Aluminium oxide. Resin bond

40009168 350 mm (14") dia. x 3 mm x 32 mm dia. 8 pcs.

Cut-off Wheel 60A35

For cutting of hard ferrous metals (HV 300 - 700) on Labotom-15 (2.350 rpm). For cutting of very hard ferrous metals (HV 400 - 800) on Unitom (2.775 rpm) and Labotom-15 (2.350 rpm). Aluminium oxide. Resin bond.

40009128 350 mm (14") dia. x 2.5 mm x 32 mm dia. 10 pcs.

Cut-off Wheel, Hexagonal 56A35

For cutting of medium hard ferrous metals (HV 200 - 500) and stainless steel on Labotom-15 (2.350 rpm). For cutting of hard ferrous metals (HV 300 - 700) on Unitom (2.775 rpm). For cutting of very hard ferrous metals (HV 400 - 800) on Axitom (1.950 rpm). With 3-D hexagon pattern. Aluminium oxide. Resin bond.

40009127 350 mm (14") dia. x 2.5 mm x 32 mm dia. 10 pcs.

Cut-off Wheel, Premium 68A35

For cutting of very hard ferrous metals (HV 400 - 800) on Unitom (2.775 rpm) and Labotom-15 (2,350 rpm). Suitable for high volume cutting. With spiral pattern. Aluminium oxide. Resin bond.

40009173 350 mm (14") dia. x 2.2 mm x 32 mm dia. 10 pcs

Cut-off Wheel, Hexagonal 66A35

For cutting of hard ferrous metals (HV 300 - 700) on Labotom-15 (2.350 rpm). For cutting of very hard ferrous metals (HV 400 - 800) on Unitom (2.775 rpm) and Labotom-15 (2.350 rpm). With 3-D hexagon pattern. Aluminium oxide. Resin bond.

40009129 350 mm (14") dia. x 2.5 mm x 32 mm dia. 10 pcs.



300 mm Abrasive Cut-off Wheels

Cut-off Wheel 10S30

For cutting of soft, non-ferrous metals (HV 30 - 300). Silicon carbide. Resin bond.

40009140 300 mm (12") dia. x 2.0 mm x 32 mm dia. 10 pcs.

Cut-off Wheel 20S30

For cutting of very ductile metals (e.g. titanium) (HV 70 - 400). Silicon carbide. Resin bond.

40009141 300 mm (12") dia. x 2.0 mm x 32 mm dia. 10 pcs.

Cut-off Wheel 30A30

For cutting of medium soft ferrous metals (<HV 300) and for general applications. Aluminium oxide. Resin bond

40009142 300 mm (12") dia. x 2.0 mm x 32 mm dia. 10 pcs.

Cut-off Wheel 40A30

For cutting of medium hard ferrous metals (HV 200 - 500), stainless steel and general applications. Aluminium oxide. Resin bond.

40009143 300 mm (12") dia. x 2.0 mm x 32 mm dia. 10 pcs.

Cut-off Wheel 50A30

For cutting of hard ferrous metals (HV 450 - 600) and for softer ferrous metals with diameters above 60 mm. Aluminium oxide. Resin bond.

40009144 300 mm (12") dia. x 2.0 mm x 32 mm dia. 10 pcs.

Cut-off Wheel 60A30

For cutting of extra hard ferrous metals (>HV 600). Aluminium oxide. Resin bond.

40009145 300 mm (12") dia. x 2.0 mm x 32 mm dia. 10 pcs.

Cut-off Wheel, Hexagonal 66A30

For cutting of extra hard ferrous metals (>HV 600). With 3-D hexagon pattern. Aluminium oxide. Resin bond.

40009146 300 mm (12") dia. x 2.0 mm x 32 mm dia. 10 pcs.



250 mm Abrasive Cut-off Wheels

	<p>Cut-off Wheel 10S25 For cutting of soft, non-ferrous metals (HV 30 - 300). Silicon carbide. Resin bond.</p>
40009101	250 mm (10") dia. x 1.5 mm x 32 mm dia. 10 pcs.
	<p>Cut-off Wheel 20S25 For cutting of very ductile metals (e.g. titanium) (HV 70 - 400). Silicon carbide. Resin bond.</p>
40009102	250 mm (10") dia. x 1.5 mm x 32 mm dia. 10 pcs.
	<p>Cut-off Wheel 20A25 For cutting of soft ferrous metals, steel tubes and small pieces (HV 80 - 400). Aluminium oxide. Resin bond.</p>
40009103	250 mm (10") dia. x 1.5 mm x 32 mm dia. 10 pcs.
	<p>Cut-off Wheel 30A25 For cutting of medium soft ferrous metals (<HV 300) and for general applications. Aluminium oxide. Resin bond.</p>
40009104	250 mm (10") dia. x 1.5 mm x 32 mm dia. 10 pcs.
	<p>Cut-off Wheel 33A25 Thin (0.8 mm) cut-off wheel for delicate cutting of medium soft ferrous metals (<HV 300). Aluminium oxide. Resin bond.</p>
40009105	250 mm (10") dia. x 0.8 mm x 32 mm dia. 10 pcs.
	<p>Cut-off Wheel 40A25 For cutting of medium hard ferrous metals (HV 300 - 450) and for general applications. Aluminium oxide. Resin bond</p>
40009106	250 mm (10") dia. x 1.5 mm x 32 mm dia. 10 pcs.
	<p>Cut-off Wheel 50A25 For cutting of hard and ductile ferrous metals and Ni-based alloys (HV 450 - 600). Aluminium oxide. Resin bond.</p>
40009108	250 mm (10") dia. x 1.5 mm x 32 mm dia. 10 pcs.
	<p>Cut-off Wheel, 55A25 For cutting of hard and ductile ferrous metals and Ni-based alloys (HV 450 - 600). Special cut-off wheel for cutting of 3 mm wide slots. Aluminium oxide. Resin bond.</p>
40009171	250 mm (10") dia. x 3 mm x 32 mm dia. 5 pcs.
	<p>Cut-off Wheel 54A25 For cutting of hard ferrous metals (HV 450 – 600) and for softer ferrous metals with diameters above 50 mm (2"). Well suited for manual cutting. Aluminium oxide. Resin bond.</p>
40009112	250 mm (10") dia. x 1.5 mm x 32 mm dia. 10 pcs.
	<p>Cut-off Wheel 60A25 For cutting of extra hard ferrous metals (>HV 600). Aluminium oxide. Resin bond.</p>
40009110	250 mm (10") dia. x 1.5 mm x 32 mm dia. 10 pcs.
	<p>Cut-off Wheel, Hexagonal 46A25 For cutting of medium hard ferrous metals (HV 200 - 500), stainless steel and general applications. With 3D hexagon pattern. Aluminium oxide. Resin bond.</p>
40009107	250 mm (10") dia. x 1.5 mm x 32 mm dia. 10 pcs.
	<p>Cut-off Wheel, Hexagonal 56A25 For cutting of hard ferrous metals (HV 450 - 600) and for softer ferrous metals with diameters above 50 mm (2"). With 3D hexagon pattern. Aluminium oxide. Resin bond.</p>
40009109	250 mm (10") dia. x 1.5 mm x 32 mm dia. 10 pcs.
	<p>Cut-off Wheel, Hexagonal 66A25 For cutting of extra hard ferrous metals (>HV 600). With 3D hexagon pattern. Aluminium oxide. Resin bond.</p>
40009111	250 mm (10") dia. x 1.5 mm x 32 mm dia. 10 pcs.

235 mm Abrasive Cut-off Wheels

	Cut-off Wheel 10S24 For cutting of soft, non-ferrous metals (HV 30 - 300). Silicon carbide. Resin bond.
40009134	235 mm (9") dia. x 1.5 mm x 22 mm dia. 10 pcs.
	Cut-off Wheel 20S24 For cutting of very ductile metals (e.g. titanium) (HV 70 - 400). Silicon carbide. Resin bond.
40009135	235 mm (9") dia. x 1.5 mm x 22 mm dia. 10 pcs.
	Cut-off Wheel 30A24 For cutting of medium soft ferrous metals (<HV 300) and for general applications. Aluminium oxide. Resin bond.
40009133	235 mm (9") dia. x 1.5 mm x 22 mm dia. 10 pcs.
	Cut-off Wheel 40A24 For cutting of medium hard ferrous metals (HV 200 - 500), stainless steel and general applications. Aluminium oxide. Resin bond.
40009132	235 mm (9") dia. x 1.5 mm x 22 mm dia. 10 pcs.
	Cut-off Wheel 50A24 For cutting of hard ferrous metals (HV 450 - 600) and for softer ferrous metals with diameters above 50 mm (2"). Aluminium oxide. Resin bond.
40009131	235 mm (9") dia. x 1.5 mm x 22 mm dia. 10 pcs.
	Cut-off Wheel 60A24 For cutting of extra hard ferrous metals (>HV 600). Aluminium oxide. Resin bond.
40009130	235 mm (9") dia. x 1.5 mm x 22 mm dia. 10 pcs.

200 mm Abrasive Cut-off Wheels

	Cut-off Wheel 10S20 For cutting of soft non-ferrous metals (HV 70 - 400). For Secotom-10/-15/-50. SiC. Resin bond.
40000092	203 mm (8") dia. x 0.8 mm x 22 mm dia. 5 pcs.
	Cut-off Wheel 30A20 For cutting of medium hard ferrous metals (< HV 500). For Secotom-10/-15/-50. Aluminium oxide. Resin bond.
40000087	200 mm (8") dia. x 0.8 mm x 22 mm dia. 5 pcs.
	Cut-off Wheel 50A20 For cutting of hard ferrous metals (> HV 500). For Secotom-10/-15/-50. Aluminium oxide. Resin bond.
40000086	200 mm (8") dia. x 0.8 mm x 22 mm dia. 5 pcs.

Abrasive Precision Cut-off Wheels

	Cut-off Wheel 10S15 For cutting of soft non-ferrous metals (HV 70 - 400). For Secotom-10/-15/-50, Accutom-100/-10 and Accutom-50/-5. SiC. Resin bond
40000061	150 mm (6") dia. x 0.5 mm x 12.7 mm dia. 5 pcs.
	Cut-off Wheel 30A15 Universal type for cutting of medium hard ferrous metals (HV 250 - 800) with relatively large dimensions. For Secotom-10/-15/-50, Accutom-100/-10 and Accutom-50/-5. Aluminium oxide. Resin bond
40000067	150 mm (6") dia. x 0.5 mm x 12.7 mm dia. 5 pcs.
	Cut-off Wheel 40A15 For cutting of medium hard ferrous metals (< HV 500). For Secotom-10/-15/-50, Accutom-100/-10 and Accutom-50/-5. Aluminium oxide. Resin bond
40000056	150 mm (6") dia. x 0.5 mm x 12.7 mm dia. 5 pcs.
	Cut-off Wheel 50A15 For cutting of hard ferrous metals (HV 500 - 800). For Secotom-10/-15/-50, Accutom-100/-10 and Accutom-50/-5. Aluminium oxide. Resin bond
40000060	150 mm (6") dia. x 0.5 mm x 12.7 mm dia. 5 pcs.

Cut-off Wheel 30A13

For cutting of medium hard ferrous metals (< HV 500). For Secotom-10/-15/-50, Accutom-100/-10, Accutom-50/-5, Accutom-2 and Accutom. Aluminium oxide. Resin bond

40000045 125 mm (5") dia. x 0.5 mm x 12.7 mm dia. 5 pcs.

Cut-off Wheel 50A13

For cutting of hard ferrous metals (> HV 500). For Secotom-10/-15/-50, Accutom-100/-10, Accutom-50/-5, Accutom-2 and Accutom. Aluminium oxide. Resin bond

40000044 125 mm (5") dia. x 0.5 mm x 12.7 mm dia. 5 pcs.

Diamond / CBN Cut-off Wheels**Diamond Cut-off Wheel M0D51**

For cutting of ceramics (> HV 800) and minerals. Metal bond, high concentration

40000095 508 mm (20") dia. x 2.4 mm x 32 mm dia.

Diamond Cut-off Wheel B0D51

For cutting of sintered carbides and ceramics (> HV 800). Resin bond

40000094 508 mm (20") dia. x 3.2 mm x 32 mm dia.

Diamond Cut-off Wheel M0D35

For cutting of ceramics (> HV 800) and minerals. Metal bond, high concentration

40000077 350 mm (14") dia. x 1.5 mm x 32 mm dia.

Diamond Cut-off Wheel B0D35

For cutting of sintered carbides and ceramics (> HV 800). Resin bond

40000036 350 mm (14") dia. x 1.5 mm x 32 mm dia.

Diamond Cut-off Wheel B7D35

For cutting of drilling tools containing steel and sintered carbides. Resin bond.

40000093 350 mm (14") dia. x 1.5 mm x 32 mm dia.

Diamond Cut-off Wheel E0D36

For cutting of mounted specimens and components containing resin or plastic. Electroplated

40000082 356 mm (14") dia. x 1.5 mm x 32 mm dia.

Diamond Cut-off Wheel M0D31

For cutting of ceramics (> HV 800) and minerals. Metal bond, high concentration

40000075 305 mm (12") dia. x 1.5 mm x 32 mm dia.

Diamond Cut-off Wheel B0D31

For cutting of sintered carbides and ceramics (> HV 800). Resin bond

40000035 305 mm (12") dia. x 1.8 mm x 32 mm dia.

Diamond Cut-off Wheel E0D30

For cutting of mounted samples and components containing resin or plastic. Electroplated

40000081 300 mm (12") dia. x 1.5 mm x 32 mm dia.

Diamond Cut-off Wheel M0D25

For cutting of ceramics (> HV 800) and minerals. Metal bond, high concentration

40000034 250 mm (10") dia. x 1.1 mm x 32 mm dia.

Diamond Cut-off Wheel B0D25

For cutting of sintered carbides and ceramics (> HV 800). Resin bond

40000033 254 mm (10") dia. x 1.1 mm x 32 mm dia.

Diamond Cut-off Wheel E0D25

For cutting of mounted samples and components containing resin or plastic. Electroplated

40000080 250 mm (10") dia. x 1.5 mm x 32 mm dia.



Diamond Cut-off Wheel M4D20

For manual cutting of minerals and composites with hard phases.
For Discoplan-TS, manual cutting table on Secotom-10 or Secotom-1.
Metal bond, high concentration

40000029 202 mm (8") dia. x 1.0 mm x 22 mm dia.

Diamond Cut-off Wheel B4D20

For manual cutting of sintered carbides and ceramics (> HV 800).
For Discoplan-TS. Resin bond

40000032 202 mm (8") dia. x 1.1 mm x 22 mm dia.

CBN Cut-off Wheel B0C41

For cutting of extremely hard ferrous metals (HV 500 - 1400).
Resin bond, high concentration

40000079 406 mm (16") dia. x 1.8 mm x 32 mm dia.

CBN Cut-off Wheel B0C35

For cutting of extremely hard ferrous metals (HV 500 - 1400).
Resin bond, high concentration

40000078 350 mm (14") dia. x 1.8 mm x 32 mm dia.

CBN Cut-off Wheel B0C31

For cutting of extremely hard ferrous metals (HV 500 - 1400).
Resin bond, high concentration

40000076 305 mm (12") dia. x 1.8 mm x 32 mm dia.

CBN Cut-off Wheel B0C25

For cutting of extremely hard ferrous metals (HV 500 - 1400).
Resin bond, high concentration

40000018 252 mm (10") dia. x 1.3 mm x 32 mm dia.

Diamond / CBN Precision Cut-off Wheels**Diamond Cut-off Wheel M0D20**

For cutting of ceramics and minerals (> HV 800). Can be used with
manual cutting table. For Secotom-1/-10/-15/-50. Metal bond, high
concentration

40000084 203 mm (8") dia. x 0.6 mm x 22 mm dia.

Diamond Cut-off Wheel M1D20

For cutting of hard and brittle materials. Can be used with manual cutting
table. For Secotom-1/-10/-15/-50. Metal bond, low concentration

40000072 203 mm (8") dia. x 0.6 mm x 22 mm dia.

Diamond Cut-off Wheel B0D20

For cutting of sintered carbides and ceramics (> HV 800).
For Secotom-10/-15/-50. Resin bond

40000083 203 mm (8") dia. x 0.9 mm x 22 mm dia.

Diamond Cut-off Wheel E1D20

For cutting of mounted samples and components containing resin or
plastic. For Secotom-10/-15/-50. Electroplated, single-layer

40000090 200 mm (8") dia. x 0.8 mm x 22 mm dia.

Diamond Cut-off Wheel M4D18

For manual cutting of minerals and composites with hard phases.
For Accutom-2 and Accutom with manual cutting table.
Metal bond, high concentration

40000046 176 mm (7") dia. x 0.8 mm x 12.7 mm dia.

Diamond Cut-off Wheel M0D15

For cutting of ceramics and minerals (> HV 800). For Secotom-10/-15/-50,
Accutom-100/-10 and Accutom-50/-5. Metal bond, high concentration

40000054 152 mm (6") dia. x 0.4 mm x 12.7 mm dia.

Diamond Cut-off Wheel M1D15

For cutting of hard and brittle materials. For Secotom-10/-15/-50,
Accutom-100/-10 and Accutom-50/-5. Metal bond, low concentration

40000068 152 mm (6") dia. x 0.4 mm x 12.7 mm dia.



40000055	<p>Diamond Cut-off Wheel B0D15 For cutting of sintered carbides and ceramics (> HV 800). For Secotom-10/-15/-50, Accutom-100/-10 and Accutom-50/-5. Resin bond</p> <p>152 mm (6") dia. x 0.8 mm x 12.7 mm dia.</p>
40000089	<p>Diamond Cut-off Wheel E0D15 For cutting of mounted specimens and components containing resin or plastic. For Secotom-10/-15/-50, Accutom-100/-10 and Accutom-50/-5. Electroplated, multi-layer.</p> <p>150 mm (6") dia. x 0.4 mm x 12.7 mm dia.</p>
40000038	<p>Diamond Cut-off Wheel M0D13 For cutting of ceramics and minerals (> HV 800). For Secotom-10/-15/-50, Accutom-100/-10, Accutom-50/-5, Accutom-2, Accutom and Minitom. Metal bond, high concentration</p> <p>127 mm (5") dia. x 0.4 mm x 12.7 mm dia.</p>
40000071	<p>Diamond Cut-off Wheel M1D13 For cutting of hard and brittle materials. For Secotom-10/-15/-50, Accutom-100/-10, Accutom-50/-5, Accutom-2, Accutom and Minitom. Metal bond, low concentration</p> <p>127 mm (5") dia. x 0.4 mm x 12.7 mm dia.</p>
40000039	<p>Diamond Cut-off Wheel B0D13 For cutting of sintered carbides and ceramics (> HV 800). For Secotom-10/-15/-50, Accutom-100/-10, Accutom-50/-5, Accutom-2, Accutom and Minitom. Resin bond</p> <p>127 mm (5") dia. x 0.6 mm x 12.7 mm dia.</p>
40000043	<p>Diamond Cut-off Wheel M0D10 For precision cutting of ceramics and minerals. For Secotom-10/-15/-50, Accutom-100/-10, Accutom-50/-5, Accutom-2, Accutom and Minitom. Metal bond, high concentration</p> <p>102 mm (4") dia. x 0.3 mm x 12.7 mm dia.</p>
40000070	<p>Diamond Cut-off Wheel M1D10 For cutting of hard and brittle materials. For Secotom-10/-15/-50, Accutom-100/-10, Accutom-50/-5, Accutom-2, Accutom and Minitom. Metal bond, low concentration</p> <p>102 mm (4") dia. x 0.3 mm x 12.7 mm dia.</p>
40000041	<p>Diamond Cut-off Wheel M0D08 For high precision cutting of very small specimens. Mainly recommended for ceramics and minerals. For Secotom-10/-15/-50, Accutom-100/-10, Accutom-50/-5, Accutom-2 and Accutom. Metal bond, high concentration</p> <p>76 mm (3") dia. x 0.15 mm x 12.7 mm dia.</p>
40000069	<p>Diamond Cut-off Wheel M1D08 For cutting of hard and brittle materials. For Secotom-10/-15/-50, Accutom-100/-10, Accutom-50/-5, Accutom-2 and Accutom. Metal bond, low concentration</p> <p>76 mm (3") dia. x 0.15 mm x 12.7 mm dia.</p>
40000074	<p>CBN Cut-off Wheel B0C20 For cutting of extremely hard ferrous metals (HV 500 - 1400). For Secotom-10/-15/-50. Resin bond, high concentration</p> <p>203 mm (8") dia. x 0.9 mm x 22 mm dia.</p>
40000073	<p>CBN Cut-off Wheel B0C15 For cutting of extremely hard ferrous metals (HV 500 - 1400). For Secotom-10/-15/-50, Accutom-100/-10 and Accutom-50/-5. Resin bond, high concentration</p> <p>152 mm (6") dia. x 0.8 mm x 12.7 mm dia.</p>
40000040	<p>CBN Cut-off Wheel B0C13 For cutting of extremely hard ferrous metals (HV 500 - 1400). For Secotom-10/-15/-50, Accutom-100/-10, Accutom-50/-5, Accutom-2, Accutom and Minitom. Resin bond, high concentration</p> <p>127 mm (5") dia. x 0.6 mm x 12.7 mm dia.</p>



Saw Blades

Saw Blade SAW13

Toothed saw blade for cutting of plastics and very soft metals (< HV 100). For Secotom-10/-15/-50, Accutom-10/-100 and Accutom-50/-5.

40000057 125 mm (5") dia. x 0.6 mm x 12.7 mm dia.

Additive

Corrozip

To protect the machine from corrosion and to improve cutting and cooling qualities. For Recirculation Cooling Unit

49900045 1 l

49900046 5 l

Corrozip-Cu

Additive to recirculation cooling units especially for machines which mainly cut copper and copper alloys

49900058 1 l

49900059 5 l

Corrozip-LF

Low foaming additive to protect the machine from corrosion, and to improve cutting and cooling properties

49900038 1 l

49900039 5 l

Cutting Fluid

Water free Cutting Fluid for cutting of water-sensitive materials on Accutom-5/-50 or Secotom-10/-15/-50. Special pump tube required on Secotom-15/-50

49900030 5 l

Unitclean

For cleaning of Recirculation Cooling Units to stop attack of micro-organisms and remove unpleasant odours

49900040 *** 1 l



Others

Filter tube

Single-use filter tube for static recirculation cooling system.

49900065 Capacity: 100-150 l tanks. 10 pcs.

Filter bag for 50 l tank

05766928 Filter bag for use with 50 l tank (05766906). Stainless steel.

Disposable liner for collection bin

For collecting waste material in collection bin in front of Coolimat.

06166906 10 pcs.

Paper for Coolimat-200

Width: 500 mm. For use with Coolimat-200 bandfilter (06161116)

06166901 Roll with 500 m

Bandfilter paper, for use with band filter (057663xx). Width 45 cm

05766914 Roll with 90 m

Paper for Static Filter

For use with static filter (05766907)

05766915 For 100 l filter. 100 pcs.

05766916 For 50 l filter. 100 pcs.

Filter paper

For Accutom-10 and Accutom-100

49900060 100 pcs.

Disposable Liners

For collecting waste material in recirculation cooling unit (025361xx) with capacity 30 l.

49900001 20 pcs.

For collecting waste material in recirculation cooling unit, capacity 65 l.

49900013 10 pcs.

For collecting waste material in 50 l tank (05766906)

49900042 20 pcs.

For collecting waste material in 100/150 l tank (05766905)

49900043 20 pcs.

For collecting waste material in 200 l tank (06161X16)

49900057 5 pcs.



Selection Guide for Hot mounting

Resin	ClaroFast	CitoFast	ConduFast	DuroFast	LevoFast	PolyFast	MultiFast
Material	Acrylic	Acrylic with aluminium filler	Acrylic with iron filler	Epoxy with mineral filler	Melamine with mineral and glass filler	Bakelite with carbon filler	Bakelite with wood filler
Specific properties	Clear transparent	Very fast mounting. Low process times also when it is used as 'backing' for DuroFast or LevoFast	Electrically conductive	Very low shrinkage. Very low removal rate.	Very low shrinkage. High removal rate.	Very low shrinkage. High removal rate.	Medium shrinkage. Medium removal rate.
Recommended use	Clear mounts. Porous specimens.	Fast mounting times. For soft materials.	Electrolytic polishing.	Excellent edge-retention for hard materials.	Excellent edge-retention for soft to medium hard materials.	Fast mounting process. SEM examination.	Routine examination of soft to medium hard materials. Color coding.

Selection Guide for Cold mounting

	ACRYLICS					EPOXIES			
Material	VersoCit-2	ClaroCit	DuroCit-3	LevoCit	ViaFix	CaldoFix-2	SpeciFix-40	SpeciFix-20	EpoFix
Curing time	10 min.	20 min.	30 min.	20 min.	20 min.	1 ½ hour in oven at 75 °C / 167 °F	3 ½ hours in oven at 50 °C / 122 °F	8 hours	Approx. 12 hours
Shrinkage From 1-4 (1 is best)	****	***	*	**	***	*	*	*	*
Application	For routine examination <ul style="list-style-type: none"> Routine examination of soft to medium hard materials 	For extraordinarily clear mounts <ul style="list-style-type: none"> For universal use Target preparation 	Fast curing and no shrinkage <ul style="list-style-type: none"> For medium hard and hard ferrous metals and other hard materials – including ceramics, carbides etc. For specimens where protection of layers is important e.g. coated specimens Excellent edge-retention and planeness 	Good edge-retention and planeness <ul style="list-style-type: none"> For non-ferrous metals and soft ferrous metals Low shrinkage Low peak temperature 	For vias and microvias <ul style="list-style-type: none"> Excellent for filling of microvias. <p><i>* Affected by alcohol. When using diamond products or lubricants containing alcohol, the surface will be affected and the structure of the polymer beads will appear.</i></p>	For all-round vacuum impregnation <ul style="list-style-type: none"> Short curing time Low viscosity Relatively hard after curing 	Extremely good adhesion <ul style="list-style-type: none"> Relative fast curing time Very clear colourless mounts Cures in oven or Drybox 	For vacuum impregnation of small specimens <ul style="list-style-type: none"> Ideal for small specimens Very good adhesion Very low curing temperature 	For vacuum impregnation - low viscosity <ul style="list-style-type: none"> Can be used on all types of specimens Extremely low curing temperature – Very good for heat sensitive specimens Superior penetration of cracks and pores Excellent adhesion
Mixing ratio weight recommended	Liquid: 2 parts Powder: 3 parts	Liquid: 6 parts Powder: 10 parts	Liquid I: 8 parts Liquid II: 4 parts Powder: 14 parts	Liquid: 1 part Powder: 2 parts	Liquid: 9 parts Powder: 11 parts	Resin: 25 parts Hardener: 7 parts	Resin: 5 parts Curing Agent: 2 parts	Resin: 7 parts Curing Agent: 1 part	Resin: 25 parts Hardener: 3 parts
Mixing ratio volume	Liquid: 1 part Powder: 2 parts	Liquid: 2 parts Powder: 5 parts	Liquid I: 10 parts Liquid II: 5 parts Powder: 15 parts	Liquid: 1 part Powder: 2 parts	Liquid: 1 part Powder: 2 parts	Resin: 31 parts Hardener: 10 parts	Resin: 10.5 parts Curing Agent: 5 part	Resin: 26 parts Curing Agent: 5 part	Resin: 15 parts Hardener: 2 parts
Mixing time	30 s	1 ½ min.	1 ½ min.	45 s	30 s	5 min.	3 min.	3 min.	2 min.
Potlife	3 min.	1 ½ min.	4 min.	1 ½ min.	2 min.	> 60 min.	> 60 min.	60 min.	30 min.
Colour	Dull yellowish, partly transparent	Colourless, clear (extremely clear when cured under pressure)	Light green	Off-white	Colourless, clear (extremely clear when cured under pressure). Otherwise semi-transparent.	Clear, transparent Refractive index: ND = 1.561	Clear, transparent Refractive index: ND = 1.573	Clear, transparent Refractive index: ND = 1.573	Clear, transparent Refractive index: ND = 1.578
Can be coloured with EpoDye		X			X	X	X	X	X
Can be coloured with AcryDye	X	X	X	X	X				
Peak temperature	100 °C / 212 °F	90 °C / 194 °F	138 °C / 280 °F	75 °C / 167 °F	115 °C / 239 °F	170 °C / 338 °F	100 °C / 212 °F	60 °C / 140 °F	40 °C / 104 °F
Hardness	82 Shore D	85 Shore D	85 Shore D	84 Shore D	83 Shore D	85 Shore D	82 Shore D	84 Shore D	78 Shore D

(30 mm dia. mount without specimen at 21 °C / 70 °F)



Mounting

Struers' mounting consumables are designed to meet every materialographic application. Specimens are embedded in a resin for safer, more convenient handling and to improve the preparation result. Two different mounting techniques are available: hot mounting and cold mounting.

Hot mounting

When the preparation requirements include high preparation quality, uniform size and shape, and short process times, hot mounting is ideal. Hot mounting is carried out using a mounting press in which the specimen is placed in a cylinder together with the appropriate mounting resin.

Cold mounting

Struers cold mounting resins protect specimens from heat and pressure, while delivering a stable, secure testing specimen, and provide superior results efficiently and consistently.

Hot Mounting



ClaroFast	
	Clear transparent acrylic hot mounting resin. Thermoplastic.
40100055	1 kg
40100054	7.5 kg
40100053	25 kg



CitoFast	
	Grey acrylic hot mounting resin. Thermoplastic.
40100068	1 kg
40100069	7.5 kg



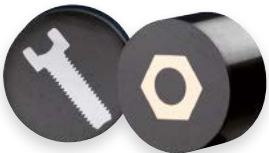
ConduFast	
	Black/Grey acrylic hot mounting resin with iron filler. Thermoplastic
40100039	1 kg



DuroFast	
	Black epoxy hot mounting resin with mineral filler, for edge-retention and planeness of hard materials. Thermosetting.
40100044	1 kg
40100045	7.5 kg



LevoFast	
	Light yellow melamine hot mounting resin with mineral and glass filler. Thermosetting.
40100057	1 kg
40100058	7.5 kg



PolyFast	
	Black bakelite hot mounting resin with carbon filler. Thermosetting.
40100036	1 kg
40100037	7.5 kg



MultiFast Black	
	Black bakelite hot mounting resin with wood filler. Thermosetting.
40100064	2.5 kg
40100065	7.5 kg
40100066	25 kg
40100067	75 kg



MultiFast Green	
	Green bakelite hot mounting resin with wood filler. Thermosetting
40100030***	2.5 kg
40100031***	7.5 kg



MultiFast Red	
	Red bakelite hot mounting resin with wood filler. Thermosetting.
40100074	2.5 kg
40100075	7.5 kg
40100076	25 kg



Others	
	AntiStick Mould release agent. Stearate powder in applicator.
40300043	8 g

Cold Mounting



EpoFix

EpoFix Kit

Epoxy cold mounting system curing at room temperature in about 12 hours, with no shrinkage, especially suited for vacuum impregnation. Transparent

40200029 *** 1 l resin, 130 ml hardener and required consumables

EpoFix Resin

To be mixed with EpoFix Hardener. 1 l resin corresponds to 130 ml hardener

40200030 1 l

EpoFix Hardener

To be mixed with EpoFix Resin. 500 ml hardener corresponds to 4 l resin

40200031 *** 500 ml

SpeciFix

SpeciFix-20 Kit

Epoxy cold mounting system curing at room temperature in about 8 hours, with no shrinkage, especially suited for vacuum impregnation. Transparent

40200048 *** 1 l resin, 200 ml curing agent and required consumables

SpeciFix-40 Kit

Epoxy cold mounting system curing at elevated temperature (40-60 °C) in about 3.5 hours, with very low shrinkage, suitable for vacuum impregnation. Transparent

40200049 *** 1 l resin, 500 ml curing agent and required consumables

SpeciFix Resin

To be mixed with Specifix-20 Curing Agent or Specifix-40 Curing Agent. 1l resin corresponds to ml 200 ml Specifix-20 Curing Agent or 500 ml Specifix-40 Curing Agent

40200051 1 l

SpeciFix-20 Curing Agent

To be mixed with Specifix Resin. 500 ml curing agent corresponds to 2.5 l resin

40200052 *** 500 ml

SpeciFix-40 Curing Agent

To be mixed with Specifix Resin. 1 l curing agent corresponds to 2 l resin

40200053 *** 1 l



CaldoFix

CaldoFix-2 Kit

Epoxy cold mounting system, curing within 1½ hours when heated to 75°C / 167°F. Very low shrinkage, suitable for vacuum impregnation. Transparent.

40200084 *** 1 l resin, 325 ml hardener and required consumables

CaldoFix-2 Resin

To be mixed with CaldoFix-2 Hardener. 1 l resin correspond to 325 ml hardener.

40200085 1 l

CaldoFix-2 Hardener

To be mixed with CaldoFix-2 Resin. 500 ml hardener correspond to 1.5 l resin.

40200086 *** 500 ml





ClaroCit

ClaroCit Kit

Acrylic cold mounting system for universal use. Provides extremely clear, transparent mounts (especially when cured under pressure)

40200072 *** 800 g powder, 500 ml liquid and required consumables

ClaroCit Powder

To be mixed with ClaroCit liquid. 3 kg powder corresponds to 1.9 l liquid

40200074 3 kg

ClaroCit Liquid

To be mixed with ClaroCit Powder. 1 l liquid corresponds to 1.6 kg powder

40200073 *** 1 l



DuroCit-3

DuroCit-3 Kit

Acrylic cold mounting system with mineral filler. For excellent edge-retention

40200095 *** 570 g powder, 300 ml liquid I, 150 ml liquid II and required consumables

DuroCit Powder

To be mixed with DuroCit Liquid I and Liquid II.

3 kg Powder corresponds to 1.6 l Liquid I and 0.8 l Liquid II

40200081 3 kg

DuroCit-3 Liquid I

To be mixed with DuroCit Powder and DuroCit-3 Liquid II. 1 l Liquid I corresponds to 1.9 kg powder and 0.5 l Liquid II

40200096 *** 1 l

DuroCit-3 Liquid II

To be mixed with DuroCit Powder and DuroCit-3 Liquid I. 1 l Liquid II corresponds to 3.8 kg powder and 2 l Liquid I

40200097 *** 1 l



LevoCit

LevoCit Kit

Acrylic cold mounting resin with filler optimised for non-ferrous metals and soft ferrous metals.

40200092 *** 600 g powder, 300 ml liquid and required consumables

LevoCit Powder

To be mixed with LevoCit Liquid. 3 kg powder corresponds to 1.5 l liquid

40200093 3 kg

LevoCit Liquid

To be mixed with LevoCit Powder. 1 l liquid corresponds to 2 kg powder

40200094 *** 1 l



VersoCit-2

VersoCit-2 Kit

Acrylic cold mounting system for routine examination of soft to medium hard materials

40200089 750 g powder, 500 ml liquid and required consumables

VersoCit-2 Powder

To be mixed with VersoCit-2 Liquid. 3 kg powder corresponds to 2 l liquid

40200090 3 kg

VersoCit-2 Liquid

To be mixed with VersoCit-2 Powder. 1 l liquid corresponds to 1.5 kg powder

40200091 1 l



ViaFix

ViaFix Kit

Acrylic cold mounting system for filling of microvias and pores. The clearest mount is obtained by using a pressure chamber

40200067 *** 570 g powder, 500 ml liquid and required consumables

ViaFix Powder

To be mixed with ViaFix Liquid. 2.5 kg powder corresponds to 2.3 l liquid

40200068 2.5 kg

ViaFix Liquid

To be mixed with ViaFix Powder. 1 l liquid corresponds to 1.1 kg powder

40200069 *** 1 l

FixiForm

Two part polypropylene mounting cup for all Struers cold mounting materials.

40300085 25 mm / 1" dia. 10 pcs.

40300086 30 mm dia. 10 pcs.

40300087 1¼" dia. 10 pcs.

40300088 1½" dia. 10 pcs.

40300089 40 mm dia. 10 pcs.

40300090 50 mm / 2" dia. 10 pcs.



FlexiForm

Flexible silicone rubber mounting cup for ClaroCit, DuroCit, VersoCit-2 and ViaFix

40300018 25 mm dia. 5 pcs.

40300019 30 mm dia. 5 pcs.

40300020 1¼" dia. 5 pcs.

40300021 1½" dia. 5 pcs.

40300022 40 mm dia. 5 pcs.

Silicone rubber mounting cup for mounting to be used especially with acrylic cold mounting resins with which it can be reused many times. It can also be used with epoxy resins. Mounts fit to specimen holder MAXDI, 02606920

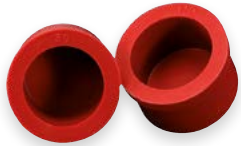
40300082 68 x 37 x 35 mm. 3 pcs.

Silicone rubber mounting cup for mounting to be used especially with acrylic cold mounting resins with which it can be reused many times. It can also be used with epoxy resins. Mounts fit to specimen holder MAXOT, 02606922

40300083 90 x 50 x 35 mm. 3 pcs.

Silicone rubber mounting cup for mounting to be used especially with acrylic cold mounting resins with which it can be reused many times. It can also be used with epoxy resins.

40300084 120 x 60 x 45 mm. 2 pcs.



SeriForm

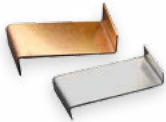
Two parts polypropylene mounting cup with parallel sides for ClaroCit, VersoCit-2 and ViaFix

40300007 25 mm dia. 10 pcs.

40300008 30 mm dia. 10 pcs.

40300009 40 mm dia. 5 pcs.





Others	
	Flangeform Mounting cup with flange. For AccuStop 30
40300012	30 mm dia. 3 pcs.
	PCB-Coupon Mould Mould for mounting PCB-coupons. Consists of a hard part and a soft part (40300024)
40300023	1 pcs.
40300024	Mould for mounting PCB-coupons. Replacement soft part for 40300023 1 pcs.
	MultiClips Multiple plastic clip for holding up to 5 small and thin specimens when mounting
40300027	50 pcs.
	Fixation Clips Metal spring clip for holding small and thin specimens when mounting
40300026	6 mm dia. 100 pcs.
40300025	9 mm dia. 100 pcs.
	Taper Section Angle, Aluminium Aluminium angle for mounting of taper sections
40300070	50 pcs.
	Taper Section Angle, Copper Copper angle for mounting of taper sections
40300071	50 pcs.
	Taper Section Angle, Steel Steel angle for mounting of taper sections
40300069	50 pcs.
	Consumables Kit Disposable consumables for CitoVac
40300080	100 dispensing tubes and one chamber protector
	Consumables for Epovac
40300030	80 polyethylene tubes, 80 mixing cups, 80 stirrers and 2 rubber plugs
	For mixing of cold mounting systems
40300032	400 mixing cups and 400 stirrers
	Mixer for mixing of Epoxy For optimal mixing of cold mounting epoxies
05696101	1 mixer and 1 disposable propeller
	Disposable Propeller To be used with Struers Mixer (05696101)
40300072	20 pcs.
	AcryDye Dye for colouring of acrylic cold mounting resins: ClaroCit, DuroCit, VersoCit-2 and ViaFix
40300081	Set with 20 ml of each red, blue and yellow dye
	Disposable Syringes Syringes for measuring of epoxy resins and hardeners
40300047	5 ml. 100 pcs.
40300048	10 ml. 100 pcs.
40300049	20 ml. 50 pcs.
	EpoDye Fluorescent dye for use with EpoFix, SpeciFix, CaldoFix, ClaroCit and ViaFix. Special filters for microscope required
40300002	20 g
	Silicone Oil Silicone release agent
40300076	100 ml

Say goodbye to manual cleaning

Join Generation Clean!



Optimal cleaning between preparation steps

Shorten the specimen preparation process, eliminate the environmental footprint and achieve the same perfect result every time!

Lavamin is the new, fully automatic cleaning unit, using only water and ultrasound to clean specimens. Experience the advantages from a fully automated cleaning process – with Lavamin.

www.struers.com



MD-System Grinding Discs – Water Cooled – Selection Guide

Description	Recommended Use	Indicative lifetime*
MD-Piano 80: Resin bonded diamond disc that provides a surface finish comparable to 80 grit SiC paper.	Plane grinding of hard materials > 150 HV range such as ferrous metals, concrete, ceramics.	100
MD-Piano 120: Resin bonded diamond disc that provides a surface finish comparable to 120 grit SiC paper.	Plane grinding of hard materials > 150 HV range such as ferrous metals, concrete, ceramics.	100
MD-Piano 220: Resin bonded diamond disc that provides a surface finish comparable to 220 grit SiC paper.	Plane grinding of hard materials > 150 HV range such as ferrous metals, concrete, ceramics.	100
MD-Piano 500: Resin bonded diamond disc that provides a surface finish comparable to 500 grit SiC paper.	Fine grinding of hard materials > 150 HV range such as ferrous metals, concrete, ceramics.	100
MD-Piano 1200: Resin bonded diamond disc that provides a surface finish comparable to 1200 grit SiC paper.	Fine grinding of hard materials > 150 HV range such as ferrous metals, concrete, ceramics.	100
MD-Piano 2000: Resin bonded diamond disc that provides a surface finish comparable to 2000 grit SiC paper.	Fine grinding of hard materials > 150 HV range such as ferrous metals, concrete, ceramics.	300
MD-Piano 4000: Resin bonded diamond disc that provides a surface finish comparable to 4000 grit SiC paper.	Fine grinding of hard materials > 150 HV range such as ferrous metals, concrete, ceramics.	300
MD-Forte 120: Nickel bonded diamond disc that provides a surface finish comparable to 120 grit SiC paper.	Grinding of hard materials > 150 HV range such as ferrous metals, concrete, ceramics.	100
MD-Primo 120: A metal disc with a SiC abrasive embedded in a resin bond. It provides a surface finish comparable to 120 grit SiC paper.	Plane grinding of soft materials in the 40 - 250 HV range like non-ferrous metals (aluminium, copper, etc.) and soft materials.	50
MD-Primo 220: A metal disc with a SiC abrasive embedded in a resin bond. It provides a surface finish comparable to 220 grit SiC paper.	Plane grinding of soft materials in the 40 - 250 HV range like non-ferrous metals (aluminium, copper, etc.) and soft materials.	50
MD-Molto 220: Resin bonded diamond disc that provides a surface finish comparable to 220 grit SiC paper.	Plane grinding of aluminum alloys in the 40 - 2000 HV range.	100
MD-Mezzo 220: Resin bonded diamond disc that provides a surface finish comparable to 220 grit SiC paper.	Plane grinding of titanium alloys in the 150 - 450 HV range.	100

All MD-System Grinding Discs use water for cooling just like SiC paper. They all provide high and consistent material removal rate, and produce exceptionally flat specimens.

* Indicative values corresponding to preparation of number of specimen holders, 6 x ø 30 mm. Actual lifetime depends on application (prepared material, size, shape, number etc).

MD-Polishing Cloth Selection Guide

Cloth	Characteristics	Recommended use	Abrasive range	Resilience	Hardness
MD-Plan	Coated, woven polyester	Fine grinding of soft metals Pre-polishing of hard materials	15 - 3 µm	Very low	Hard
MD-Pan	Impregnated, non-woven technical textile	Fine grinding of soft metals Pre-polishing of hard and brittle materials	15 - 1 µm	Very low	Hard
MD-Sat	Woven acetate	Fine grinding and polishing of ferrous metals, non-ferrous metals, coatings and plastics	9 - 1 µm	Medium	Hard
MD-Dur	Satin woven natural silk	Fine grinding and polishing of ferrous metals, non-ferrous metals, coatings and plastics	9 - 1 µm	Medium	Hard
MD-Dac	Satin woven acetate	Polishing of all materials	9 - 3 µm	Medium	Hard
MD-Mol MD-Mol APS	Taffeta woven 100 % wool	Polishing of ferrous and non-ferrous metals and polymers APS for Automatic Preparation Systems	≤ 3 µm	High	Soft
MD-Plus	Synthetic nap	One step polishing for sintered carbides and steels	≤ 3 µm	High	Soft
MD-Floc	Synthetic nap	Polishing of all materials	≤ 3 µm	Very high	Very soft
MD-Nap	Synthetic short nap	Final polishing of all materials	≤ 1 µm	Very high	Very soft
MD-Chem / MD-Chem NonStick	Porous neoprene	Final polishing of all materials		High	Soft



Grinding

Struers provides a full range of grinding equipment and consumables to cater to the individual preparation requirements of a wide range of materialographic specimen types.

Grinding is the first stage in mechanical material removal. Proper grinding removes damaged or deformed surface material while introducing as little new deformation as possible, thus preparing the specimen surface for polishing. The quality of the finished surface is very much dependent upon the equipment and consumables used in the process.

MD-System

The advanced MD-System comprises a magnetic supporting disc combined with metal-backed grinding discs and polishing cloths. With MD-System grinding discs you can achieve consistently high material removal rates and maximum flatness, due to uniform removal of hard and soft phases in the specimen. At the same time, you can reduce preparation time and costs significantly.

Plane Grinding



Grinding Stones	
	Grinding Stone PAMST Aluminium oxide grinding stone, for plane grinding of metals on Prepamatic and Prepamatic-2.
40800005	Grit 150. 200 mm (8") dia.
	Grinding Stone PLARI Aluminium oxide grinding stone, for plane grinding of metals on Abramfin
40800007	Grit 80. 250 mm (10") dia.
	Grinding Stone MINAL Aluminium oxide grinding stone, for plane grinding of metals on Miniplan
40800006	Grit 120. 280 mm (11") dia.
	Grinding stone 6A36 #150 Aluminium oxide grinding stone, for fast plane grinding of very hard steels/steels containing many carbides on AbraPlan and MAPS.
40800177	Grit 150, 356 mm dia.
	Grinding Stone 4A36 #150 Aluminium oxide grinding stone, for fast plane grinding of metals >HV 250 on AbraPlan and MAPS
40800010	Grit 150. 356 mm (14") dia.
	Grinding stone 3A36 #150 Aluminium oxide grinding stone, for fast plane grinding of nickel-based alloys (turbine blades) and stainless steels on AbraPlan and MAPS.
40800178	Grit 150, 356 mm dia.
	Grinding Stone 2S36 #150 Silicon carbide grinding stone, for fast plane grinding of non-ferrous metals on AbraPlan and MAPS
40800074	Grit 150. 356 mm (14") dia.
	Grinding stone 6A27 #150 Aluminium oxide grinding stone, for fast plane grinding of very hard steels/steels containing many carbides on Hexamatic.
40800181	Grit 150, 270 mm dia.
	Grinding stone 4A27 #150 Aluminium oxide grinding stone, for fast plane grinding of metals >HV 250 on Hexamatic.
40800179	Grit 150, 270 mm dia.
	Grinding stone 3A27 #150 Aluminium oxide grinding stone, for fast plane grinding of nickel- based alloys (turbine blades) and stainless steels on Hexamatic.
40800182	Grit 150, 270 mm dia.
	Grinding stone 2S27 #150 Silicon carbide grinding stone, for fast plane grinding of non-ferrous metals on Hexamatic.
40800180	Grit 150, 270 mm dia.
	Diamond Grinding Discs
	Diamond grinding disc 8D27 #120 Resin bonded diamond grinding disc, for fast plane grinding of ceramics and sintered carbides on Hexamatic
40800183	Grit 120, 270 mm dia.
	Diamond grinding disc 8D36 #120 Resin bonded diamond disc, grooved in a square pattern. For plane grinding of ceramics and sintered carbides on MAPS/MAPS-2, Abraplan, AbraPlan-10 and AbraPlan-20
40800202	Grit 120. 350 mm (14") dia.
	Cup Wheels
	Diamond Cup Wheel M0P15 For grinding of hard, brittle materials on Discoplan-TS. Metal bonded
40800013	70 µm. 150 mm (6") dia. x 31.75 mm dia.
	Diamond Cup Wheel B0P15 For grinding of hard, ductile materials on Discoplan-TS. Resin bonded
40800014	35 µm. 150 mm (6") dia. x 31.75 mm dia.





	SiC Cup Wheel 10P13 SiC Cup Wheel, for grinding of ductile materials on Accutom-100 and Accutom-50. Resin bond
40800120	125 µm. 130 mm (5") dia. x 12.7 mm dia.
	Diamond Cup Wheel M0P10 For grinding of hard and brittle materials on Accutom-100 and Accutom-50. Metal bond
40800082	91 µm. 100 mm (4") dia. x 12.7 mm dia.
40800185	40 µm. 100 mm (4") dia. x 12.7 mm dia.
40800184	25 µm. 100 mm (4") dia. x 12.7 mm dia.
	Diamond Cup Wheel M0P15 For grinding of hard and brittle materials on Accutom-100. Metal bond
40800199	91 µm. 150 mm (6") dia. x 12.7 mm dia.
40800200	40 µm. 150 mm (6") dia. x 12.7 mm dia.
	Diamond Cup Wheel B0P10 For grinding of hard and ductile materials on Accutom-100 and Accutom-50. Resin bond
40800083	40 µm. 100 mm (4") dia. x 12.7 mm dia.
	Petrodisc-M
	Disc for one-step fine grinding of materials >HV 150, using diamonds
02426913	230 mm (9") dia.
	Others
	Diamond Point for Dressing Tool Diamond point for dressing tool, 5 mm dia., for Hexamatic, MAPS, AbraPlan-20, Prepamatic, AbraPlan-10 and Miniplan.
40800045	1 pcs. 5 mm dia.
	Diamond point for dressing tool, 8 mm dia. Use 40800045 on AbraPlan-10/-20 for best planeness.
02606962	1 pcs. 8 mm dia.
	Diamond point for dressing tool, 8 mm dia. Use 40800045 on AbraPlan-10/-20 for best planeness.
02606901	1 pcs. 8 mm dia.
	Dressing Stick Aluminium oxide stick for truing and opening of diamond and CBN cut-off wheels, diamond grinding discs and the grinding discs in the MD-System (not for use with MD-Piano 2000/4000).
40800044	1 pcs.
	Dressing stick for MD-Piano 2000/4000 Aluminium oxide stick for truing and opening of MD-Piano 2000 and 4000 diamond fine grinding discs.
40800186	Dressing Stick MD-Piano 2000/4000

MD Grinding

MD-Primo

MD-Primo 120

Grinding disc for plane grinding of materials HV 40-250. Surface finish comparable to SiC-Paper grit 120. SiC abrasive embedded in a resin bond. For magnetic fixation on MD-Disc

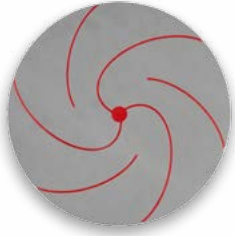
40800085	200 mm (8") dia.
40800086	250 mm (10") dia.
40800087	300 mm (12") dia.
40800118	350 mm (14") dia.

MD-Primo 220

Grinding disc for plane grinding of materials HV 40-250. Surface finish comparable to SiC-Paper grit 220. SiC abrasive embedded in a resin bond. For magnetic fixation on MD-Disc

40800088	200 mm (8") dia.
40800089	250 mm (10") dia.
40800090	300 mm (12") dia.





MD-Molto	
MD-Molto 220 Resin bonded diamond grinding disc for plane grinding of aluminium alloys. Surface finish comparable to SiC Paper/Foil #220. For magnetic fixation on MD-Disc.	
40800187	200 mm (8") dia.
40800188	250 mm (10") dia.
40800189	300 mm (12") dia.
40800190	350 mm (14") dia.

MD-Mezzo	
MD-Mezzo 220 Resin bonded diamond grinding disc for plane grinding of titanium alloys. Surface finish comparable to SiC Paper/Foil #220. For magnetic fixation on MD-Disc.	
40800191	200 mm (8") dia.
40800192	250 mm (10") dia.
40800193	300 mm (12") dia.
40800194	350 mm (14") dia.

MD-Piano	
MD-Piano 80 Resin bonded diamond grinding disc for plane grinding of materials HV 150-2000. Surface finish comparable to SiC-Paper grit 80. For magnetic fixation on MD-Disc	
40800121	200 mm (8") dia.
40800122	250 mm (10") dia.
40800123	300 mm (12") dia.
40800124	350 mm (14") dia.

MD-Piano 120 Resin bonded diamond grinding disc for plane grinding of materials HV 150-2000. Surface finish comparable to SiC-Paper grit 120. For magnetic fixation on MD-Disc	
40800125	200 mm (8") dia.
40800126	250 mm (10") dia.
40800127	300 mm (12") dia.
40800128	350 mm (14") dia.

MD-Piano 220 Resin bonded diamond grinding disc for plane grinding of materials HV 150 - 2000. Surface finish comparable to SiC-Paper grit 220. For magnetic fixation on MD-Disc	
40800129	200 mm (8") dia.
40800130	250 mm (10") dia.
40800131	300 mm (12") dia.
40800132	350 mm (14") dia.

MD-Piano 500 Resin bonded diamond grinding disc for fine grinding of materials HV 150 - 2000. Surface finish comparable to SiC-Paper grit 500. For magnetic fixation on MD-Disc	
40800133	200 mm (8") dia.
40800134	250 mm (10") dia.
40800135	300 mm (12") dia.
40800136	350 mm (14") dia.

MD-Piano 1200 Resin bonded diamond grinding disc for fine grinding of materials HV 150 - 2000. Surface finish comparable to SiC-Paper grit 1200. For magnetic fixation on MD-Disc	
40800137	200 mm (8") dia.
40800138	250 mm (10") dia.
40800139	300 mm (12") dia.
40800140	350 mm (14") dia.

MD-Piano 2000

Resin bonded diamond grinding disc for ultra fine grinding of materials HV 150 - 2000. Surface finish comparable to SiC-Paper grit 2000. For magnetic fixation on MD-Disc.

40800141	200 mm (8") dia.
40800142	250 mm (10") dia.
40800143	300 mm (12") dia.
40800144	350 mm (14") dia.

MD-Piano 4000

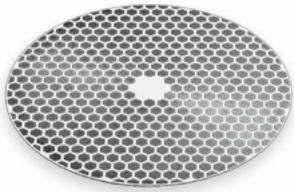
Resin bonded diamond grinding disc for ultra fine grinding of materials HV 150 - 2000. Surface finish comparable to SiC-Paper grit 4000. For magnetic fixation on MD-Disc.

40800145	200 mm (8") dia.
40800146	250 mm (10") dia.
40800147	300 mm (12") dia.
40800148	350 mm (14") dia.

MD-Allegro

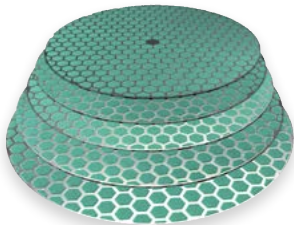
Maintenance-free composite disc for one-step fine grinding of materials >HV 150, using diamonds. For magnetic fixation on MD-Disc

40500134	200 mm (8") dia. 1 pc.
40500065	200 mm (8") dia. 5 pcs.
40500135	250 mm (10") dia. 1 pc.
40500066	250 mm (10") dia. 5 pcs.
40500136	300 mm (12") dia. 1 pc.
40500067	300 mm (12") dia. 5 pcs.
40500140	350 mm (14") dia. 5 pcs.

**MD-Largo**

Maintenance-free composite disc for one-step fine grinding of materials >HV 40, using diamonds. For ductile materials like non-ferrous metals and stainless steel, but also for brittle materials like ceramics and hard minerals. For magnetic fixation on MD-Disc

40500137	200 mm (8") dia. 1 pc.
40500097	200 mm (8") dia. 5 pcs.
40500138	250 mm (10") dia. 1 pc.
40500098	250 mm (10") dia. 5 pcs.
40500139	300 mm (12") dia. 1 pc.
40500099	300 mm (12") dia. 5 pcs.
40500141	350 mm (14") dia. 5 pcs.

**Diamond Pads****200 mm Diamond Pad****Diamond Pad**

Metal bonded diamond grinding pad, for grinding of hard materials. (>HV 600). Self-adhesive

40800025	250 µm. 200 mm (8") dia.
40800026	125 µm. 200 mm (8") dia.
40800027	40 µm. 200 mm (8") dia.
40800028	20 µm. 200 mm (8") dia.

250 mm Diamond Pad**Diamond Pad**

Metal bonded diamond grinding pad, for grinding of hard materials. (>HV 600). Self-adhesive

40800033	250 µm. 250 mm (10") dia.
40800034	125 µm. 250 mm (10") dia.
40800035	40 µm. 250 mm (10") dia.
40800036	20 µm. 250 mm (10") dia.



300 mm Diamond Pad

Diamond Pad

Metal bonded diamond grinding pad, for grinding of hard materials. (>HV 600). Self-adhesive

40800037	250 µm. 300 mm (12") dia.
40800038	125 µm. 300 mm (12") dia.
40800039	40 µm. 300 mm (12") dia.
40800040	20 µm. 300 mm (12") dia.

Grinding Paper

200 mm SiC Foil

SiC Foil

For wet grinding of materials (HV 30 - 800). PET foil backing, for use on MD-Gekko or Gekko PSA.

40400200	Grit 80. 200 mm (8") dia. 50 pcs.
40400201	Grit 120. 200 mm (8") dia. 50 pcs.
40400202	Grit 180. 200 mm (8") dia. 50 pcs.
40400203	Grit 220. 200 mm (8") dia. 50 pcs.
40400204	Grit 320. 200 mm (8") dia. 100 pcs.
40400205	Grit 500. 200 mm (8") dia. 100 pcs.
40400206	Grit 800. 200 mm (8") dia. 100 pcs.
40400207	Grit 1000. 200 mm (8") dia. 100 pcs.
40400208	Grit 1200. 200 mm (8") dia. 100 pcs.

For wet grinding of materials (HV 30 - 400). PET foil backing, for use on MD-Gekko or Gekko PSA.

40400209	Grit 2000. 200 mm (8") dia. 50 pcs.
----------	-------------------------------------

For wet grinding of materials (HV 30 - 400). Adhesive backing, for use on MD-Gekko or Gekko PSA.

40400212	Grit 4000. 200 mm (8") dia. 50 pcs.
----------	-------------------------------------

250 mm SiC Foil

SiC Foil

For wet grinding of materials (HV 30 - 800). PET foil backing, for use on MD-Gekko or Gekko PSA.

40400220	Grit 80. 250 mm (10") dia. 50 pcs.
40400221	Grit 120. 250 mm (10") dia. 50 pcs.
40400222	Grit 180. 250 mm (10") dia. 50 pcs.
40400223	Grit 220. 250 mm (10") dia. 50 pcs.
40400224	Grit 320. 250 mm (10") dia. 100 pcs.
40400225	Grit 500. 250 mm (10") dia. 100 pcs.
40400226	Grit 800. 250 mm (10") dia. 100 pcs.
40400227	Grit 1000. 250 mm (10") dia. 100 pcs.
40400228	Grit 1200. 250 mm (10") dia. 100 pcs.

For wet grinding of materials (HV 30 - 400). PET foil backing, for use on MD-Gekko or Gekko PSA.

40400229	Grit 2000. 250 mm (10") dia. 50 pcs.
----------	--------------------------------------

For wet grinding of materials (HV 30 - 400). Adhesive backing, for use on MD-Gekko or Gekko PSA.

40400232	Grit 4000. 250 mm (10") dia. 50 pcs.
----------	--------------------------------------



300 mm SiC Foil

SiC Foil

For wet grinding of materials (HV 30 - 800). PET foil backing, for use on MD-Gekko or Gekko PSA.

40400240	Grit 80. 300 mm (12") dia. 50 pcs.
40400241	Grit 120. 300 mm (12") dia. 50 pcs.
40400242	Grit 180. 300 mm (12") dia. 50 pcs.
40400243	Grit 220. 300 mm (12") dia. 50 pcs.
40400244	Grit 320. 300 mm (12") dia. 100 pcs.
40400245	Grit 500. 300 mm (12") dia. 100 pcs.
40400246	Grit 800. 300 mm (12") dia. 100 pcs.
40400247	Grit 1000. 300 mm (12") dia. 100 pcs.
40400248	Grit 1200. 300 mm (12") dia. 100 pcs.
	For wet grinding of materials (HV 30 - 400). PET foil backing, for use on MD-Gekko or Gekko PSA.
40400249	Grit 2000. 300 mm (12") dia. 50 pcs.
	For wet grinding of materials (HV 30 - 400). Adhesive backing, for use on MD-Gekko or Gekko PSA.
40400252	Grit 4000. 300 mm (12") dia. 50 pcs.

350 mm SiC Foil

SiC Foil

For wet grinding of materials (HV 30 - 800). PET foil backing, for use on MD-Gekko or Gekko PSA.

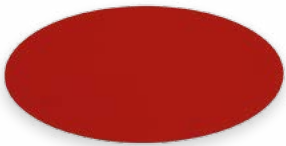
40400260	Grit 80. 350 mm (14") dia. 50 pcs.
40400261	Grit 120. 350 mm (14") dia. 50 pcs.
40400262	Grit 180. 350 mm (14") dia. 50 pcs.
40400263	Grit 220. 350 mm (14") dia. 50 pcs.
40400264	Grit 320. 350 mm (14") dia. 100 pcs.
40400265	Grit 500. 350 mm (14") dia. 100 pcs.
40400266	Grit 800. 350 mm (14") dia. 100 pcs.
40400267	Grit 1000. 350 mm (14") dia. 100 pcs.
40400268	Grit 1200. 350 mm (14") dia. 100 pcs.
	For wet grinding of materials (HV 30 - 400). PET foil backing, for use on MD-Gekko or Gekko PSA.
40400269	Grit 2000. 350 mm (14") dia. 50 pcs.
40400271	Grit 4000. 350 mm (14") dia. 50 pcs.

MD-Gekko

MD-Gekko

Adapter for use with SiC Foil or self adhesive consumables on the MD-System, for easy removal. For magnetic fixation on MD-Disc.

49900047	200 mm dia. 2 pcs.
49900048	250 mm dia. 2 pcs.
49900049	300 mm dia. 2 pcs.
49900050	350 mm dia. 2 pcs.
	Gekko PSA
	Self adhesive Gekko Foil for use with SiC Foil or self adhesive consumables. To be glued on an aluminium disc.
49900053	200 mm dia. 2 pcs.
49900054	250 mm dia. 2 pcs.
49900055	300 mm dia. 2 pcs.



200 mm SiC Paper

Silicon Carbide Grinding Paper

For wet grinding of materials (HV 30 - 800). Plain back

40400056	Grit 80. 200 mm (8") dia. 50 pcs.
40400057	Grit 120. 200 mm (8") dia. 50 pcs.
40400058	Grit 180. 200 mm (8") dia. 50 pcs.
40400125	Grit 220. 200 mm (8") dia. 50 pcs.
40400008	Grit 320. 200 mm (8") dia. 100 pcs.
40400009	Grit 500. 200 mm (8") dia. 100 pcs.
40400010	Grit 800. 200 mm (8") dia. 100 pcs.
40400011	Grit 1000. 200 mm (8") dia. 100 pcs.
40400012	Grit 1200. 200 mm (8") dia. 100 pcs.

For wet grinding of materials (HV 30 - 400). Plain back

40400013	Grit 2400. 200 mm (8") dia. 50 pcs.
40400014	Grit 4000. 200 mm (8") dia. 50 pcs.

230 mm SiC Paper

Silicon Carbide Grinding Paper

For wet grinding of materials (HV 30 - 800). Plain back

40400059	Grit 80. 230 mm (9") dia. 50 pcs.
40400060	Grit 120. 230 mm (9") dia. 50 pcs.
40400061	Grit 180. 230 mm (9") dia. 50 pcs.
40400126	Grit 220. 230 mm (9") dia. 50 pcs.
40400019	Grit 320. 230 mm (9") dia. 100 pcs.
40400020	Grit 500. 230 mm (9") dia. 100 pcs.
40400021	Grit 800. 230 mm (9") dia. 100 pcs.
40400022	Grit 1000. 230 mm (9") dia. 100 pcs.
40400023	Grit 1200. 230 mm (9") dia. 100 pcs.

For wet grinding of materials (HV 30 - 400). Plain back

40400024	Grit 2400. 230 mm (9") dia. 50 pcs.
40400025	Grit 4000. 230 mm (9") dia. 50 pcs.

250 mm SiC Paper

Silicon Carbide Grinding Paper

For wet grinding of materials (HV 30 - 800). Plain back

40400065	Grit 80. 250 mm (10") dia. 50 pcs.
40400066	Grit 120. 250 mm (10") dia. 50 pcs.
40400067	Grit 180. 250 mm (10") dia. 50 pcs.
40400127	Grit 220. 250 mm (10") dia. 50 pcs.
40400069	Grit 320. 250 mm (10") dia. 100 pcs.
40400070	Grit 500. 250 mm (10") dia. 100 pcs.
40400071	Grit 800. 250 mm (10") dia. 100 pcs.
40400072	Grit 1000. 250 mm (10") dia. 100 pcs.
40400073	Grit 1200. 250 mm (10") dia. 100 pcs.

For wet grinding of materials (HV 30 - 400). Plain back

40400026	Grit 2400. 250 mm (10") dia. 50 pcs.
40400027	Grit 4000. 250 mm (10") dia. 50 pcs.



305 mm SiC Paper

Silicon Carbide Grinding Paper

For wet grinding of materials (HV 30 - 800). Plain back

40400062	Grit 80. 305 mm (12") dia. 50 pcs.
40400063	Grit 120. 305 mm (12") dia. 50 pcs.
40400064	Grit 180. 305 mm (12") dia. 50 pcs.
40400128	Grit 220. 305 mm (12") dia. 50 pcs.
40400032	Grit 320. 305 mm (12") dia. 100 pcs.
40400033	Grit 500. 305 mm (12") dia. 100 pcs.
40400034	Grit 800. 305 mm (12") dia. 100 pcs.
40400035	Grit 1000. 305 mm (12") dia. 100 pcs.
40400036	Grit 1200. 305 mm (12") dia. 100 pcs.
	For wet grinding of materials (HV 30 - 400). Plain back
40400037	Grit 2400. 305 mm (12") dia. 50 pcs.
40400038	Grit 4000. 305 mm (12") dia. 50 pcs.

Adhesives for Grinding Paper

Adhesive Discs

Double-sided adhesive discs for easy adhesion of plain grinding papers on grinding/polishing discs. Can be used repeatedly

49900006	200 mm (8") dia. 10 pcs.
49900007	230 mm (9") dia. 10 pcs.
49900015	250 mm (10") dia. 10 pcs.
49900008	300 mm (12") dia. 10 pcs.

MD-Fuga

Metal disc with an adhesive layer for holding plain grinding papers. Can be used repeatedly. For magnetic fixation on MD-Disc

49900021	200 mm (8") dia. 5 pcs.
49900022	250 mm (10") dia. 5 pcs.
49900023	300 mm (12") dia. 5 pcs.

Other Grinding Paper

Silicon Carbide Grinding Paper

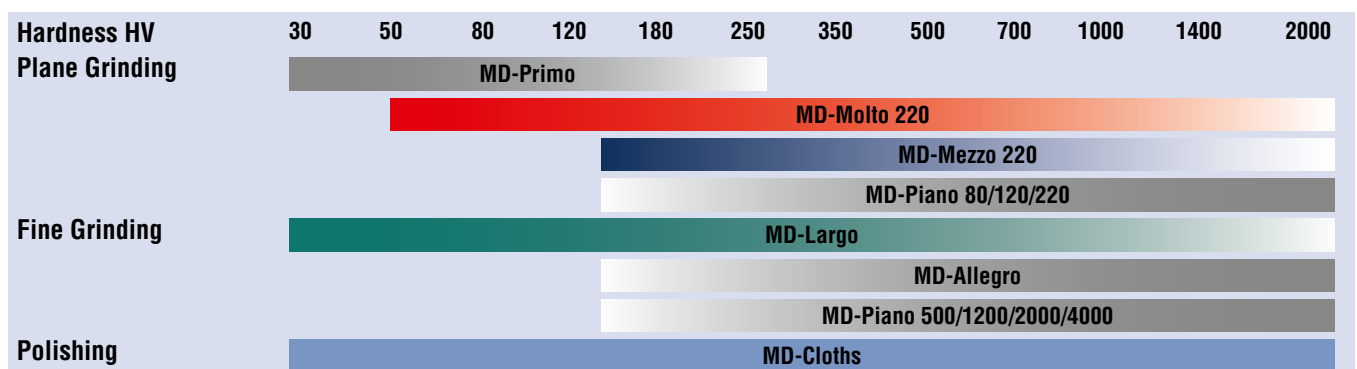
For wet grinding of materials (HV 30 - 800) on Lunn-Major and Lunn-Labor. Roll. Plain back

40400041	Grit 220. 18 m x 7.5 cm
40400042	Grit 320. 20 m x 7.5 cm
40400043	Grit 500. 20 m x 7.5 cm
40400044	Grit 1000. 25 m x 7.5 cm

Preparation methods overview - see Metallogram on page 39

			Plane Grinding	Fine Grinding	Diamond Polishing	Oxide Polishing
Method A Ex. Al 99,5 sand cast		Surface	SiC-Foil (on MD-Gekko)	MD-Largo	MD-Mol	MD-Chem
		Abrasive, Grit/Grain	SiC # 320	DiaPro Allegro/Largo 9 µm	DiaPro Mol R 3 µm	OP-S NonDry 0.04 µm
Method B Ex. Cu pure		Surface	SiC Foil (on MD-Gekko)	MD-Largo	MD-Mol	MD-Chem
		Abrasive, Grit/Grain	SiC # 320	DiaPro Allegro/Largo 9 µm	DiaPro Mol R 3 µm	OP-S NonDry 0.04 µm
Method C Ex. Cu 58 Zn 42		Surface	SiC Foil (on MD-Gekko)	MD-Largo	MD-Dac	MD-Chem
		Abrasive, Grit/Grain	SiC # 320	DiaPro Allegro/Largo 9 µm	DiaPro Dac 3 µm	OP-S NonDry 0.04 µm
Method D Ex. Nodular cast iron		Surface	MD-Piano 220	MD-Allegro	MD-Dac	MD-Chem
		Abrasive, Grit/Grain	Diamond * ~ #220	DiaPro Allegro/Largo 9 µm	DiaPro Dac 3 µm	OP-AA 0.02 µm
Method E Ex. White cast iron		Surface	MD-Piano 220	MD-Allegro	MD-Dur	MD-Chem
		Abrasive, Grit/Grain	Diamond * ~ #220	DiaPro Allegro/Largo 9 µm	DiaPro Dur 3 µm	OP-U NonDry 0.04 µm
Method F Ex. WC in Cu matrix		Surface	MD-Piano 120	MD-Allegro	MD-Dac	MD-Chem
		Abrasive, Grit/Grain	Diamond * ~ #120	DiaPro Allegro/Largo 9 µm	DiaPro Dac 3 µm	OP-U NonDry 0.04 µm
Method G Ex. Al ₂ O ₃		Surface	MD-Piano 220	MD-Plan		MD-Chem
		Abrasive, Grit/Grain	Diamond * ~ #220	DiaPro Plan 9 µm		OP-S NonDry 0.04 µm
Method X Ex. MgAl alloy		Surface	SiC-Foil (on MD-Gekko)	MD-Largo	MD-Mol	
		Abrasive, Grit/Grain	SiC # 320	DiaPro Allegro/Largo 9 µm	DiaPro Mol R 3 µm	
Method Y Ex. Medium carbon steel		Surface	MD-Piano 220	MD-Plan	MD-Floc	
		Abrasive, Grit/Grain	Diamond * ~ #220	DiaPro Plan 9 µm	DiaPro Floc 3 µm	
Method Z Ex. Sintered carbide with coatings		Surface	MD-Piano 120	MD-Allegro	MD-Dac	
		Abrasive, Grit/Grain	Diamond * ~ #120	DiaPro Allegro/Largo 9 µm	DiaPro Dac 3 µm	

*Corresponds to FEPA P standard grain size.





Polishing

Struers polishing products are made of carefully selected materials. Extensive tests have led to the development of the market's best equipment and consumables in terms of preparation quality and durability.

To remove deformation from grinding and obtain a surface that is highly reflective, the specimens must be polished before they can be examined under the microscope. Polishing is carried out on cloths of differing resilience with different abrasives. Two processes are available: Diamond Polishing and Oxide Polishing.

DiaPro

DiaPro is a line of diamond suspensions, specially developed for extra-high performance with Struers grinding and polishing surfaces, which improves your efficiency significantly. Each DiaPro suspension has been developed and optimised for a specific surface, and the results are outstanding. Preparation times are reduced by 30% on average. At the same time, DiaPro delivers exceptional planeness, edge retention and reproducibility.

Abrasive Film

Diamond Film

For polishing with TriPod polishing fixture. Plain back

40400180	0.1 µm. 200 mm (8") dia. 5 pcs.
40400179	0.5 µm. 200 mm (8") dia. 5 pcs.
40400178	1 µm. 200 mm (8") dia. 5 pcs.
40400177	3 µm. 200 mm (8") dia. 5 pcs.
40400176	6 µm. 200 mm (8") dia. 5 pcs.
40400175	9 µm. 200 mm (8") dia. 5 pcs.
40400174	15 µm. 200 mm (8") dia. 5 pcs.
40400173	30 µm. 200 mm (8") dia. 5 pcs.

Aluminium Oxide Film

For polishing with TriPod polishing fixture. Plain back

40400172	0.05 µm. 200 mm (8") dia. 50 pcs.
40400170	0.3 µm. 200 mm (8") dia. 50 pcs.
40400169	1 µm. 200 mm (8") dia. 50 pcs.

MD-Polishing Cloths

MD-Plan

Polishing cloth for fine grinding of soft metals and pre-polishing of hard materials. Coated woven polyester. For magnetic fixation on MD-Disc

40500086	200 mm (8") dia. 5 pcs.
40500087	250 mm (10") dia. 5 pcs.
40500088	300 mm (12") dia. 5 pcs.
40500147	350 mm (14") dia. 5 pcs.

MD-Pan

Polishing cloth for fine grinding of soft metals and pre-polishing of hard and brittle materials. Impregnated non-woven technical textile. For magnetic fixation on MD-Disc

40500157	200 mm (8") dia. 5 pcs.
40500158	250 mm (10") dia. 5 pcs.
40500159	300 mm (12") dia. 5 pcs.
40500160	350 mm (14") dia. 5 pcs.

MD-Sat

Polishing cloth for fine grinding and polishing of ferrous metals, non-ferrous metals, coatings and plastics. Is used for diamond with particle size 9 - 3 µm. Woven acetate. For magnetic fixation on MD-Disc

40500406	200 mm (8") dia. 5 pcs.
40500407	250 mm (10") dia. 5 pcs.
40500408	300 mm (12") dia. 5 pcs.

MD-Dur

Polishing cloth for fine grinding and polishing of ferrous metals, non-ferrous metals, coatings, plastics. Satin woven natural silk. For magnetic fixation on MD-Disc

40500074	200 mm (8") dia. 5 pcs.
40500075	250 mm (10") dia. 5 pcs.
40500076	300 mm (12") dia. 5 pcs.
40500149	350 mm (14") dia. 5 pcs.



MD-Dac

Polishing cloth for polishing of all materials. Is used for diamond with particle size 9 - 3 μm . Satin woven acetate. For magnetic fixation on MD-Disc

40500071	200 mm (8") dia. 5 pcs.
40500095	250 mm (10") dia. 5 pcs.
40500073	300 mm (12") dia. 5 pcs.
40500150	350 mm (14") dia. 5 pcs.

MD-Mol

Polishing cloth for polishing of ferrous and non-ferrous metals and polymers. Taffeta woven 100 % wool. For magnetic fixation on MD-Disc

40500077	200 mm (8") dia. 5 pcs.
40500078	250 mm (10") dia. 5 pcs.
40500079	300 mm (12") dia. 5 pcs.
40500152	350 mm (14") dia. 5 pcs.

MD-Mol APS

Polishing cloth to be used on automatic preparation systems for polishing of ferrous and non-ferrous metals and polymers. Taffeta woven 100 % wool. For magnetic fixation on MD-Disc

40500155	300 mm (12") dia. 5 pcs.
40500156	350 mm (14") dia. 5 pcs.

MD-Plus

Polishing cloth for one step polishing of sintered carbides and steels. Synthetic nap. For magnetic fixation on MD-Disc

40500089	200 mm (8") dia. 5 pcs.
40500090	250 mm (10") dia. 5 pcs.
40500091	300 mm (12") dia. 5 pcs.
40500151	350 mm (14") dia. 5 pcs.

MD-Floc

Polishing cloth for polishing of all materials. Short synthetic nap. For magnetic fixation on MD-Disc

40500403	200 mm (8") dia. 5 pcs.
40500404	250 mm (10") dia. 5 pcs.
40500405	300 mm (12") dia. 5 pcs.
40500419	350 mm (14") dia. 5 pcs.

MD-Nap

Polishing cloth for final polishing of all materials. Short synthetic nap. For magnetic fixation on MD-Disc

40500080	200 mm (8") dia. 5 pcs.
40500081	250 mm (10") dia. 5 pcs.
40500082	300 mm (12") dia. 5 pcs.
40500153	350 mm (14") dia. 5 pcs.

MD-Chem

Polishing cloth for final polishing of all materials. Porous neoprene. For magnetic fixation on MD-Disc

40500092	200 mm (8") dia. 5 pcs.
40500093	250 mm (10") dia. 5 pcs.
40500094	300 mm (12") dia. 5 pcs.
40500154	350 mm (14") dia. 5 pcs.

MD-Chem NonStick

Polishing cloth for final polishing of large specimens. Porous neoprene. For magnetic fixation on MD-Disc

40500410	300 mm (12") dia. 5 pcs.
----------	--------------------------



DP/OP-Polishing Cloths



DP-Plan

Polishing cloth for fine grinding of soft metals and pre-polishing of hard materials. Is used for diamond with particle size 15 - 3 μm . Coated woven polyester. Self-adhesive

40500200	200 mm (8") dia. 5 pcs.
40500201	250 mm (10") dia. 5 pcs.
40500202	300 mm (12") dia. 5 pcs.

DP-Pan

Polishing cloth for fine grinding of soft metals and pre-polishing of hard and brittle materials. Impregnated non-woven technical textile. Self-adhesive

40500161	200 mm (8") dia. 5 pcs.
40500162	250 mm (10") dia. 5 pcs.
40500163	300 mm (12") dia. 5 pcs.

DP-Sat

Polishing cloth for fine grinding and polishing of ferrous metals, non-ferrous metals, coatings and plastics. Is used for diamond with particle size 9 - 3 μm . Woven acetate. Self-adhesive

40500216	200 mm (8") dia. 5 pcs.
40500217	250 mm (10") dia. 5 pcs.
40500218	300 mm (12") dia. 5 pcs.

DP-Dur

Polishing cloth for fine grinding and polishing of ferrous and non-ferrous metals, coatings and plastics. Is used for diamond with particle size 9 - 1 μm . Satin woven natural silk. Self-adhesive

40500208	200 mm (8") dia. 5 pcs.
40500209	250 mm (10") dia. 5 pcs.
40500210	300 mm (12") dia. 5 pcs.

DP-Dac

Polishing cloth for polishing of all materials. Is used for diamond with particle size 9 - 3 μm . Satin woven acetate. Self-adhesive

40500212	200 mm (8") dia. 5 pcs.
40500213	250 mm (10") dia. 5 pcs.
40500214	300 mm (12") dia. 5 pcs.

DP-Mol

Polishing cloth for polishing of ferrous and non-ferrous metals and polymers. Taffeta woven 100 % wool. Self-adhesive

40500220	200 mm (8") dia. 5 pcs.
40500221	250 mm (10") dia. 5 pcs.
40500222	300 mm (12") dia. 5 pcs.

DP-Plus

Polishing cloth for one step polishing of sintered carbides and steels. Synthetic nap. Self-adhesive

40500224	200 mm (8") dia. 5 pcs.
40500225	250 mm (10") dia. 5 pcs.
40500226	300 mm (12") dia. 5 pcs.



DP-Floc

Polishing cloth for final polishing of all materials. Short synthetic nap. Self-adhesive

40500228	200 mm (8") dia. 5 pcs.
40500229	250 mm (10") dia. 5 pcs.
40500230	300 mm (12") dia. 5 pcs.

DP-Nap

Polishing cloth for final polishing of all materials. Short synthetic nap. Self-adhesive

40500232	200 mm (8") dia. 5 pcs.
40500233	250 mm (10") dia. 5 pcs.
40500234	300 mm (12") dia. 5 pcs.

OP-Felt

Polishing cloth for polishing of ferrous and non-ferrous metals. Is used for alumina with particle size $\leq 9 \mu\text{m}$. Thick wool felt. Self-adhesive

40500300	200 mm (8") dia. 5 pcs.
40500301	250 mm (10") dia. 5 pcs.
40500302	300 mm (12") dia. 5 pcs.

OP-Nat

Polishing cloth for polishing of ferrous metals. Is used for alumina with particle size $\leq 9 \mu\text{m}$. Woven wool felt. Self-adhesive

40500304	200 mm (8") dia. 5 pcs.
40500305	250 mm (10") dia. 5 pcs.
40500306	300 mm (12") dia. 5 pcs.

OP-Chem

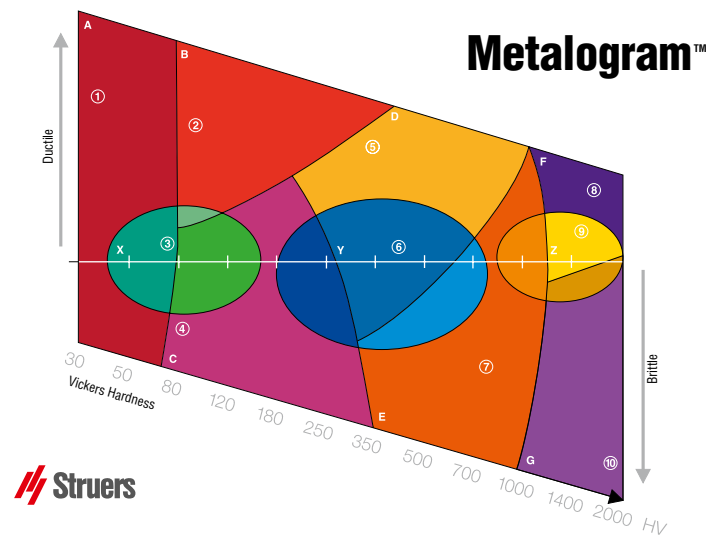
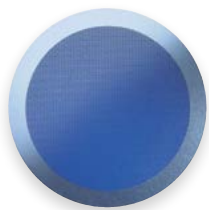
Polishing cloth for final polishing of all materials. Is used for oxide polishing with particle size $< 1 \mu\text{m}$. Porous neoprene. Self-adhesive

40500308	200 mm (8") dia. 5 pcs.
40500309	250 mm (10") dia. 5 pcs.
40500310	300 mm (12") dia. 5 pcs.

MD-Rondo

Adapter disc for application of self-adhesive consumables to MD-Disc.

40503000	200 mm (8") dia. 5 pcs.
40503001	250 mm (10") dia. 5 pcs.
40503002	300 mm (12") dia. 5 pcs.
40503082	350 mm (14") dia. 5 pcs.



Diamond Products



DiaPro	
DiaPro Pan 15 µm	
For high-performance materialographic pre-polishing on MD-Pan and DP-Pan. Stable diamond suspension containing a unique mixture of high-performance diamonds and cooling lubricant. Apply DiaPro to achieve the correct level of lubrication.	
40600375	500 ml
40600376	5 l
DiaPro Allegro/Largo 9 µm	
For high-performance materialographic fine grinding on MD-Allegro and MD-Largo. Stable diamond suspension containing a unique mixture of high-performance diamonds and cooling lubricant. Apply DiaPro to achieve the correct level of lubrication.	
40600369	500 ml
40600370	5 l
DiaPro Plan 9 µm	
For high-performance materialographic fine grinding on MD-Plan and DP-Plan. Stable diamond suspension containing a unique mixture of high-performance diamonds and cooling lubricant. Apply DiaPro to achieve the correct level of lubrication. Does not contain solvents.	
40600385	500 ml
40600386	5 l
DiaPro Sat 6 µm	
For high-performance materialographic polishing on MD-Sat and DP-Sat. Stable diamond suspension containing a unique mixture of high-performance diamonds and cooling lubricant. Apply DiaPro to achieve the correct level of lubrication.	
40600377	500 ml
40600378	5 l
DiaPro Largo 3 µm	
For high-performance materialographic polishing on MD-Largo. Stable diamond suspension containing a unique mixture of high-performance diamonds and cooling lubricant. Apply DiaPro to achieve the correct level of lubrication. Does not contain solvents.	
40600391	500 ml
40600392	5 l
DiaPro Mol B 3 µm	
For high-performance materialographic polishing of soft materials (>150 HV) on MD-Mol and DP-Mol. Stable diamond suspension containing a unique mixture of high-performance diamonds and cooling lubricant. Apply DiaPro to achieve the correct level of lubrication.	
40600379	500 ml
40600380	5 l
DiaPro Mol R 3 µm	
For high-performance materialographic polishing of soft materials (<150 HV) on MD-Mol and DP-Mol. Stable diamond suspension containing a unique mixture of high-performance diamonds and lubricant. Apply DiaPro to achieve the correct level of lubrication.	
40600393	500 ml
40600394	5 l
DiaPro Dur 3 µm	
For high-performance materialographic polishing on MD-Dur and DP-Dur. Stable diamond suspension containing a unique mixture of high-performance diamonds and cooling lubricant. Apply DiaPro to achieve the correct level of lubrication. Does not contain solvents	
40600395	500 ml
40600396	5 l
DiaPro Dac 3 µm	
For high-performance materialographic polishing on MD-Dac and DP-Dac. Stable water-based diamond suspension containing a unique mixture of high-performance diamonds and cooling lubricant. Apply DiaPro to achieve the correct level of lubrication.	
40600371	500 ml
40600372	5 l



DiaPro Plus 3 µm

For high-performance materialographic polishing on MD-Plus and DP-Plus. Stable diamond suspension containing a unique mixture of high-performance diamonds and cooling lubricant. Apply DiaPro to achieve the correct level of lubrication. Does not contain solvents.

40600387 500 ml

40600388 5 l

DiaPro Flocc 3 µm

For high-performance materialographic polishing on MD-Floc and DP-Floc. Stable diamond suspension containing a unique mixture of high-performance diamonds and cooling lubricant. Apply DiaPro to achieve the correct level of lubrication. Does not contain solvents.

40600389 500 ml

40600390 5 l

DiaPro Dur 1 µm

For high-performance materialographic polishing on MD-Dur and DP-Dur. Stable diamond suspension containing a unique mixture of high-performance diamonds and cooling lubricant. Apply DiaPro to achieve the correct level of lubrication.

40600381 500 ml

40600382 5 l

DiaPro Nap B 1 µm

For high-performance materialographic polishing of hard materials (>150 HV) on MD-Nap and DP-Nap. Stable water-based diamond suspension containing a unique mixture of high-performance diamonds and cooling lubricant. Apply DiaPro to achieve the correct level of lubrication.

40600373 500 ml

40600374 5 l

DiaPro Nap R 1 µm

For high-performance materialographic polishing of soft materials (<150 HV) on MD-Nap and DP-Nap. Stable diamond suspension containing a unique mixture of high-performance diamonds and lubricant. Apply DiaPro to achieve the correct level of lubrication. Does not contain solvents.

40600397 500 ml

40600398 5 l

DiaPro Nap ¼ µm

For high-performance materialographic polishing on MD-Nap and DP-Nap. Stable diamond suspension containing a unique mixture of high-performance diamonds and cooling lubricant. Apply DiaPro to achieve the correct level of lubrication.

40600383 500 ml

40600384 5 l

DP-Suspension P

Stable water-based polycrystalline diamond suspension in pump bottle for manual application.

To be used in combination with DP-Lubricants. Lubricants ensure correct cooling and smearing of the material surface.

40600229 1 µm. 125 ml

40600228 3 µm. 125 ml

40600227 6 µm. 125 ml

High performance diamond product containing exclusively polycrystalline diamonds. Stable suspension, designed for automatic dosing machines.

40600364 0.1 µm. 500 ml

40600363 ¼ µm. 500 ml

40600297 ¼ µm. 2.5 l

40600362 1 µm. 500 ml

40600251 1 µm. 2.5 l

40600342 1 µm. 5 l

40600361 3 µm. 500 ml

40600250 3 µm. 2.5 l

40600341 3 µm. 5 l

40600360 6 µm. 500 ml





DP-Suspension P

High performance diamond product containing exclusively polycrystalline diamonds. Stable suspension, designed for automatic dosing machines

40600249	6 µm. 2.5 l
40600340	6 µm. 5 l
40600359	9 µm. 500 ml
40600248	9 µm. 2.5 l
40600339	9 µm. 5 l
40600358	15 µm. 500 ml
40600247	15 µm. 2.5 l

DP-Suspension M

High performance diamond product containing monocrystalline diamonds. Stable suspension, designed for automatic dosing machines

40600357	1 µm. 500 ml
40600256	1 µm. 2.5 l
40600346	1 µm. 5 l
40600356	3 µm. 500 ml
40600255	3 µm. 2.5 l
40600345	3 µm. 5 l
40600355	6 µm. 500 ml
40600254	6 µm. 2.5 l
40600344	6 µm. 5 l
40600354	9 µm. 500 ml
40600253	9 µm. 2.5 l
40600343	9 µm. 5 l
40600353	15 µm. 500 ml
40600252	15 µm. 2.5 l



DP-Suspension A

High performance diamond product containing polycrystalline diamonds. Alcohol based. Water content < 0.5 % w/w. For highest efficiency in materiallographic polishing of water sensitive materials. Stable suspension

40600352	*** ¼ µm. 500 ml
40600351	*** 1 µm. 500 ml
40600350	*** 3 µm. 500 ml

High performance diamond product containing M+ diamonds. Alcohol based. Water content < 0.5 % w/w. For highest efficiency in materiallographic fine grinding and polishing of water sensitive materials. Stable suspension

40600349	*** 6 µm. 500 ml
40600348	*** 9 µm. 500 ml
40600347	*** 15 µm. 500 ml

DiaDuo

DiaDuo-2

All-purpose diamond suspension for materiallographic fine grinding and polishing. Diamond suspension and cooling lubricant combined into one product. Does not contain solvents

40600036	1 µm. White. 500 ml
40600041	1 µm. White. 5 l
40600037	3 µm. Blue. 500 ml
40600042	3 µm. Blue. 5 l
40600038	6 µm. Yellow. 500 ml
40600043	6 µm. Yellow. 5 l
40600039	9 µm. Grey. 500 ml
40600044	9 µm. Grey. 5 l
40600040	15 µm. Green. 500 ml
40600045	15 µm. Green. 5 l



DP-Spray P

High performance diamond product containing exclusively polycrystalline diamonds. In spray can

40600144	*** ¼ µm. 150 ml
40600145	*** 1 µm. 150 ml
40600146	*** 3 µm. 150 ml
40600147	*** 6 µm. 150 ml
40600148	*** 9 µm. 150 ml
40600149	*** 15 µm. 150 ml
40600150	*** 35 µm. 150 ml

DP-Spray M

High performance diamond product containing monocrystalline diamonds. In spray can

40600151	*** 1 µm. 150 ml
40600152	*** 3 µm. 150 ml
40600153	*** 6 µm. 150 ml
40600154	*** 9 µm. 150 ml
40600155	*** 15 µm. 150 ml

DP-Stick P

Diamond wax in stick applicator. To be used in combination with DP-Lubricants. Lubricants ensure correct cooling and lubricating of the material surface

40600313	¼ µm. 24 g
40600312	1 µm. 24 g
40600311	3 µm. 24 g
40600310	6 µm. 24 g
40600309	9 µm. 24 g
40600308	15 µm. 24 g

DP-Paste P

High performance diamond product containing exclusively polycrystalline diamonds. In cartridge

40600028	¼ µm. 10 g
40600027	1 µm. 10 g
40600026	3 µm. 10 g
40600025	6 µm. 10 g
40600024	9 µm. 10 g
40600023	15 µm. 10 g

DP-Paste M

High performance diamond product containing monocrystalline diamonds. In cartridge

40600020	¼ µm. 10 g
40600019	1 µm. 10 g
40600018	3 µm. 10 g
40600017	6 µm. 10 g
40600016	9 µm. 10 g
40600015	15 µm. 10 g



Lubricants



DP-Lubricant	
DP-Lubricant Green Cooling and lubricating liquid for fine grinding and diamond polishing of most materials. Water based	
40700023	1 l
40700024	5 l
40700055	10 l
DP-Lubricant Blue Cooling and lubricating liquid for fine grinding and diamond polishing of most materials. Alcohol-based with ethanediol	
40700005	*** 1 l
40700006	*** 5 l
40700056	*** 10 l
DP-Lubricant Purple Cooling and lubricating liquid for fine grinding and diamond polishing of most materials. Alcohol-based with propylene glycol	
40700059	*** 1 l
40700060	*** 5 l
40700061	*** 10 l
DP-Lubricant Red Lubricating liquid for final diamond polishing of softer materials. Water and oil based	
40700025	1 l
40700057	5 l
40700058	10 l
DP-Lubricant Brown Cooling and lubricating liquid for fine grinding and diamond polishing of most materials. Alcohol-based with propylene glycol	
40700028	*** 1 l
DP-Lubricant Yellow Lubricating liquid for final diamond polishing of softer water-sensitive materials. Alcohol-based	
40700030	*** 1 l
Others	
Dosing Gun For dosing a specific amount of all diamond suspensions and lubricants. Non-aerosol pressurized dosing bottle	
40700031	500 ml
Pump Bottle For manual dispensing of diamond suspension or lubricant	
40700068	150 ml
Squeeze Bottle For manual dosing of diamond suspension or lubricant	
40700032	250 ml
Final Polishing	
OP-S NonDry Non-drying colloidal silica suspension for final polishing. Suitable for mixing with chemical reagents for polishing of resistant materials. Ready to use	
40700064	0.04 µm. 1 l
40700065	0.04 µm. 5 l
OP-S Standard colloidal silica suspension for final polishing. Suitable for mixing with chemical reagents for polishing of resistant materials. Ready to use	
40700000	0.04 µm. 1 l
40700001	0.04 µm. 5 l



OP-U NonDry

Non-drying colloidal silica suspension for final polishing of all materials. Ready to use

40700066	0.04 µm. 1 l
40700067	0.04 µm. 5 l

OP-U

Standard colloidal silica suspension for final polishing of all materials. Ready to use

40700002	0.04 µm. 1 l
40700003	0.04 µm. 5 l

OP-A

OP-A

Acidic alumina suspension for final polishing of low- and high-alloy steels, nickel-base alloys and ceramics. Concentrated

40700021	500 ml
----------	--------

AP-Products

AP-A Powder

Agglomerated alpha alumina powder for polishing. To be mixed with demineralized water before use

40700049	0.3 µm. 1 kg
40700048	1 µm. 1 kg
40700047	5 µm. 1 kg

AP-A Suspension

Agglomerated gamma alumina suspension for polishing. Stabilised and highly concentrated. Can be used directly or diluted with 3 to 5 parts of demineralized water

40700046	0.05 µm. 500 ml
----------	-----------------

Agglomerated alpha alumina suspension for polishing. Stabilised and highly concentrated. Can be used directly or diluted with 3 to 5 parts of demineralized water

40700045	0.1 µm. 500 ml
40700044	0.3 µm. 500 ml
40700043	1 µm. 500 ml
40700042	5 µm. 500 ml

AP-D Powder

Deagglomerated gamma alumina powder for polishing. To be mixed with demineralized water before use

40700041	0.05 µm. 1 kg
----------	---------------

Deagglomerated alpha alumina powder for polishing. To be mixed with demineralized water before use

40700040	0.1 µm. 1 kg
40700039	0.3 µm. 1 kg
40700038	1 µm. 1 kg

AP-D Suspension

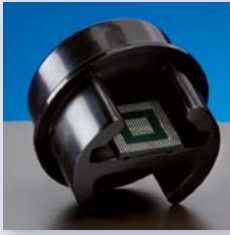
Deagglomerated alpha alumina suspension for polishing. Stabilised and highly concentrated. Can be used directly or diluted with 3 to 5 parts of demineralized water

40700036	0.1 µm. 500 ml
40700035	0.3 µm. 500 ml
40700034	1 µm. 500 ml



Using the TargetSystem - Automatic target preparation in few, simple steps

1



Attach Specimen

In seconds, the specimen is glued directly into a single-use cross-sectioning jig, specimen chair. Mounting is not a requirement, but may be done

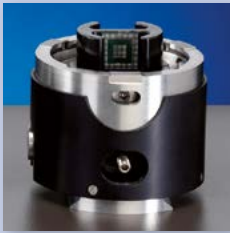
6



Mount TargetGrip in TargetMaster

Lock TargetGrip into specimen mover of TargetMaster

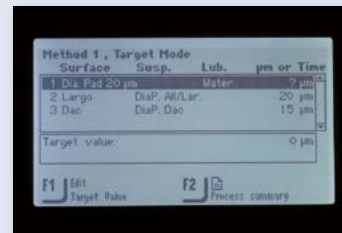
2



Lock into holder

The specimen chair is locked into TargetGrip, a precision specimen holder

7



Select method

Select a suitable method on the automatic dosing system, and transmit to TargetMaster

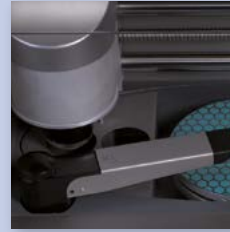
3



Place in set-up station

TargetGrip is locked into either TargetZ (for visible targets) or TargetX (for hidden targets)

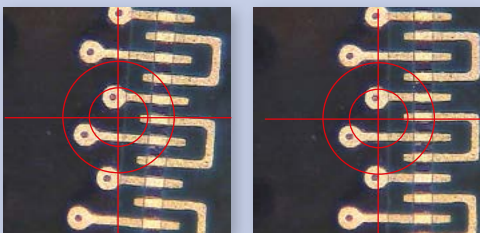
8



Grind/polish

Automatic preparation to pre-selected target

4



Align

Real-time alignment of target

9



Inspect

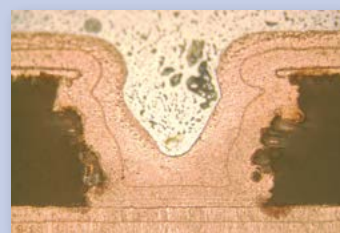
Inspect the specimen holder under microscope

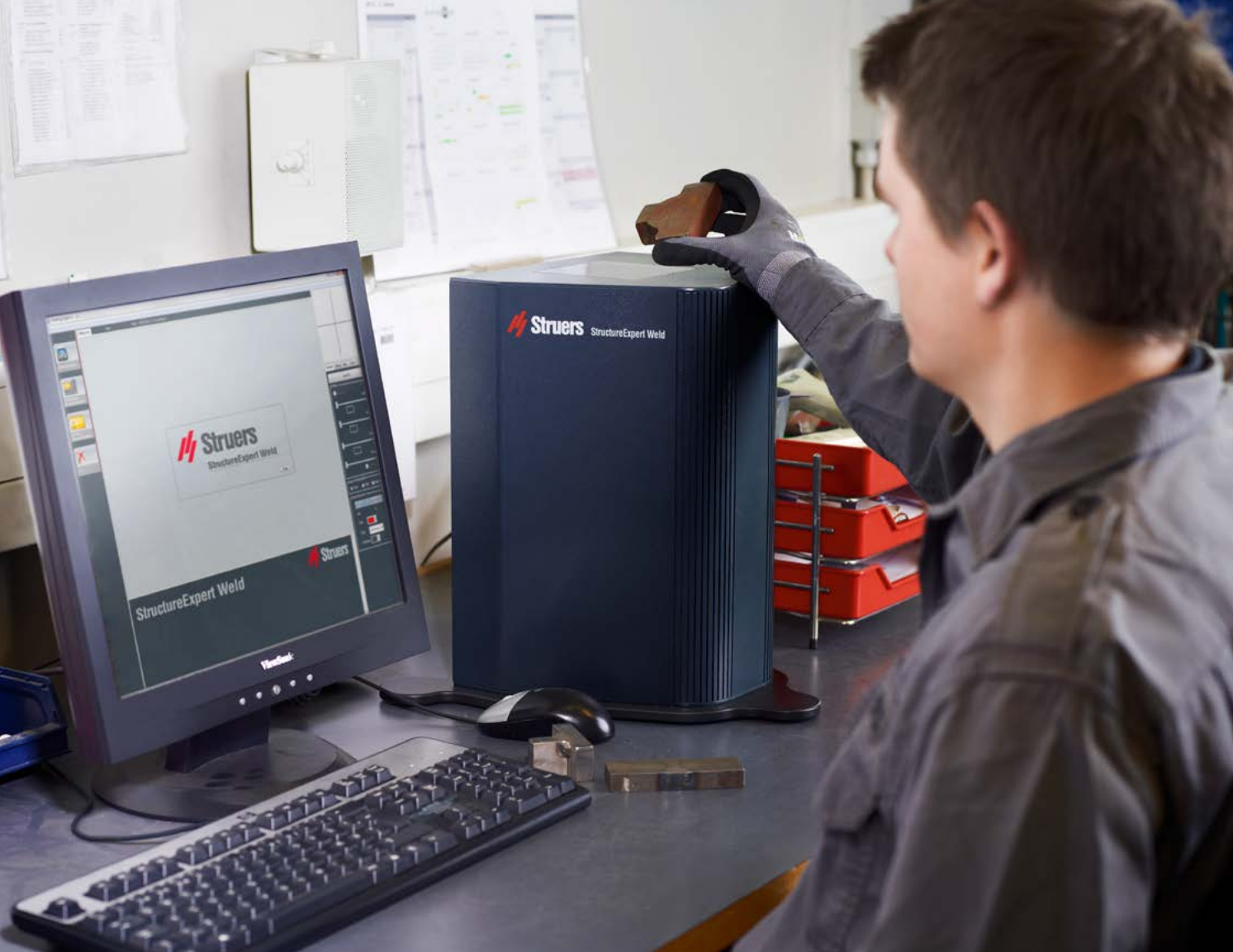
5



Measure

Measurement of distance to target. Measured data is transferred to TargetMaster





Miscellaneous

Struers manufactures a complete range of equipment and consumables for controlled material removal, electrolytic preparation, non-destructive preparation and mineralogy.

Weld analysis

With the StructureExpert Weld Struers offers the only stand-alone imaging tool designed for efficient and accurate weld bead control. Unique inverted optical system, automatic lighting, focus and calibration eliminate time-consuming manual processes and measurement errors. Dedicated weld control software, measurement tools and report templates make weld quality control easy, accurate and efficient.

Controlled material removal

We offer a range of controlled material removal products to assist you in removing a specific volume or depth of material. With help from Struers, you can achieve the exact level of control and the configuration you need, in both manual and automated specimen preparation, for both visible and hidden targets.

Electrolytic preparation

Avoid mechanical deformation and still maintain efficiency in the preparation of metallic specimens. Struers electrolytic polishing equipment and consumables give you optimal deformation-free specimen preparation.

Non-destructive preparation

For many applications it is either required or more economical to carry out the testing in a non-destructive way in the field. A high quality replica of the prepared surface can be achieved, allowing a complete evaluation of the surface.

Mineralogy

Struers' range of equipment and consumables for the preparation of mineralogical, geological and ceramic specimens covers the entire preparation process – from initial cutting to the finished thin section or polished section, ready for microscopic examination.

Controlled Material Removal

TargetSystem Consumables



	30 mm dia. Sample Chair 30 mm dia. adapter for cross-sectioning on TargetMaster. To be inserted into TargetGrip (05756916). Max. specimen size 23 x 20.5 mm. Disposable
05756914	30 mm dia. 50 pcs.
	40 mm dia. Sample Chair 40 mm dia. adapter for cross-sectioning on TargetMaster. To be inserted into TargetGrip (05756901). Max. specimen size 29 x 20.5 mm. Disposable
05756908	40 mm dia. 50 pcs.
	40 mm Elevated Sample Chair 40 mm adapter for cross-sectioning on TargetMaster (disposable). External sample platform for use with TargetX. Max. sample size 5 x 15 mm. Use of this sample chair requires modification of TargetMaster.
05756917	40 mm 50 pcs.
	Mould Insert Mould insert for use with 40 mm dia. mount cups Max specimen size 35 x 20 mm
05756912	40 mm dia. 50 pcs.
	Resin Barrier Metal labels to be used together with Sample chair (05756908 and 05756914)
05756907	50 pcs.



	ViaKit / -Basic Consumables
	ViaKit End Caps End caps for use with ViaKit Mounting Rings (40300055)
40300056	250 pcs.
	ViaKit Positioning Pins Positioning pins, 1.98 mm dia., length 43 mm. Suitable for use with ViaKit
40300057	500 pcs.



	Acc. for ViaSampler
	Support block for ViaSampler. 3 pcs. Routing well insert for support of thin and flexible boards
40300073	59x59 mm. 3 psc.
	Router-Cutter Router-cutter tool for ViaSampler
40300077	1.98 mm dia
40300078	1.96 mm dia
40300079	1.97 mm dia.

Electrolytes



	Electrolytes
	Electrolyte A2 For electrolytic polishing of steel, stainless steel, aluminium and aluminium alloys, nickel alloys, tin and titanium. All-round electrolyte for LectroPol-, Polectrol and Movipol-
40900008	*** 1 l
	Electrolyte A3 For electrolytic polishing of molybdenum, titanium, zirconium and vanadium. For LectroPol-, Polectrol, Movipol- and Tenupol-
40900011	*** 1 l
	Electrolyte D2 Electrolyte for copper and copper alloys. For LectroPol-, Polectrol, Movipol- and Tenupol-
40900032	*** 1 l

Non-Destructive Testing



Grinding

Flapper Wheel

For coarse grinding with Transpol

40800053 Grit 80. 40 mm (1½") dia. x 10 mm, shaft 6 mm dia. 5 pcs.

Silicon Carbide Paper

Silicon carbide grinding paper, for grinding on Transpol.
Self-adhesive

40400049 Grit 60. 32 mm (1¼") dia. 100 pcs.

40400129 Grit 120. 32 mm (1¼") dia. 100 pcs.

40400130 Grit 240. 32 mm (1¼") dia. 100 pcs.

40400131 Grit 500. 32 mm (1¼") dia. 100 pcs.



Polishing Cloth

DP-Dur

Cloth for diamond polishing. For use with Transpol. Satin woven silk.
Self-adhesive

40500040 32 mm (1¼") dia. 25 pcs.

DP-Mol

Cloth for diamond polishing. For use with Transpol. Woven wool.
Self-adhesive

40500041 32 mm (1¼") dia. 25 pcs.

DP-Nap

Cloth for diamond polishing. For use with Transpol. Short synthetic nap.
Self-adhesive

40500042 32 mm (1¼") dia. 25 pcs.

OP-Felt

Cloth for oxide polishing. For use with Transpol. Thick felt.
Self-adhesive

40500043 32 mm (1¼") dia. 25 pcs.

DP-Dac

Cloth for diamond polishing. For use with Transpol. Satin woven acetate.
Self-adhesive

40500145 32 mm (1¼") dia. 25 pcs.

Polishing Chamber

Flexible type. For Movipol-3 and -5.

03926904 50 pcs.



Transcopy

Transcopy Kit

For making replica of polished and etched surfaces. Self-adhesive reflective Transcopy Replica Foil creates a permanent replication of microstructures, cracks and defects for future analysis in the laboratory

40900090 *** 50 pcs. 20 x 30 mm replica foils, 40 ml liquid, spray nozzle, pipette and microscope slides

Transcopy Liquid

For Transcopy Replica Foils (40900091)

40900092 *** 40 ml

Transcopy Replica Foils

Reflective metallographic replica foils. Self-adhesive. Transcopy Liquid (40900092) is ordered separately

40900091 20 x 30 mm. 50 pcs.





RepliSet 50 ml Cartridges

RepliSet-F1

Replication system. Particularly useful for replicating horizontal or sloping surfaces in low temperature conditions or where rapid results are required. Fluid rapid curing compound with working life of 0.5 - 1 min. and curing time of 4 min. at 25° C. Dispensing gun (40900066) and static-mixing nozzles (40900088) are ordered separately

40900069 1 cartridge of 50 ml

40900047 5 cartridges of 50 ml

RepliSet-F5

Replication system. General-purpose material. Particularly useful for replicating horizontal or sloping surfaces in normal or high temperature conditions. Fluid fast curing compound with working life of 5 min. and curing time of 18 min. at 25° C. Dispensing gun (40900066) and static-mixing nozzles (40900088) are ordered separately

40900068 1 cartridge of 50 ml

40900046 5 cartridges of 50 ml

RepliSet-T1

Replication system. Particularly useful for replicating vertical or overhead surfaces in low temperature conditions or where rapid results are required. Thixotropic rapid curing compound with working life of 0.5 - 1 min. and curing time of 4 min. at 25° C. Dispensing gun (40900066) and static-mixing nozzles (40900088) are ordered separately

40900071 1 cartridge of 50 ml

40900049 5 cartridges of 50 ml

RepliSet-T3

Replication system. General-purpose material. Particularly useful for replicating vertical or overhead surfaces in normal or high temperature conditions. Thixotropic fast curing compound with working life of 3 min. and curing time of 10 min. at 25° C. Dispensing gun (40900066) and static-mixing nozzles (40900088) are ordered separately

40900070 1 cartridge of 50 ml

40900048 5 cartridges of 50 ml

RepliSet-GF1

Replication system especially for comparatory macroscopy and metrology. Particularly useful for replicating horizontal or sloping surfaces and filling holes. Fluid rapid curing compound with working life of 0.5 - 1 min. and curing time of 4 min. at 25° C. Dispensing gun (40900066) and static-mixing nozzles (40900088) are ordered separately

40900078 1 cartridge of 50 ml

40900076 5 cartridges of 50 ml

RepliSet-GT1

Replication system especially for comparatory macroscopy and metrology. Particularly useful for replicating vertical or overhead surfaces. Thixotropic rapid curing compound with working life of 0.5 - 1 min. and curing time of 4 min. at 25° C. Dispensing gun (40900066) and static-mixing nozzles (40900088) are ordered separately

40900079 1 cartridge of 50 ml

40900077 5 cartridges of 50 ml

RepliFix

RepliFix-2

Specially formulated hand mixed fast curing two-part silicone rubber. Bonds to RepliSet. Particularly useful in combination with RepliSet for producing a rigid backing. It can be used directly for moulding of surface shape for profile measurement. For low temperature conditions or where rapid results are required. Working life of 2-3 min. and curing time of 10 min. at 25° C

40900084 250 g RepliFix-2, Yellow, 250 g RepliFix-2, Blue, protective gloves

RepliFix-20

Specially formulated hand mixed two-part silicone rubber. Bonds to RepliSet. Particularly useful in combination with RepliSet for producing a rigid backing. It can be used directly for moulding of surface shape for profile measurement. For high temperature conditions or for taking replicas of complicated geometrics or large areas. Working life of 20 min. and curing time of 60 min. at 25° C

40900086 250 g RepliFix-20, Yellow, 250 g RepliFix-20, Blue, protective gloves





Static-mixing Nozzles

40900088 For RepliSet replication compound in 50 ml cartridges
35 pcs.

Backing Material, Nozzle Tips

Backing Slides

For RepliSet replication system. A flexible plastic slide, which bonds to the replica and ensures a flat back to the replica. For levelling of replicas to assist microscopic examination, as dimensional support for metrology and for well-ordered labelling, transport and storage of RepliSet replicas

40900087 26 x 76 x 1 mm. 50 pcs.

40900064 58 x 40 x 1 mm. 50 pcs.

Backing Paper

For RepliSet replication system. Bonds to the replica and facilitates labelling, handling and the levelling of replicas to assist microscopic examination

40900062 60 x 70 mm. 100 pcs.

For RepliSet replication system. Bonds to the replica and facilitates labelling, handling and the levelling of replicas to assist microscopic examination. For cutting up to the required size

40900063 A4 (210 x 297 mm). 10 pcs.

Nozzle Tips

For replicating flat surfaces using RepliSet (particularly with RepliSet-T types). Fishtail spreaders, 10 mm width. To be mounted on 50 ml static-mixing nozzle (40900088)

40900089 30 pcs.

For replication small holes using RepliSet. Luer needle, 1 mm dia., 30 mm long. Reusable several times. To be mounted on 50 ml static-mixing nozzles (40900088)

40900060 10 pcs.

For replication larger holes using RepliSet. Flexible hose, 6 mm dia., 100 mm long. Reusable several times. To be mounted on 50 ml static-mixing nozzles (40900088)

40900061 10 pcs.

Mineralogy

Cup Wheels

See the Grinding Section

Cast Iron Disc for mineralogy

Concentrically grooved, cone-type disc for lapping mineralogical specimens on LaboPol-30/-60. Made of special SiC-resistant cast iron alloy.

06206917 300 mm (12") dia.

Concentrically grooved disc with driving pins, for lapping mineralogical specimens on LaboPol-35. Made of special SiC-resistant cast iron alloy.

40800059 300 mm (12") dia.

Silicon Carbide Powder

For lapping mineralogical or ceramic specimens. To be used on cast iron lapping disc

40701005 Grit 120. 500 g

40701006 Grit 220. 500 g

40701007 Grit 320. 500 g

40701008 Grit 400. 500 g

40701009 Grit 600. 500 g

40701010 Grit 800. 500 g

40701021 Grit 1000. 300 g

40701022 Grit 1200. 300 g



Glass Slides

Standard Slides

Standard Slides for thin sections, with ground edges

80100001 27 x 46 x 1.2-1.5 mm. 100 pcs.

40701018 28 x 48 mm. 100 pcs.

Microcover Glass

To be used for covering thin sections

40701020 24 x 32 mm. 100 pcs.



Adhesives

TriPod Wax

Removable resin for mounting of specimens on TriPod Specimen Mounts.

41000006 1 stick

Eukitt

Removable resin for fixation of cover glass on thin sections

41000004 *** 500 ml

General Purpose

Others

Adhesive Tape

To be used with specimen holder MAXAD (02606950), MAXSO (02606926), MAXSA (02606928), MAXON (02606927) or MAXAN (02606929). Double-sided adhesive tape in roll

49900044 38 mm wide. 25 m

Protecting Lacquer

For protecting the specimen surface.

49900012 *** 400 ml. In spray can

Cleaner

For heavy duty cleaning. Solopol (Krestopol).

49900027 4 tubes of 250 ml

Concentrated Soap Solution

To be used in Hexamatic, Prepamatic, TargetMaster, MAPS and for ultrasonic cleaning

49900000 1 l

Engraver Tip

Tungsten carbide tipped point for Engraver

40900043 1 pc.

Tape Kit

For electrolytic blanking of 3 mm / 2.3 mm specimens to be electrolytically thinned for Tenupol-

40900041 1 roll of tape and 1 hole punch

Disposable Bowl Liner

Disposable bowl liner for Polishing Mashines

49900052 For Tegramin-30 and -25, 5 pcs.

49900056 For Tegramin-20, 5 pcs

49900041 For TegraPol-11, -15 and LaboPol-1, -2, -4, -5, -6, 5 pcs.

49900061 For LaboPol-20, 5 pcs

49900062 For LaboPol-30/-60, 5 pcs

Protection caps

Plastic caps for cylindrical specimens or mounts

49900033 25 mm dia. 100 pcs.

49900034 30 mm dia. 100 pcs.

49900063 1¼" dia. 100 pcs.

49900035 40 mm dia. 100 pcs.

49900036 50 mm dia. 100 pcs.



Struers ServiceGuard is a comprehensive range of technical services and training designed to help you guard the availability, predictability and uptime of your Struers equipment.

Service Plans

Strategic planning that prevents unexpected issues, protects uptime and assures performance

By choosing a customized Service Plan, you ensure regular preventive maintenance that enables you to increase uptime and predictability of test results until the next maintenance visit. For example, you can opt for performance assurance and rapid specialist support.

Our experienced experts help you determine the service level and content that best suit your particular requirements. You can choose between three levels of Service Plans.



Service Packages

Forging a broader understanding

A complete, all-in-one Service Package contains essential services and training that help you ensure output to specification via rapid start-up, optimize your processes and ensure maximum uptime.

You can choose between three different Service Packages and combine them with Single Services according to your needs.



3

PACKAGES

Single Services

A single service resolves an isolated issue

Single services focus on individual tasks that usually become necessary as the result of an issue affecting quality, efficiency or uptime. You can book one or more single services at any time depending on your needs.



12

SERVICES

Read more on www.struers.com under Technical Service.

Conversions

Metric and Imperial

	Metric	to		Imperial
1.000	Newton	=	0.225	Pounds / Force
1.000	Micron	=	0.039	Mil
1.000	Millimetre	=	0.039	Inch
1.000	Liter	=	0.264	Gallons
1.000	Milliliter	=	0.034	Ounce
1.000	Bar	=	14.500	PSI
1.000	Square centimeter	=	0.155	Square Inch
1.000	Kilogram	=	2.205	Pounds

	Imperial	to		Metric
1.000	Pounds / Force	=	4.448	Newtons
1.000	Mil	=	25.400	Microns
1.000	Inch	=	25.400	Millimeters
1.000	Gallons	=	3.785	Liters
1.000	Ounce	=	29.573	Millimeters
1.000	PSI	=	0.069	Bar
1.000	Square Inch	=	6.452	Square Centimeters
1.000	Pound	=	0.454	Kilograms

Grit / Grain size comparison*

Struers grinding papers are classified according to FEPA Standards (Federation of the European Producers of Abrasives). US Grit Numbers and those specified by FEPA and corresponding average grain diameter in microns are shown.

FEPA P (Europe)	# 80	# 120	# 180	# 220	# 320	# 500	# 800	# 1000	# 1200	# 2000	# 4000**
ANSI / CAMI (US)	# 80	# 120	# 180	# 220	# 280	# 360	# 400	# 500	# 600	# 1000	# 1200
Grain size	200 µm	125 µm	82 µm	68 µm	46 µm	30 µm	22 µm	18 µm	15 µm	10 µm	5 µm

*) Guideline values only

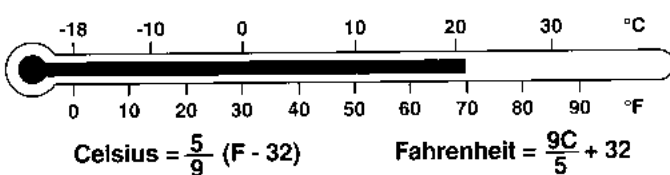
**) Not part of FEPA P standardization

RepliSet Compound Selection Guide

Surface facing	Temperature of surface	Working life	Recommended compound
Horizontal, sloping	> 20°C	Normal	RepliSet-F5
	< 20°C	Short	RepliSet-F1/GF1
Vertical, overhead	> 20°C	Normal	RepliSet-T3
	< 20°C	Short	RepliSet-T1/GT1



Temperature





Accessories

Struers offers a wide variety of tools and accessories, all developed with the main purpose of providing easier handling and more accurate specimen preparation.

Selected accessories

In this catalog you will find selected accessories. Among them, accessories for:

- **Mounting**
- **Grinding and polishing**
- **Automatic cleaning**
- **Non-Destructive preparation**
- **SystemAbele - Mineralogy**

Mounting



Cold Mounting Accessories

Wupty

06596901 Tool for pressing mounts out of FixiForm. Wupty can only be used with FixiForm, as we use the handles to secure it while pressing the mount out

Preparation discs



Discs with cone

MD-Disc with cone

For use on Tegramin and LaboPol. With cone for easy replacement.

06086401 For Tegramin-20 and LaboPol-20, 200 mm dia.

06086402 For Tegramin-25 and LaboPol-30/-60, 250 mm dia.

06086403 For Tegramin-30 and LaboPol-30/-60, 300 mm dia.

Wet Grinding Disc with cone

For use on LaboPol. With cone for easy replacement.

06206924 200 mm (8") dia.

06206932 230 mm (9") dia.

06206918 250 mm (10") dia.

06206919 305 mm (12") dia.



Discs with driving pins

MD-Disc with driving pins

Magnetic fixation disc for MD-System products

02426920 200 mm (8") dia.

02426919 250 mm (10") dia.

02426918 300 mm (12") dia.

02426933 350 mm (14") dia.

Wet Grinding Disc with driving pins

For use with plain back silicon carbide paper. With ring. Aluminium

02426935 200 mm (8") dia.

02426936 230 mm (9") dia.

02426915 250 mm (10") dia.



Magnetic Foils

Magnetic Foil

To be attached on standard aluminium preparation disc to transform it into a magnetic disc for the MD-System. Self-adhesive

40800113 200 mm (8") dia.

40800114 250 mm (10") dia.

40800115 300 mm (12") dia.

Automatic Cleaning



Levelling tool for Lavamin

Levelling tool

06236920 for adjusting retention rings on individual specimens for Lavamin. For round specimens 25 mm / 1"; 30 mm / 1¼"; 40 mm / 1½" and 50 mm / 2" dia.

Applicator for retention rings

To apply and adjust retention rings for use with Lavamin.

06236921 For specimens 25 mm / 1" dia.

06236922 For specimens 30 mm / 1¼" dia.

06236923 For specimens 40 mm / 1½" dia.

06236924 For specimens 50 mm / 2" dia.

Retention rings for Lavamin

Retention rings

To retain individual specimens in specimen mover plates for cleaning in Lavamin

06236910 25 mm / 1" dia. 15 pcs.

06236911 30 mm / 1¼" dia. 15 pcs.



06236912	40 mm / 1½" dia.15 pcs.
06236913	50 mm / 2" dia.15 pcs.
	Rubber mat To keep small and light specimens in place, for Tegramin-25, TegraForce and RotoForce specimen mover plates. For use with Lavamin.
06236925	For 140 mm dia. specimen mover plates To keep small and light specimens in place, for Tegramin-30 specimen mover plates. For use with Lavamin.
06236926	For 160 mm dia. specimen mover plates

Controlled Material Removal

	TriPod
	Parallel Sample Mounts, Stainless Steel 12.5 mm stainless steel sample mount for TriPod Polishing Fixture-P (04386201)
04386921	10 pcs.
	Parallel Sample Mounts, Aluminium 12.5 mm aluminium sample mount for TriPod Polishing Fixture-P (04386201)
04386922	10 pcs.
	Cross Section Sample Mounts, Stainless Steel 12.5 mm stainless steel sample mount for TriPod Polishing Fixture-X (04386202)
04386923	10 pcs.
	Cross Section Sample Mounts, Aluminium 12.5 mm aluminium sample mount for TriPod Polishing Fixture-X (04386202)
04386924	10 pcs.
	TriPod Supports Teflon feet for support of TriPod Polishing Fixture-X/-P. 04386202 or 04386201
04386925	2 pcs.

Non-Destructive Testing

	Others
	Case Aluminium carrying case for transporting the 50 ml RepliSet system. Foam rubber inserts have room for all necessities for field applications: 1 Dispensing gun, 5 new cartridges and 2 cartridges in use, 2 x 35 pcs. static-mixing nozzles, nozzle tips, backing paper, cleaning fluid and finished replicas. The content is ordered separately.
40900067	L x D x H = 445 x 156 x 330 mm
	Dispensing Gun Hand-operated dispensing gun for RepliSet
40900066	For 50 ml cartridges

General Purpose

	Engraver
	For marking of specimens. Complete with 1 hard point
00146121	1 x 110 V / 50-60 Hz
00146133	1 x 220 V / 50-60 Hz

	Laboratory Furniture
	MD-Concert Storage cabinet for 9 MD preparation surfaces in 300 mm (12"), 250 mm (10") or 200 mm (8") dia.
05306101	
	MD-Concertino Storage cabinet for 7 MD preparation surfaces in 200 mm (8") dia.
05306102	
	Storage Cabinet MEDCU For 10 MD preparation surfaces in 350 mm (14") dia.
05666001	
	Table unit for Discotom With compartment for recirculation cooling unit, drawer for tools and shelves for cut-off wheels. Width: 930 mm, depth: 950 mm, height: 800 mm.
06266101	
	Extension for table unit Can be mounted on both right and left hand side.
06266901	Width: 400 mm, depth 950 mm



Approximate Equivalent Hardness Scale Conversion

Vickers Hardness	Brinell Hardness 10 mm tungsten carbide ball Load 3000 kg	Rockwell Hardness		
		B scale 100 kg load	C scale 150 kg load	D scale 100 kg load
940			68.0	76.9
920			67.5	76.5
900			67.0	76.1
880	(767)		66.4	75.7
860	(757)		65.9	75.3
840	(745)		65.3	74.8
820	(733)		64.7	74.3
800	(722)		64.0	73.8
780	(710)		63.3	73.3
760	(698)		62.5	72.6
740	(684)		61.8	72.1
720	(670)		61.0	71.5
700	(656)		60.1	70.8
690	(647)		59.7	70.5
680	(638)		59.2	70.1
670	(630)		58.8	69.8
660	620		58.3	69.4
650	611		57.8	69.0
640	601		57.3	68.7
630	591		56.8	68.3
620	582		56.3	67.9
610	573		55.7	67.5
600	564		55.2	67.0
590	554		54.7	66.7
580	545		54.1	66.2
570	535		53.6	65.8
560	525		53.0	65.4
550	517		52.3	64.8
540	507		51.7	64.4
530	497		51.1	63.9
520	488		50.5	63.5
510	479		49.8	62.9
500	471		49.1	62.2
490	460		48.4	61.6
480	452		47.7	61.3
470	442		46.9	60.7
460	433		46.1	60.1
450	425		45.3	59.4
440	415		44.5	58.8
430	405		43.6	58.2
420	397		42.7	57.5

Vickers Hardness	Brinell Hardness 10 mm tungsten carbide ball Load 3000 kg	Rockwell Hardness		
		B scale 100 kg load	C scale 150 kg load	D scale 100 kg load
410	388		41.8	56.8
400	379		40.8	56.0
390	369		39.8	55.2
380	360	(110.0)	38.8	54.4
370	350		37.7	53.6
360	341	(109.0)	36.6	52.8
350	331		35.5	51.9
340	322	(108.0)	34.4	51.1
330	313		33.3	50.2
320	303	(107.0)	32.2	49.4
310	294		31.0	48.4
300	284	(105.5)	29.8	47.5
295	280		29.2	47.1
290	275	(104.5)	28.5	46.5
285	270		27.8	46.0
280	265	(103.5)	27.1	45.3
275	261		26.4	44.9
270	256	(102.0)	25.6	44.3
265	252		24.8	43.7
260	247	(101.0)	24.0	43.1
255	243		23.1	42.2
250	238	99.5	22.2	41.7
245	243		21.3	41.1
240	228	98.1	20.3	40.3
230	219	96.7	(18.0)	
220	209	95.0	(15.7)	
210	200	93.4	(13.4)	
200	190	91.5	(11.0)	
190	181	89.5	(8.5)	
180	171	87.1	(6.0)	
170	162	85.5	(3.0)	
160	152	81.7	(0.0)	
150	143	78.7		
140	133	75.0		
130	124	71.2		
120	114	66.7		
110	105	62.3		
100	95	56.2		
95	90	52.0		
90	86	48.0		
85	81	41.0		



Hardness Testing

Struers hardness testers are state-of-the-art software-controlled devices which enable Vickers, Knoop, Brinell and Rockwell hardness tests to be performed rapidly, accurately and reliably. Our hardness testers cover a unique test load range, suitable for many applications.

A wide selection of accessories

Struers hardness testers come with a wide selection of accessories designed to help you with your particular hardness testing operations. A broad range of indenters and test blocks are available.

Hardness Testing



Indenters	
Vickers Indenter	
	Standard Vickers indenter. For machines M1/M4/M5/V4/V5/VR5C/DuraPro-500/DuraJet/DuraVision
EMNDV28007S	For \geq HV 0.01, length 28 mm, dia. 6.5 mm. With accredited certificate according to EN ISO
EMNDV28007Z	For \geq HV 5, length 28 mm, dia. 6.5 mm. With accredited certificate according to EN ISO
EMIV1	Standard Vickers indenter for DuraScan. With accredited certificate according to EN ISO
EMIV2	Vickers indenter for DuraScan, non-magnetic. With accredited certificate according to EN ISO
Knoop Indenter	
EMNDK28007Z	Standard Knoop indenter. For machines M1/M4/M5/V4/V5/VR5C/DuraVision. With accredited certificate
EMIK1	Standard Knoop indenter for DuraScan. With accredited certificate according to EN ISO
EMIK2	Knoop indenter for DuraScan, non-magnetic. With accredited certificate according to EN ISO
Brinell Indenter	
EMNKW28E01Z	Standard 1 mm Brinell indenter. For machines M1/M4/M5/N3/N3/V4/V5/VR5C/DuraPro/DuraJet/DuraVision. Length 28 mm, dia. 6.5 mm with 1 mm ball pressed-in. With accredited certificate according to EN ISO
EMNKW28E02Z	Standard 2.5 mm Brinell indenter. For machines M1/M4/M5/N3/N4/V4/V5/VR5C/DuraPro/DuraJet/DuraVision. Length 28 mm, dia. 6.5 mm with 2.5 mm ball pressed-in. With accredited certificate according to EN ISO
EMNKW28E05Z	Standard 5 mm Brinell indenter. For machines M4/M5/N3/N4/V4/V5/VR5C/DuraPro/DuraJet/DuraVision. Length 28 mm, dia. 6.5 mm with 5 mm ball pressed-in. With accredited certificate according to EN ISO
EMNKW28E10Z	Standard 10 mm Brinell indenter. For machines M4/M5/V4/V5/VR5C/DuraPro/DuraVision. Length 28 mm, dia. 12 mm with 10 mm ball pressed-in. With accredited certificate according to EN ISO
Rockwell Indenter	
EMNDR28007Z	Standard Rockwell indenter for HRA/HRC/HRD & HR15/30/45N. For machines M1/M4/M5/N3/N4/V4/V5/VR5C/DuraPro/DuraJet/DuraVision. Length 28 mm, diameter 6.5 mm. With accredited certificate according to EN ISO
EMNKW28E16Z	Standard Rockwell indenter for HRB/HRF/HRG & HR15/30/45T. For machines M1/M4/M5/N3/N4/V4/V5/VR5C/DuraPro/DuraJet/DuraVision. Length 28 mm, dia. 6.5 mm with 1/16" ball pressed-in. With accredited certificate according to EN ISO
EMNKW28E16U	Length 28 mm, dia. 6.5 mm with 1/16" ball pressed-in
EMNKW28E18Z	Standard Rockwell indenter for HRE/HRH/HRK & HR15/30/45W. For machines M4/M5/N3/N4/V4/V5/VR5C/DuraPro/DuraJet/DuraVision.
EMNKW28E18U	Length 28 mm, dia. 6.5 mm with 1/8" ball pressed-in.
EMNKW28E14Z	Standard Rockwell indenter for HRL/HRM/HRP & HR15/30/45X. For machines M4/M5/N3/N4/V4/V5/VR5C/DuraPro/DuraJet/DuraVision. N.B. For DuraJet a special nose cone insert is required.
EMNKW28E14U	Length 28 mm, dia. 9 mm with 1/4" ball pressed-in.
EMNKW28E12Z	Standard Rockwell indenter for HRR/HRS/HRV & HR15/30/45Y. For machines M4/M5/N3/N4/V4/V5/VR5C/DuraPro/DuraJet/DuraVision. N.B. For DuraJet and N3/N4 a special nose cone is required.
EMNKW28E12U	Length 28 mm, dia. 15 mm with 1/2" ball pressed-in.

Accredited certificates are issued by MPA/DKD Germany according to EN ISO.
ASTM certificates on request. Further indenters on request.

Test Blocks

Brinell Test Block (heavy)

Brinell test block, test load ≥ 250 kgf. Includes a traceable laboratory certificate. For accredited certificate, add 05646961. For additional load calibration, add 05646965. N.B.: Please state test method and hardness of test block when ordering. (Will be supplied within ± 15 HB of the nominal value.)

05646951 Block Size: 150 mm x 125 mm x 16 mm

Brinell Test Block (light)

Brinell test block, test load ≤ 187.5 kgf. Includes a traceable laboratory certificate. For accredited certificate, add 05646960. For additional load calibration, add 05646966. N.B.: Please state test method and hardness of test block when ordering. (Will be supplied within ± 15 HB of the nominal value.)

05646952 Block Size: $\varnothing 64$ mm diameter x 15 mm

Vickers Test Block (micro)

Vickers test block (micro), $\leq HV1$. Includes a traceable laboratory certificate. For accredited certificate, add 05646962. For additional load calibration, add 05646967. N.B.: Please state test method and hardness of test block when ordering. (Will be supplied within ± 25 HV of the nominal value.)

05646953 Block Size: $\varnothing 30$ mm diameter x 10 mm

Vickers Test Block (macro)

Vickers test block (macro), $\geq HV2$. Includes a traceable laboratory certificate. For accredited certificate, add 05646962. For additional load calibration, add 05646968. N.B.: Please state test method and hardness of test block when ordering. (Will be supplied within ± 25 HV of the nominal value.)

05646954 Block Size: $\varnothing 64$ mm diameter x 15 mm

Rockwell Test Block

Includes a traceable laboratory certificate. For accredited certificate, add 05646959. For additional calibration, add 05646970. N.B.: Please state test method and hardness of test block when ordering. (Will be supplied within ± 2 HR (diamond indenter) or ± 4 HR (ball indenter) of the nominal value.)

05646955 Block Size: $\varnothing 64$ mm diameter x 15 mm

Knoop Test Block

Includes a traceable laboratory certificate. For accredited certificate, add 05646972. For additional load calibration, add 05646969. N.B.: Please state test method and hardness of test block when ordering. (Will be supplied within ± 25 HK of the nominal value.)

05646956 Block Size: $\varnothing 30$ mm diameter x 10 mm

Rockwell Test Block (carbide)

Includes a traceable laboratory certificate. For accredited certificate, add 05646964. N.B.: Please state test method and hardness of test block when ordering. (Will be supplied within ± 2 HRA of the nominal value.)

05646957 Block Size: 25 mm square x 6 mm

Vickers Test Block (carbide)

Includes a traceable laboratory certificate. For accredited certificate, add 05646963. N.B.: Please state test method and hardness of test block when ordering. Standard loads available: HV10, HV30. (Will be supplied within ± 25 HV of the nominal value.)

05646958 Block Size: 25 mm square x 6 mm

Accredited Certificate (Rockwell)

UKAS Certificate acc. to EN ISO 6508-3 AND ASTM E18. For HRL/M/P/R/S/V, 15/30/45W/X/Y: Only acc. to ASTM E18. Only in combination with Rockwell test block 05646955.

05646959

Accredited Certificate (Brinell light)

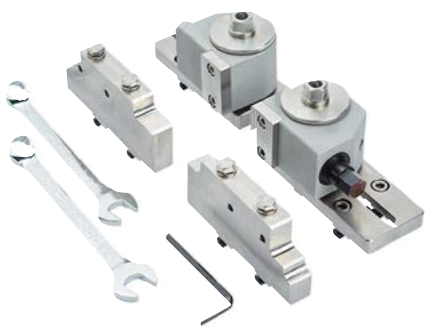
UKAS Certificate acc. to EN ISO 6506-3 AND ASTM E10. Only in combination with Brinell test block 05646952.

05646960





05646961	<p>Accredited Certificate (Brinell heavy) UKAS Certificate acc. to EN ISO 6506-3 AND ASTM E10. Only in combination with Brinell test block 05646951.</p>
05646962	<p>Accredited Certificate (Vickers) UKAS Certificate acc. to EN ISO 6507-3 AND ASTM E92. Only in combination with Vickers test block 05646953 or 05646954.</p>
05646972	<p>Accredited Certificate (Knoop) UKAS Certificate acc. to EN ISO 4545 AND ASTM E384. Only in combination with Knoop test block 05646956.</p>
05646963	<p>Accredited Certificate (Vickers carbide) UKAS Certificate acc. to EN ISO 6507-3 AND ASTM E92. Only in combination with Vickers carbide test block 05646958.</p>
05646964	<p>Accredited Certificate (Rockwell carbide) UKAS Certificate acc. to EN ISO 6508-3 AND ASTM E18. Only in combination with Rockwell carbide test block 05646957.</p>
05646965	<p>Additional Calibration (Brinell heavy) Additional UKAS Load Calibration, per individual test block. Only in combination with Brinell test block 05646951 AND accredited certificate 05646961. N.B.: Please state test method when ordering.</p>
05646966	<p>Additional Calibration (Brinell light) Additional UKAS Load Calibration, per individual test block. Only in combination with Brinell test block 05646952 AND accredited certificate 05646960. N.B.: Please state test method when ordering.</p>
05646967	<p>Additional Calibration (Vickers micro) Additional UKAS Load Calibration, per individual test block. Only in combination with Vickers test block 05646953 AND accredited certificate 05646962. N.B.: Please state test method when ordering.</p>
05646968	<p>Additional Calibration (Vickers macro) Additional UKAS Load Calibration, per individual test block. Only in combination with Vickers test block 05646954 AND accredited certificate 05646962. N.B.: Please state test method when ordering.</p>
05646969	<p>Additional Calibration (Knoop) Additional Load Calibration, per individual test block. Only in combination with Knoop test block 05646959. N.B.: Please state test method when ordering.</p>
05646970	<p>Additional Calibration (Rockwell) Additional UKAS Load Calibration, per individual test block. Only in combination with Rockwell test block 05646955 AND accredited certificate 05646959. N.B.: Please state test method when ordering.</p>
05646971	<p>Grid system for Brinell test block 10 x 10 mm alpha numerical square grid system for Brinell (heavy) test block 05646965.</p>



A variety of new Clamping Tools

Even the most well-built cut-off machine needs good clamping tools. Struers designs solid and easy-to-use clamping tools to meet any requirement. We offer an extensive programme of clamping tools to fit regularly as well as irregularly shaped workpieces. Choose the type and number of clamping tools that meets your specific requirements.

- Flexible and easy to use
- Fast clamping with Quick clamping tools
- Clamping of all shapes



Struers ApS
Pederstrupvej 84
DK-2750 Ballerup, Denmark

Phone +45 44 600 800
Fax +45 44 600 801
struers@struers.dk
www.struers.com

SINGAPORE
Struers Singapore
627A Aljunied Road,
#07-08 BizTech Centre
Singapore 389842
Phone +65 6299 2268
Fax +65 6299 2661
struers.sg@struers.dk

SPAIN
Struers España
Camino Cerro de los Gamos 1
Building 1 - Pozuelo de Alarcón
CP 28224 Madrid
Teléfono +34 917 901 204
Fax +34 917 901 112
struers.es@struers.es

SUOMI
Struers ApS, Suomi
Hietalahdenranta 13
00180 Helsinki
Puhelin +358 (0)207 919 430
Faksi +358 (0)207 919 431
finland@struers.fi

SWEDEN
Struers Sverige
Ekbacksvägen 22
168 69 Bromma
Telefon +46 (0)8 447 53 90
Telefax +46 (0)8 447 53 99
info@struers.se

UNITED KINGDOM
Struers Ltd.
Unit 11 Evolution @ AMP
Whittle Way, Catcliffe
Rotherham S60 5BL
Tel. +44 0845 604 6664
Fax +44 0845 604 6651
info@struers.co.uk

USA
Struers Inc.
24766 Detroit Road
Westlake, OH 44145-1598
Phone +1 440 871 0071
Fax +1 440 871 8188
info@struers.com

AUSTRALIA & NEW ZEALAND
Struers Australia
27 Mayneview Street
Milton QLD 4064
Australia
Phone +61 7 3512 9600
Fax +61 7 3369 8200
info.au@struers.dk

BELGIQUE (Wallonie)
Struers S.A.S.
370, rue du Marché Rollay
F- 94507 Champigny
sur Marne Cedex
Téléphone +33 1 5509 1430
Télécopie +33 1 5509 1449
struers@struers.fr

BELGIUM (Flanders)
Struers GmbH Nederland
Elektraweg 5
3144 CB Maassluis
Telefoon +31 (10) 599 7209
Fax +31 (10) 5997201
netherlands@struers.de

CANADA
Struers Ltd.
7275 West Credit Avenue
Mississauga, Ontario L5N 5M9
Phone +1 905-814-8855
Fax +1 905-814-1440
info@struers.com

CHINA
Struers Ltd.
No. 1696 Zhang Heng Road
Zhang Jiang Hi-Tech Park
Shanghai 201203, P.R. China
Phone +86 (21) 6035 3900
Fax +86 (21) 6035 3999
struers@struers.cn

CZECH REPUBLIC & SLOVAKIA
Struers GmbH Organizační složka
vědeckotechnický park
Přílepská 1920,
CZ-252 63 Roztoky u Prahy
Phone +420 233 312 625
Fax +420 233 312 640
czechrepublic@struers.de
slovakia@struers.de

DEUTSCHLAND
Struers GmbH
Carl-Friedrich-Benz-Straße 4
D-47877 Willich
Telefon +49 (0) 2154 486-0
Fax +49 (0) 2154 486-222
verkauf@struers.de

FRANCE
Struers S. A. S.
370, rue du Marché Rollay
F-94507 Champigny
sur Marne Cedex
Téléphone +33 1 5509 1430
Télécopie +33 1 5509 1449
struers@struers.fr

HUNGARY
Struers GmbH
Magyarországi Fióktelep
Tatai út 53
2821 Gyermely
Phone +36 (34) 880546
Fax +36 (34) 880547
hungary@struers.de

IRELAND
Struers Ltd.
Unit 11 Evolution @ AMP
Whittle Way, Catcliffe
Rotherham S60 5BL
Tel. +44 0845 604 6664
Fax +44 0845 604 6651
info@struers.co.uk

ITALY
Struers Italia
Via Monte Grappa 80/4
20020 Arese (MI)
Tel. +39-02/38236281
Fax +39-02/38236274
struers.it@struers.it

JAPAN
Marumoto Struers K.K.
Takara 3rd Building
18-6, Higashi Ueno 1-chome
Taïto-ku, Tokyo 110-0015
Phone +81 3 5688 2914
Fax +81 3 5688 2927
struers@struers.co.jp

NETHERLANDS
Struers GmbH Nederland
Zomerdijk 34 A
3143 CT Maassluis
Telefoon +31 (10) 599 7209
Telefax +31 (10) 5997201
netherlands@struers.de

NORWAY
Struers ApS, Norge
Sjøskogenveien 44C
1407 Vinterbro
Telefon +47 970 94 285
info@struers.no

ÖSTERREICH
Struers GmbH
Zweigniederlassung Österreich
Betriebsgebiet Puch Nord 8
5412 Puch
Telefon +43 6245 70567
Fax +43 6245 70567-78
austria@struers.de

POLAND
Struers Sp. z o.o.
Oddział w Polsce
ul. Jasnogórska 44
31-358 Kraków
Phone +48 12 661 20 60
Fax +48 12 626 01 46
poland@struers.de

ROMANIA
Struers GmbH, Sucursala Bucuresti
Str. Preciziei nr. 6R
062203 sector 6, Bucuresti
Phone +40 (31) 101 9548
Fax +40 (31) 101 9549
romania@struers.de

SCHWEIZ
Struers GmbH
Zweigniederlassung Schweiz
Weissenbrunnenstraße 41
CH-8903 Birmensdorf
Telefon +41 44 777 63 07
Fax +41 44 777 63 09
switzerland@struers.de

Ensuring Certainty

With offices and affiliates in 24 countries and a presence in more than 50 countries worldwide, Struers is the world's leading materialographic solution supplier. We are dedicated to enabling our customers to ensure certainty in all aspects of materialographic preparation and testing as well as material hardness testing - wherever they are in the world. Struers offers a complete range of equipment, consumables, service and training programmes - all supported by the most comprehensive knowledge base, global applications support and a certified global service set-up.

Learn more

Contact a Struers sales representative today or visit www.struers.com



e-Shop

Buy your consumables
in Struers e-Shop!
e-shop.struers.com