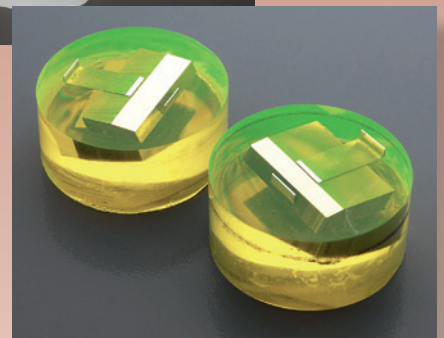


Cold Mounting Accessories



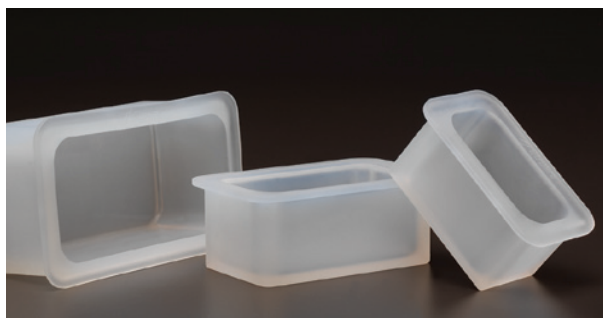
**Mounting cups,
dye, taper section angles
and other accessories
for cold mounting**



Many tools and accessories are used throughout the materialographic preparation process

Struers offers a wide variety of these tools, all developed with the main purpose of providing easier handling and more accurate specimen mounting

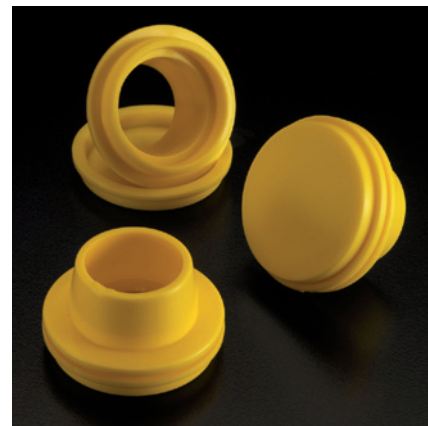
Mounting cups



FlexiForm for big rectangular specimens



FixiForm is a two part mounting cup designed with practical handles to be as user-friendly as possible.



FlangeForm, developed for use with AccuStop

FixiForm

FixiForm is a two part, a cylinder and a lid, mounting cup, designed to be as user-friendly as possible. It has practical handles for removing of the lid and the cylinder is a little conical for easy removal for the mounts. FixiForm is made of hard polypropylene which ensures that it can be re-used several times. The closing system is specially designed for optimal closeness also over time. The side is very smooth which make the sides of EpoFix, Specifix, CaldoFix-2 and ClaroCit mounts extremely clear.

FlexiForm, round

FlexiForm is for acrylic resins only and the best mounting cup for all Struers acrylic resins. The flexible silicone rubber makes it very easy to remove the mount from the mounting cup.

FlexiForm, rectangular

FlexiForm is made of very flexible silicone rubber which makes it very easy to remove the mounts. The inner sides are polished, so the sides of the mounts get clear. The sides are also straight which

makes it easier to fasten the mounts in a specimen holder.

FlexiForm are especially suitable to be used with acrylic cold mounting resins (ClaroCit, DuroCit and VersoCit) where they can be reused many times. It can also be used with epoxy resins.

SeriForm

This polypropylene mounting cup has two parts, which gives the mounted specimen straight parallel sides. Parallel sides are necessary when AccuStop is used or to avoid the tilting of the mount when it is clamped into a specimen holder. SeriForm is recommended especially for Struers acrylic resins.

FlangeForm

Mounting cup for specimens mounted with a flange. FlangeForm is developed especially for use with the specimen holder AccuStop for controlled material

removal of e.g. PCBs. The specimen is mounted in the FlangeForm and afterwards inserted into the AccuStop.

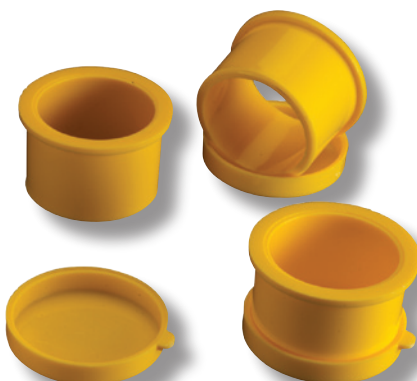
ViaMount

ViaMount is a part of the ViaKit toolbox for high-precision preparation of PCB coupons. ViaMount consists of a stainless steel ring with a special lining for easy unmounting, and a tear-off end cap that is removed after curing.

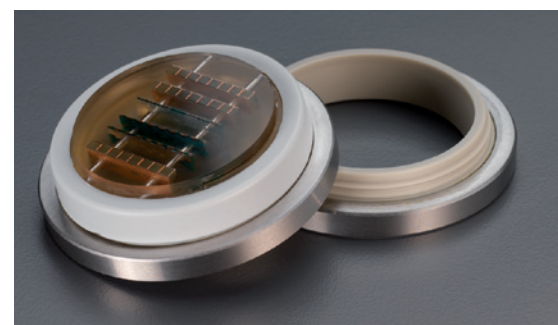
See separate ViaSampling System brochure for further details.



FlexiForm, the best choice for acrylic resins

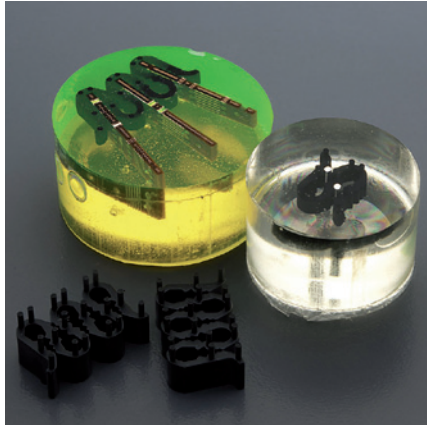


SeriForm, recommended for acrylic resins



ViaMount, a part of the ViaKit toolbox

Fixation clips



Struers MultiClips in plastic



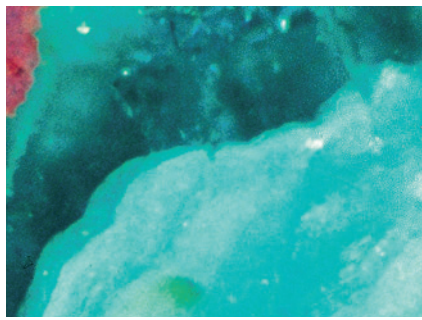
Struers metal spring clips

A number of fixation clips are available to support or hold small, thin specimens during mounting. Struers MultiClips in plastic can support up to 5 specimens at a time. Struers metal spring clips are available in 6 mm and 9 mm.

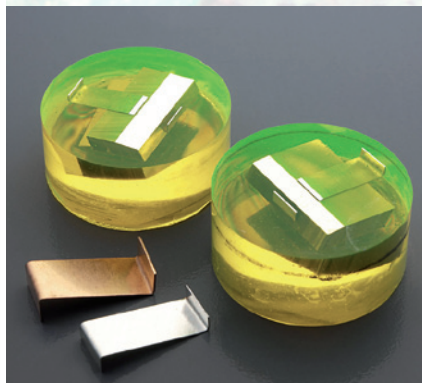
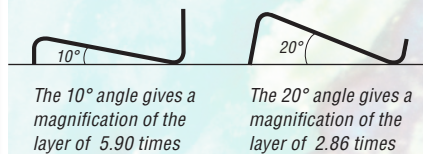
Taper Section Angles

It is much easier to measure the thickness of thin layers by making a Taper Section. By mounting the specimen tilted, the layer will be magnified and therefore the thickness measurement will be easier and more accurate. Struers offers a Taper Section Angle for this purpose.

The angle is available in three different materials: Steel, aluminium and copper.



The angle is formed like an "N" with two different heights in "upright" position. This provides the possibility of two different magnifications, depending on which way the angle is turned.



Taper Section Angles makes it much easier to measure the thickness of thin layers

Mound Insert

For 90° positioning of a specimen in ø40 mm mould.

Protection

The prepared specimen or mount can be protected either by a plastic Protecting cap or by spraying Protecting Lacquer over the surface. The Protecting Lacquer can be removed with acetone without damaging the specimen.



Protecting caps for protecting of specimens/mounts

Mould insert 40 mm fully mounted and partially mounted



Measuring and mixing



Accessories for mixing from Struers

When using epoxies, the correct mixing ratio is essential to the result and Struers therefore recommends to measure by weight. To measure by volume use the syringes delivered with the epoxy sets. For precise measuring, when working with acrylic resins, we recommend to measure by weight, but the spoons delivered with the resins may be used for fast measuring.

Struers propylene mixing cups are suitable for mixing of all resins. They neither melt nor will the resin seep through the cup.

Electric mixer

For optimal mixing of cold mounting epoxies, mixing for approx. 3-5 minutes is required. Struers small electric mixer ensures easy and quick mixture of the components. The mixer has disposable propellers, so no tedious cleaning is required. The mixer has 2500 rpm, giving a quick mixing of the components and at the same time avoiding air bubbles in the mixture.



Struers electric mixer ensures easy and quick mixing

Dyes

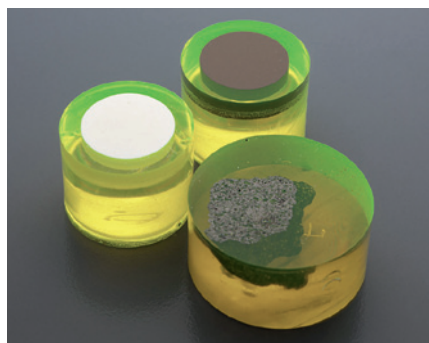
- colour your mounts for easy identification



Add colour to your mounts for easy identification with Struers' AcryDye for colouring of acrylic cold mounting resins.

In some cases it can be difficult to distinguish pores and cracks from the base material. With Struers' fluorescent dye, EpoDye, mixed into the mounting resin, you can easily identify pores and cracks when examining the specimen.

In order to get the best results from EpoDye it is necessary to have two filters in the microscope: One filter (400-440 nm) located between the light source and the specimen, and another filter (above 520 nm) located between the specimen and the eye piece. Please contact your microscope supplier to get the right filter combinations.



Struers fluorescent dye makes it easy to identify pores and cracks

CitoVac

- vacuum unit for mounting and impregnating porous specimens



Using CitoVac will fill all pores connected to the surface with resin. This reinforces fragile materials, and prevents pull-outs and cracks during preparation

CitoVac is a vacuum impregnation unit, especially designed for mounting and impregnation of porous materials. For perfect impregnation of porous materials it is important that mounting cup and specimen are first evacuated, then the resin is poured, and then the atmospheric air pressure is allowed to press the resin into the pores and cracks. It is recommended to vacuum impregnate porous materials, such as ceramics or spray coatings.

Only epoxy resins can be used for vacuum impregnation due to their low viscosity and their low vapour pressure. EpoDye can be mixed with epoxy to allow easy identification of all filled pores.

See separate CitoVac brochure for further details.

Wupty

- tool for pressing mounts out of FixiForm



The mount is pressed carefully out of FixiForm

Using Wupty, the mount is pressed carefully out of FixiForm and the lifetime of the mounting cup is thus increased. No rough treatment of the mounting cups is necessary to remove the mounts!

Wupty can only be used with FixiForm, as the handles are used to secure it while pressing the mount out. Other mounting cups only have small flanges which are not big enough to hold the cup while pressing the mount out.

Drybox

- drying and curing oven

By circulating a constant stream of temperate air, Drybox can act as a drier for specimens or specimen holders as well as a curing oven for cold mounting.

To achieve uniform mounting results Drybox can be used to control the temperature during the curing process.



Struers Drybox controls the temperature during the curing process and optimizes your mounting results

Specifications

			Contents	Cat. no.
Mounting cups	FixiForm Two part mounting polypropylene (PP) cup to be used with all Struers cold mounting resins. Can be re-used several times.	25 mm / 1" dia. 30 mm dia. 40 mm dia. 50 mm / 2" dia. 1¼" dia. 1½" dia.	10 pcs. 10 pcs. 10 pcs. 10 pcs. 10 pcs. 10 pcs.	40300085 40300086 40300089 40300090 40300087 40300088
	FlexiForm Flexible silicone rubber mounting cups for acrylic cold mounting resins	25 mm dia. 30 mm dia. 40 mm dia. 1¼" dia. 1½" dia.	5 pcs. 5 pcs. 5 pcs. 5 pcs. 5 pcs.	40300018 40300019 40300022 40300020 40300021
	FlexiForm Translucent silicone rubber mounting cup for mounting of rectangular specimens. To be used with acrylic cold mounting resins where they can be reused many times. Epoxies reduces the lifetime as the resin over time affects the silicone rubber.	68 x 37 x 35 mm, fits to specimen holder MAXDI, 02606920 90 x 50 x 35 mm, fits to specimen holder MAXOT, 02606922 120 x 60 x 45 mm	3 pcs. 3 pcs. 2 pcs.	40300082 40300083 40300084
	SeriForm Polypropylene mounting cups for acrylic and polyester cold mounting resins	25 mm dia. 30 mm dia. 40 mm dia.	10 pcs. 10 pcs. 5 pcs.	40300007 40300008 40300009
	FlangeForm Mounting cups with flange for AccuStop	30 mm dia. 40 mm dia.	Set of 3 Set of 3	40300012 40300014
Fixation clips	MultiClips Multiple plastic clip for holding up to 5 small and thin specimens when mounting		50 pcs.	40300027
	Metal spring clips For holding small and thin specimens when mounting	6 mm dia. 9 mm dia.	100 pcs. 100 pcs.	40300026 40300025
	Taper Section Angle	Aluminium Copper Steel	50 pcs. 50 pcs. 50 pcs.	40300070 40300071 40300069
	Mould Insert	Mould insert for use with 40 mm dia. mounting cups Max specimen size 35 x 20 mm	50 pcs.	05756912
Measuring and Mixing	Cold mounting Consumables Kit	400 mixing cups, 400 stirrers		40300032
	Consumables Kit for CitoVac	100 dispensing tubes and one chamber protector		40300080
	Epovac Consumables Kit	80 mixing cups, 80 stirrers, 80 tubes, 2 rubber plugs		40300030
	Disposable syringes	5 ml 10 ml 20 ml	100 pcs. 100 pcs. 100 pcs.	40300047 40300048 40300049
	Electric mixer for mixing of epoxy	1 mixer, 1 disposable propeller		05696101
	Disposable propeller		20 pcs.	40300072
	Silicon oil, release agent		100 ml	40300076
Dyes	EpoDye		20 g	40300002
	AcryDye	Blue, red and yellow dye	3 x 20 ml	40300081
Protection	Protecting caps Plastic cap for cylindrical specimen/ mount	For 25 mm dia. specimens/mounts For 30 mm dia. specimens/mounts For 40 mm dia. specimens/mounts For 50 mm dia. specimens/mounts	100 pcs. 100 pcs. 100 pcs. 100 pcs.	49900033 49900034 49900035 49900036
	Protecting Lacquer	In spray can	400 ml	49900012
CitoVac	CitoVac with built-in vacuum ejector. Vacuum impregnation unit. Compressed air supply. 4.5-6 bar required.	1 x 100–240 V / 50-60Hz		05926119
	CitoVac for external pump. Vacuum impregnation unit. External vacuum pump required.	1 x 100–240 V / 50-60Hz		05926219
Wupty	Tool for pressing mounts out of FixiForm			05696901
Drybox-2	Combined specimen drier and curing oven with adjustable temperature (approx. 40-90°C) and low noise fan. With basket for specimens (04236904) and slot for specimen holders	1 x 110-120 V / 50-60 Hz 1 x 220 V / 50 Hz 1 x 220 V / 60 Hz		03706118 03706133 03706134



Struers A/S
Pederstrupvej 84
DK-2750 Ballerup, Denmark
Phone +45 44 600 800
Fax +45 44 600 801
struers@struers.dk
www.struers.com

AUSTRALIA & NEW ZEALAND

Struers Australia
27 Mayneview Street
Milton QLD 4064
Australia
Phone: +61 7 3512 9600
Fax: +61 7 3369 8200
info.au@struers.dk

BELGIQUE (Wallonie)

Struers S.A.S.
370, rue du Marché Rollay
F- 94507 Champigny
sur Marne Cedex
Téléphone +33 1 5509 1430
Télécopie +33 1 5509 1449
struers@struers.fr

BELGIUM (Flanders)

Struers GmbH Nederland
Elektraweg 5
3144 CB Maassluis
Telefoon: +31 (10) 599 7209
Fax: +31 (10) 5997201
netherlands@struers.de

CANADA

Struers Ltd.
7275 West Credit Avenue
Mississauga, Ontario L5N 5M9
Phone +1 905-814-8855
Fax +1 905-814-1440
info@struers.com

CHINA

Struers Ltd.
No. 1696 Zhang Heng Road
Zhang Jiang Hi-Tech Park
Shanghai 201203, P.R. China
Phone +86 (21) 6035 3900
Fax +86 (21) 6035 3999
struers@struers.cn

CZECH REPUBLIC

Struers GmbH
Organizační složka
Havlíčková 361
CZ-252 63 Roztoky u Prahy
Phone +420 233 312 625
Fax: +420 233 312 640
czechrepublic@struers.de

DEUTSCHLAND

Struers GmbH
Carl-Friedrich-Benz-Straße 5
D-47877 Willich
Telefon +49 (0) 2154 486-0
Fax +49 (0) 2154 486-222
verkauf@struers.de

FRANCE

Struers S.A.S.
370, rue du Marché Rollay
F-94507 Champigny
sur Marne Cedex
Téléphone +33 1 5509 1430
Télécopie +33 1 5509 1449
struers@struers.fr

IRELAND

Struers Ltd.
Unit 11 Evolution@ AMP
Whittle Way, Catcliffe
Rotherham S60 5BL
Tel: +44 0845 604 6664
Fax: +44 0845 604 6651
info@struers.co.uk

ITALY

Struers Italia
Via Monte Grappa 80/4
20020 Arese (MI)
Tel. +39-02/38236281
Fax +39-02/38236274
struers.it@struers.it

JAPAN

Marumoto Struers K.K.
Takara 3rd Building
18-6, Higashi Ueno 1-chome
Taito-ku, Tokyo 110-0015
Phone +81 3 5688 2914
Fax +81 3 5688 2927
struers@struers.co.jp

NETHERLANDS

Struers GmbH Nederland
Elektraweg 5
3144 CB Maassluis
Telefoon: +31 (10) 599 7209
Fax: +31 (10) 5997201
netherlands@struers.de

ÖSTERREICH

Struers GmbH
Zweigniederlassung Österreich
Betriebsgebiet Puch Nord 8
5412 Puch
Telefon: +43 6245 70567
Fax: +43 6245 70567-78
austria@struers.de

POLAND

Struers Sp. z o.o.
Oddział w Polsce
ul. Jasnogórska 44
31-358 Kraków
Phone +48 12 661 20 60
Fax +48 12 626 01 46
poland@struers.de

ROMANIA

Struers GmbH
Sucursala Sibiu
Str.Scoala de Inot, nr. 18
RO-550005 Sibiu
Phone +40 269 244 558
Fax +40 269 244 559
romania@struers.de

SCHWEIZ

Struers GmbH
Zweigniederlassung Schweiz
Weissenbrunnenstraße 41
CH-8903 Birmensdorf
Telefon +41 44 777 63 07
Fax +41 44 777 63 09
switzerland@struers.de

SINGAPORE

Struers Singapore
627A Aljunied Road,
#07-08 BizTech Centre
Singapore 389842
Phone +65 6299 2268
Fax +65 6299 2661
struers.sg@struers.dk

SUOMI

Struers Suomi
Kalevankatu 43
00180 Helsinki
Puhelin +358 (0)207 919 430
Faksi +358 (0)207 919 431
finland@struers.fi

SWEDEN

Struers Sverige
Ekbacksvägen 22
168 69 Bromma
Tel. +46 (0)8 447 53 90
Fax +46 (0)8 447 53 99
info@struers.se

UNITED KINGDOM

Struers Ltd.
Unit 11 Evolution @ AMP
Whittle Way, Catcliffe
Rotherham S60 5BL
Tel: +44 0845 604 6664
Fax: +44 0845 604 6651
info@struers.co.uk

USA

Struers Inc.
24766 Detroit Road
Westlake, OH 44145-1598
Phone +1 440 871 0071
Fax +1 440 871 8188
info@struers.com

Struers' products are subject to constant product development. Therefore, we reserve the right to introduce changes in our products without notice.